

**Title:** Thermodilution-Derived Temperature Recovery Time, a Novel Predictor of Microvascular Reperfusion and Prognosis After Myocardial Infarction.

**Authors:** Annette M. Maznyczka, MBChB(Hons); David Carrick, PhD; Keith G. Oldroyd, M.D(Hons); Greg James-Rae, MRes; Peter McCartney, MBChB; John P. Greenwood, PhD; Richard Good, M.D; Margaret McEntegart, PhD; Hany Eteiba, M.D; Mitchell Lindsay, M.D; James M. Cotton, M.D; Mark C. Petrie, MBChB; Colin Berry, PhD

**DOI:** 10.4244/EIJ-D-19-00904

**Citation:** Maznyczka AM, Carrick D, Oldroyd KG, James-Rae G, McCartney P, Greenwood JP, Good R, McEntegart M, Eteiba H, Lindsay M, Cotton JM, Petrie MC, Berry C. Thermodilution-Derived Temperature Recovery Time, a Novel Predictor of Microvascular Reperfusion and Prognosis After Myocardial Infarction. *EuroIntervention* 2020; Jaa-743 2020, doi: 10.4244/EIJ-D-19-00904

**Manuscript submission date:** 29 September 2020

**Revisions received:** 13 January 2020

**Accepted date:** 27 February 2020

**Online publication date:** 03 March 2020

**Disclaimer:** This is a PDF file of a "Just accepted article". This PDF has been published online early without copy editing/typesetting as a service to the Journal's readership (having early access to this data). Copy editing/typesetting will commence shortly. Unforeseen errors may arise during the proofing process and as such Europa Digital & Publishing exercise their legal rights concerning these potential circumstances.

# **Thermodilution-Derived Temperature Recovery Time, a Novel Predictor of Microvascular Reperfusion and Prognosis After Myocardial Infarction**

## **Short Title: Novel Microvascular Reperfusion Parameter Post-MI**

Annette M. Maznyczka<sup>1,2</sup> MBChB(Hons), David Carrick<sup>2</sup> PhD, Keith G. Oldroyd<sup>1,2</sup> MD(Hons), Greg James-Rae<sup>3</sup> MRes, Peter McCartney<sup>1,2</sup> MBChB, John P. Greenwood<sup>4</sup> PhD, Richard Good<sup>2</sup> MD, Margaret McEntegart<sup>2</sup> PhD, Hany Eteiba<sup>2</sup> MD, Mitchell Lindsay<sup>2</sup> MD, James M. Cotton<sup>5</sup> MD, Mark C. Petrie<sup>1,2</sup> MBChB, Colin Berry<sup>1,2</sup> PhD

**Institutions:** <sup>1</sup> BHF Glasgow Cardiovascular Research Centre, Institute of Cardiovascular and Medical Sciences, University of Glasgow, U.K.; <sup>2</sup> West of Scotland Heart and Lung Centre, Golden Jubilee National Hospital, Glasgow, U.K.; <sup>3</sup> Robertson Centre for Biostatistics, University of Glasgow, U.K. <sup>4</sup> Leeds University and Leeds Teaching Hospital NHS Trust, U.K.; <sup>5</sup> Wolverhampton University Hospital NHS Trust, U.K.

**Correspondence:** Professor Colin Berry, BHF Glasgow Cardiovascular Research Centre Institute of Cardiovascular and Medical Sciences, 126 University Place, University of Glasgow, G12 8TA, Scotland, UK. E.mail: [colin.berry@glasgow.ac.uk](mailto:colin.berry@glasgow.ac.uk); Telephone: 01413303325.

**Portrait of first author:**



Copyright EuroIntervention

## ABSTRACT

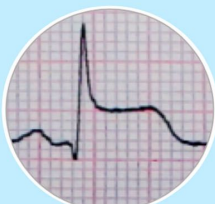
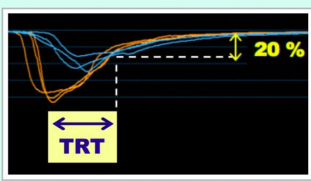

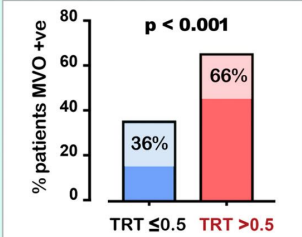
**Aims:** Novel parameters that detect failed microvascular reperfusion might better identify the patients likely to benefit from adjunctive treatments during primary percutaneous coronary intervention (PCI). We hypothesised that a novel invasive parameter, the thermodilution-derived temperature recovery time (TRT), would be associated with microvascular obstruction (MVO) and prognosis.

**Methods and Results:** TRT was derived and validated in two independent ST-elevation myocardial infarction populations and was measured immediately post-PCI. TRT was defined as the duration (seconds) from the nadir of the hyperaemic thermodilution curve to 20% from baseline body temperature. MVO extent (% left ventricular mass) was assessed by cardiovascular magnetic resonance imaging at 2-7 days. In the retrospective derivation cohort (n=271, mean age 60±12 years, 72% male), higher TRT was associated with more MVO (coefficient: 4.24 [95% CI: 2.26-6.22] p<0.001), independently of IMR>32, CFR≤2, hyperaemic Tmn>median, thermodilution waveform, age and ischaemic time. At 5-years, higher TRT was multivariably associated with all-cause death/ heart failure hospitalisation (OR: 4.14 [95% CI: 2.08-8.25] p<0.001) and major adverse cardiac events (OR: 4.05 [95% CI: 2.00-8.21] p<0.001). In the validation population (n=144, mean age 60±11 years, 80% male), the findings were confirmed prospectively.

**Conclusions:** TRT represents a novel diagnostic advance for predicting MVO and prognosis.

**ClinicalTrials.gov Identifiers:** NCT02072850 & NCT02257294

## Thermodilution-Derived Temperature Recovery Time (TRT): a Novel Predictor of Microvascular Reperfusion & Prognosis After STEMI

Population	Coronary Physiology	Follow up	Main Results
<p>Acute STEMI</p>  <p>Retrospective derivation: <b>271 patients</b> Prospective validation: <b>144 patients</b></p>	<p>Post-PCI</p>  <p>TRT = duration (secs) from nadir of hyperaemic thermodilution curve to 20% from baseline temperature</p>	<p>CMR 2-7 days later</p>  <p>Follow up for clinical outcomes: Derivation cohort at 5 yrs Validation cohort at 1 yr</p>	<p>↑ TRT predicts MVO</p>  <p>↑ TRT predicts all-cause death or heart failure hospitalisation, &amp; MACE</p>
<p>CMR, cardiovascular magnetic resonance; MACE, major adverse cardiac events; MVO, microvascular obstruction; PCI, percutaneous coronary intervention; STEMI, ST-segment elevation myocardial infarction</p>			

### CONDENSED ABSTRACT

We developed a novel parameter, the thermodilution-derived temperature recovery time (TRT), to measure failed microcirculatory reperfusion. TRT was derived and validated in two independent acute STEMI populations (n=271 and n=144). Higher TRT was multivariably associated with more MVO, 5-year all-cause death/ heart failure hospitalisation and MACE. TRT represents a novel diagnostic advance for detecting failed microcirculatory reperfusion, which has potential to refine risk stratification. Further research is needed to evaluate the potential clinical utility of TRT-guided selection of patients for adjunctive treatments during primary PCI.

**KEYWORDS:** MRI, STEMI

## ABBREVIATIONS

AUC= area-under-the-curve

CFR=coronary flow reserve

CI=confidence interval

CMR=cardiovascular magnetic resonance

IMR=index of microcirculatory resistance

IQR=interquartile range

LV=left ventricular

OR=odds ratio

Pa=aortic pressure

Pd=distal coronary pressure

PCI=percutaneous coronary intervention

ROC=receiver operating characteristic

SD=standard deviation

STEMI=ST-segment elevation myocardial infarction

T<sub>mn</sub>=mean transit time

TRT=temperature recovery time

## INTRODUCTION

Microvascular obstruction (MVO), reflects failed myocardial reperfusion following acute ST-segment elevation myocardial infarction (STEMI). Despite routinely restoring epicardial coronary patency with primary percutaneous coronary intervention (PCI), MVO affects about half of patients and impairs prognosis[1]. There are no evidence-based treatments for MVO. Novel parameters that accurately measure failed microvascular reperfusion, and provide prognostic information incremental to clinical indices, have potential to refine clinical trial design. Stratified medicine is the identification of patient subgroups that are distinguishable from a heterogeneous population by disease severity and potential response to treatments during primary PCI[2].

The index of microcirculatory resistance (IMR) is a validated measure of the immediate efficacy of microcirculatory reperfusion[3]. Higher IMR values indicate greater degrees of microvascular dysfunction. An  $IMR \geq 32$ , or  $>40$  predicts all-cause death or heart failure hospitalisations[4]. An  $IMR > 32$  also predicts worse recovery of left ventricular (LV) function post-STEMI[5] and is being used to select patients for clinical trials (RESTORE-MI [ACTRN12618000778280]). However, there are limitations for clinical translation, e.g. when calculating IMR the clinician should verify that the software has correctly positioned the distal coronary pressure (Pd) marker at the lowest stable Pd divided by mean aortic pressure (Pa) in hyperaemia (Pd/Pa)[2]. Second, manual saline injection can be a source of variability[2]. This variability can be reduced by thermodilution-based absolute flow and resistance measurement, using continuous saline infusion through a dedicated coronary catheter[6].

Coronary flow reserve (CFR)[7] and bimodal thermodilution waveforms[8] have also been associated with MVO and clinical outcomes. However, due to variations in resting flow, CFR has limited reproducibility[3]. The potential of bimodal waveform for clinical translation

is limited by requiring off-line processing for waveform classification, and if used alone bimodal waveform may miss some high-risk patients[2].

We theorised that the later part of the thermodilution curve might be less susceptible to variability in the speed of manual intracoronary saline injections. We conceived and evaluated a novel parameter, termed temperature recovery time (TRT). TRT is the time taken (seconds) for temperature recorded at the distal wire sensor to recover from the nadir value to baseline body temperature, during maximal hyperaemia. We hypothesised that TRT would be associated with the amount of MVO and clinical outcomes.

## METHODS

### Population

TRT was derived from a retrospective cohort of 288 consecutive all-comer acute STEMI patients, who underwent emergency PCI, from a single centre (2011-2012) (MR-MI Study; NCT0207850)[9] (Supplementary Figure 1).

Validation of TRT was performed prospectively in patients from the physiology sub-study of the T-TIME trial (NCT02257294)[10]. From 2016-2017, 144 patients with acute STEMI, from 3 U.K. hospitals, were randomised to intracoronary alteplase (10mg or 20mg) or placebo, infused into the culprit artery pre-stenting. Eligibility criteria are in the Supplement.

The studies were approved by the National Research Ethics Service (13-WS-0119 and 10-S0703-28) and complied with the Declaration of Helsinki.

### Invasive Coronary Physiology

IMR ( $P_d \times T_{mn}$  during hyperaemia[3]), CFR (resting  $T_{mn} \div$  hyperaemic  $T_{mn}$ [7]) and TRT were measured post-PCI, using a pressure- and temperature-sensing guidewire (Abbott



Vascular, Temecula, California, U.S.A), using standard thermodilution methodology (Supplement). The shapes of hyperaemic thermodilution curves were assessed, as narrow unimodal, wide unimodal, or bimodal[8] (Supplement).

TRT was defined as the duration (seconds) from the nadir of the hyperaemic thermodilution curve to 20% from baseline temperature. The optimal threshold (20%) for the end of the TRT measurement was chosen after comparison of five percentage thresholds, (i.e. 7.5%, 10%, 20%, 30% and 60%), from the first 100 consecutive patients in the derivation cohort. The percentage threshold that gave the highest area-under-the-curve (AUC) for predicting MVO on receiver operating characteristic (ROC) curve analysis was used to define TRT (Supplementary Figure 2). If the time when the temperature returns exactly to baseline is used then the TRT parameter becomes sensitive to small errors in the measurement. The mean TRT (from triplicate measurements) was calculated using an automated algorithm using dedicated software (Coroventis™, Uppsala, Sweden). In the derivation cohort, TRT was calculated retrospectively. In the validation cohort, coronary physiology parameters were calculated prospectively and were submitted to the data coordination centre prior to database lock.

### **Angiogram and Electrocardiogram Analyses**

Percentage ST-segment resolution on electrocardiograms (ECGs) obtained 60 minutes post-reperfusion compared to pre-reperfusion was calculated. Angiographic analyses included: TIMI (Thrombolysis in Myocardial Infarction) coronary flow grade, corrected TIMI frame count and myocardial perfusion grade (Supplement).

## Cardiovascular Magnetic Resonance

CMR imaging was performed at 1.5-Tesla. MVO extent (% LV mass) was demonstrated by late gadolinium enhancement imaging, at 2-7 days post-PCI. The CMR protocols in these studies were similar and have previously been described[9, 10].

## Clinical Outcomes

The clinical outcomes were: (i) all-cause death or hospitalisation for heart failure after the initial acute STEMI, and (ii) major adverse cardiac events (MACE), defined as cardiac death, non-fatal MI, or heart failure hospitalisation. Clinical outcomes were independently assessed by physicians who were blinded to the other data. Clinical follow up was completed for all patients.

## Statistics

Associations with MVO extent were assessed with linear regression, and the regression coefficients represented mean change in MVO extent for a 1-unit increase in TRT.

Association with MVO presence, or clinical outcomes were evaluated using odds ratios (ORs), from logistic regression. The associations with MVO were adjusted for: age, ischaemic time,  $CFR \leq 2$ ,  $IMR > 32$ , hyperaemic  $Tmn > median$  and thermodilution waveform (bimodal or wide unimodal vs. narrow unimodal). There was *a priori* concern that these covariates were clinically relevant confounders. Receiver operating characteristic (ROC) curve comparisons were made using the DeLong method. Further details of the statistical methods are in the Supplement.

## RESULTS

The flow of patients through the study is shown (Supplementary Figure 1). The findings were broadly the same when  $IMR > 32$  was substituted for  $IMR > 40$  in multivariable regression analyses (Supplementary Tables 1 to 3).

### Population Characteristics

#### *Derivation Population*

Seventeen patients were excluded from the derivation cohort, because coronary physiology recordings were unsuitable for digital analysis. Among the 271 included patients (mean age  $60 \pm 12$  years, 72% male) (Tables 1 and 2), most (92%) underwent primary PCI, whilst 7 had PCI after successful thrombolysis, and 14 had PCI after failed thrombolysis.

TRT (median: 0.5; range: 0.1-2.5) had a right-skewed distribution (Supplementary Figure 3). TRT correlated with IMR ( $r=0.8$ ,  $p<0.001$ ), CFR ( $r=-0.3$ ,  $p<0.001$ ) and with hyperaemic Tmn ( $r=0.9$ ,  $p<0.001$ ). Baseline and procedural characteristics associated with higher TRT, in multivariable linear regression analysis, were:  $IMR > 32$  ( $p<0.001$ ), hyperaemic Tmn  $>$  median ( $p<0.001$ ),  $CFR \leq 2$  ( $p<0.001$ ), bimodal or wide unimodal thermodilution waveform ( $p=0.018$ ), TIMI coronary flow grade post-PCI  $\leq 2$  ( $p<0.001$ ), and higher creatinine ( $p=0.044$ ).

#### *Validation Population*

The median TRT in the validation population ( $n=144$ ) was 0.5 (range: 0.2-2.4). Baseline and procedural characteristics (Supplementary Tables 4 and 5) associated with higher TRT, in multivariable linear regression analysis, were bimodal or wide unimodal thermodilution waveform, higher final TIMI frame count and hyperaemic Tmn  $>$  median (all  $p<0.001$ ).

### Associations of TRT with MVO

#### *Derivation Population*

In the derivation population, MVO was present in 137 patients (51%). In ROC curve analysis there was no difference in the discriminatory ability of TRT compared to IMR for predicting MVO presence (Figure 1). The TRT cut-off with the highest combination of sensitivity (61%) and specificity (69%) for predicting MVO presence was  $>0.5$ . Case examples are shown (Supplementary Figure 4).

TRT dichotomised by 0.5 correctly predicted MVO presence, or absence, in 64.9% (n=176/271) of patients. IMR dichotomised by 32 correctly predicted MVO presence, or absence, in 62.0% (n=168/271) of patients. There was no difference in the predictive accuracy for detecting MVO presence/ absence, when TRT and IMR dichotomised by 0.5 and 32 respectively were compared, using the McNemar test (difference 2.95% [95% confidence interval [CI] -2.35%, 8.26%]  $p=0.341$ ). Figure 2 shows discordance between IMR and TRT.

Continuous TRT was multivariably associated with MVO extent (coefficient: 4.24 [95% CI: 2.26-6.22]  $p<0.001$ ), i.e. MVO extent increased by 4.24 units for every 1-unit increase in TRT. Continuous TRT was also multivariably associated with MVO presence (OR: 5.26 [95% CI: 2.36-11.74]  $p<0.001$ ). The performance of  $TRT>0.5$  for predicting MVO is shown in Table 3.

### ***Validation Population***

In the validation population, continuous TRT was multivariably associated with MVO extent (Coefficient: 2.86 [95% CI: 1.26-4.46]  $p=0.001$ ).

### **Prognostic Significance of TRT**

#### ***Derivation Population***

During the initial 30 days post-STEMI, all-cause death/ heart failure hospitalisation occurred in 22 patients (8%), and MACE occurred in 24 patients (9%). ROC analysis showed that TRT had superior discriminatory ability compared to CFR for predicting 30-day clinical

outcomes (Figure 1). TRT was multivariably associated with 30-day clinical outcomes, independent of IMR (Table 3).

During a median follow-up of 5-years, 52 patients died or experienced heart failure hospitalisation, and 43 patients experienced MACE. ROC analysis demonstrated that TRT had superior discriminatory ability compared to CFR for predicting 5-year MACE (Figure 1). TRT was multivariably associated with 5-year clinical outcomes (Table 3).

### ***Validation Population***

During 1-year follow-up in the validation population, all-cause death/ heart failure hospitalisation occurred in 22 patients (15%), and MACE occurred in 23 patients (16%). Continuous TRT was multivariably associated with all-cause death/ heart failure hospitalisations (OR: 6.10 [95% CI: 2.42-15.42]  $p<0.001$ ), and MACE (OR: 7.65 [95% CI: 1.87-31.29]  $p=0.005$ ), independent of  $IMR>32$ ,  $CFR\leq 2$ , hyperaemic Tmn>median and thermodilution waveform. The results were similar when  $IMR>32$  was substituted for  $IMR>40$  in the multivariable model (all-cause death/ heart failure hospitalisation: OR 5.85 (95% CI 1.43-23.94)  $p=0.014$ , and MACE: OR 5.84 (95% CI 1.44-23.76)  $p=0.014$ ).

### **Repeatability of TRT and Associations with Haemodynamics**

Paired TRT measurements, obtained 0.5-8 minutes apart, post-primary PCI by 4 cardiologists in 13 patients were correlated ( $r=0.93$ ,  $p<0.001$ ), with a mean difference between duplicate TRT measurements of  $0.02\pm 0.08$  ( $p=0.489$ ). The coefficient of variation from duplicate TRT measurements was 12.7%. The Bland-Altman plot is shown in Supplementary Figure 5. The coefficient of variation from duplicate IMR measurements was 15.5%.

Relationships between TRT, IMR, CFR, or hyperaemic Tmn with haemodynamic parameters were examined in the derivation cohort, because predictive performance may be impaired if influenced by haemodynamic conditions. Pd did not correlate with TRT ( $r=-0.04$ ,

$p=0.543$ ), or hyperaemic Tmn ( $r=-0.01$ ,  $p=0.883$ ). However, Pd was correlated with IMR ( $r=0.3$ ,  $p<0.001$ ) and CFR ( $r=0.2$ ,  $p=0.014$ ). Pa did not correlate with TRT ( $r=-0.1$ ,  $p=0.311$ ), or hyperaemic Tmn ( $r=-0.05$ ,  $p=0.506$ ). However, Pa was correlated with IMR ( $r=0.2$ ,  $p=0.001$ ) and CFR ( $r=0.2$ ,  $p=0.011$ ).

Neither TRT, IMR, nor hyperaemic Tmn were correlated with heart rate, but CFR was (TRT,  $r=-0.1$ ,  $p=0.399$ ; IMR,  $r=0.01$ ,  $p=0.926$ ; hyperaemic Tmn,  $r=-0.03$ ,  $p=0.615$ ; CFR,  $r=-0.13$ ,  $p=0.030$ ).

## DISCUSSION

We have described and validated a novel measure for the efficacy of microvascular reperfusion, in two independent STEMI cohorts. Higher TRT had clinical utility for predicting MVO extent and clinical outcomes, independent of established predictors. The results support the potential clinical utility of TRT for stratified medicine in patients with acute MI.

Though TRT and IMR are correlated, we observed discordance between high and low dichotomised TRT and IMR values in 54 patients (20%), indicating that these parameters are not one and the same. We used 32 as the cut-off for dichotomising IMR, because  $IMR>32$  is being used to select patients for inclusion in clinical trials[2]. When an IMR cut-off of 40 was used, discordance between high and low dichotomised IMR and TRT occurred in 61 patients (23%). TRT measures different aspects of the thermodilution curve than Tmn, which is used to calculate IMR. For calculating IMR, the Tmn starts at the steepest downslope of the temperature-time curve (measured by the wire's shaft thermistor). This transit time measurement ends midway between the peak temperature drop (measured by the wire's distal thermistor) and 10% from return of the distal thermistor temperature to baseline. In contrast, the TRT measurement only incorporates the part of the temperature-time curve from peak temperature drop to 20% from return to baseline temperature. The independence of TRT, but

not IMR, from coronary and systemic haemodynamics (i.e. Pa, or Pd) further distinguishes TRT from IMR.

The reproducibility of IMR may be influenced by coronary perfusion pressure and variability in manual bolus-injection speed[2]. It is theoretically plausible that when injection speed is slower, it would take longer for the initial part of the thermodilution curve to reach peak temperature drop, than when injection speed is faster. It is potentially plausible that the recovery part of the thermodilution curve (nadir to baseline body temperature) may be less sensitive to this variability. Published literature evaluating this theory is not available, hence it may merit evaluation in future research.

Considering translation to clinical practice, measuring TRT should be more straightforward for use by clinicians who are less experienced with thermodilution methodology. This is because TRT is calculated precisely using an automated algorithm using dedicated software (Coroventis™, Upsala, Sweden) in the catheterisation laboratory. Alternatively, for precise calculation of IMR the operator must confirm that the position of the marker is at the lowest stable Pd/Pa during hyperaemia, which may be positioned incorrectly by automated software. The classification of bimodal thermodilution waveforms is not automatically determined by analysis software. CFR, which reflects epicardial and microcirculatory vasodilator capacity, and residual epicardial stenosis, is calculated using an automated algorithm, however CFR does not improve the predictive ability of IMR alone[9].

Reliable identification of patients with a high probability of having MVO may potentially improve research study design, by selecting patients in the catheterisation laboratory for inclusion in therapeutic trials. Moreover, accurate identification of STEMI patients who will not develop MVO, could potentially reduce healthcare costs through stratification and triage for earlier hospital discharge[11].

## Strengths and Limitations

Strengths of this study include the blinding of coronary physiology measurements to minimise bias, the high follow up rates with CMR, and the prospective validation of TRT with independent adjudication of clinical events.

A limitation is that duplicate TRT and IMR measurements were available in only 13 patients. Therefore, further research is needed to study the reproducibility of TRT, compared to IMR in a larger number of patients. Second, the limited number of composite outcome events constrained the statistical power of multivariable models.

Limitations of the bolus-derived thermodilution technique should be considered. Notably, higher intra-observer variability of thermodilution-, compared to Doppler-derived CFR measurements has been demonstrated[12], the hyperaemic response to adenosine can be attenuated by caffeine, and manual bolus-injections of saline can be a source of variability. Thermodilution-based absolute flow and microvascular resistance measurements, using continuous infusion of saline to induce steady-state maximal hyperaemia, has potential to have superior reproducibility[6]. However, it requires a dedicated infusion catheter, and can be more technically challenging.

A test with a binary cut-off (normal/ abnormal) is generally helpful for patient stratification in the clinic and in therapeutic trials. However, the optimal cut-off for predicting adverse events may vary between different populations and different endpoints. There was discordance between post-PCI TRT (dichotomised by 0.5) and MVO presence/ absence in about one third of patients, which was also observed when an IMR threshold of 32 was applied. There may be several explanations. First, higher TRT and IMR are correlated with greater amounts of MVO, hence one would expect there to be discordance when binary cut-offs are applied. Second, the differences in timing of measuring TRT or IMR (acute) vs. CMR



imaging (sub-acute) is relevant because microvascular dysfunction is dynamic within minutes to the first few days after reperfusion. When microvascular function is measured immediately post-primary PCI, reversible oedema may contribute more to microvascular injury, than on CMR 2-7 days later, where irreversible microvascular injury (including myocardial haemorrhage) may persist.

A more robust way to validate TRT could be a comparison with positron emission tomography, or an experimental model with perivascular flow probes or microspheres, enabling calculation of coronary flow and myocardial resistance. Further research is warranted to further validate the findings reported in this paper.

## **Conclusion**

TRT predicts MVO and prognosis, independent of established predictors. TRT represents a novel diagnostic advance for detecting failed microvascular reperfusion invasively. TRT has potential to refine risk stratification after primary PCI. Further research is needed to evaluate the potential clinical utility of TRT-guided selection of patients for adjunctive treatments during primary PCI.

## IMPACT ON DAILY PRACTICE

IMR is a validated invasive coronary physiology test for evaluating immediate efficacy of microcirculatory reperfusion, but has some limitations for clinical translation. We describe and validate a novel physiology parameter, the thermodilution-derived temperature recovery time (TRT), which predicts MVO and prognosis, independent of IMR>32 and other established predictors. TRT is a novel diagnostic advance for detecting failed microcirculatory reperfusion, which has potential to refine risk stratification and selection of patients for adjunctive treatments after primary PCI.

## ACKNOWLEDGEMENTS

We thank the patients, investigators and staff who participated in and supported this study.

## FUNDING

The British Heart Foundation (BHF) supported AMM (FS/16/74/32573) and CB (RE/18/6134217; FS/16/74/32573). The derivation cohort was supported by the BHF (PG/11/2/2874; RE/13/5/30177). T-TIME was supported by grant 12/170/4 from the NIHR-EME. Boehringer-Ingelheim U.K. Ltd. provided the study drugs (alteplase 10mg, 20mg), matched placebo, and sterile water for injection. These organisations had no other involvement in the conduct of the study, or the manuscript.

## DISCLOSURES

CB is supported by a BHF Centre of Research Excellence award (RE/18/6134217; FS/16/74/32573) and grant 12/170/4 from the NIHR-EME. CB is named on institutional research and/or consultancy agreements between Glasgow University and Abbot Vascular, AstraZeneca, Boehringer Ingelheim, Coroventis, Corstem, GSK, Heartflow, Novartis, Philips, and Siemens Healthcare. These companies had no involvement in the manuscript. KGO has served as a consultant and speaker for Abbot Vascular and Boston Scientific.

## REFERENCES

1. de Waha S, Patel MR, Granger CB, Ohman EM, Machara A, Eitel I, Ben-Yehuda O, Jenkins P, Thiele H, Stone GW. Relationship between microvascular obstruction and adverse events following primary percutaneous coronary interventions for ST-segment elevation myocardial infarction: an individual patient data pooled analysis from seven randomised trials. *Eur Heart J*.2017;**38**(47):3502-3510.
2. Maznyczka AM, Oldroyd KG, McCartney P, McEntegart M, Berry C. The potential use of the index of microcirculatory resistance to guide stratification of patients for adjunctive therapy in acute myocardial infarction. *JACC Cardiovasc Interv*.2019;**12**(10):951-966.
3. Ng MK, Yeung AC, Fearon WF. Invasive assessment of the coronary microcirculation: superior reproducibility and less haemodynamic dependence of index of microcirculatory resistance compared with coronary flow reserve. *Circulation*.2006;**113**(17):2054-61.
4. Fearon WF, Low AF, Yong AS, McGeoch R, Berry C, Shah MG, Ho MY, Kim HS, Loh JP, Oldroyd KG. Prognostic value of the index of microcirculatory resistance measured after primary percutaneous coronary intervention. *Circulation*.2013;**127**(24):2436-41.
5. Fearon WF, Shah M, Ng M, Brinton T, Wilson A, Tremmel JA, Schnittger I, Lee DP, Vagelos RH, Fitzgerald PJ, Yock PG, Yeung AC. Predictive value of the index of microcirculatory resistance in patients with ST-segment elevation myocardial infarction. *J Am Coll Cardiol*.2008;**51**(5):560-65.
6. Xaplanteris P, Fournier S, Keulards DCJ, Adedji J, Ciccarelli G, Milkas A, Pellicano M, van't Veer M, Barbato E, Pijls NHJ, Bruyne BD. Catheter-Based Measurements of

Absolute Coronary Blood Flow and Microvascular Resistance. *Circ Cardiovasc Interv.* 2018;11:1–8.

7. Van Herck PL, Paelinck BP, Haine SE, Claeys MJ, Miljoen H, Bosmans JM, Parizel PM, Vrints CJ. Impaired coronary flow reserve after a recent myocardial infarction: correlation with infarct size and extent of microvascular obstruction. *Int J Cardiol.* 2013. **167**(2):351-6.
8. Fukunaga M, Fujii K, Kawasaki D, Sawada H, Miki K, Tamaru H, Imanaka T, Iwasaku T, Nakata T, Shibuya M, Akahori H, Masutani M, Kobayashi K, Ohyanagi M, Masuyama T. Thermodilution-derived coronary blood flow pattern immediately after coronary intervention as a predictor of microcirculatory damage and midterm clinical outcomes in patients with ST-segment-elevation myocardial infarction. *Circ Cardiovasc Interv.* 2014. **7**(2):149-55.
9. Carrick D, Haig C, Ahmed N, Carberry J, Yue May VT, McEntegart M, Petrie MC, Eteiba H, Lindsay M, Hood S, Watkins S, Davie A, Mahrous A, Mordi I, Ford I, Radjenovic A, Oldroyd KG, Berry C. Comparative prognostic utility of indexes of microvascular function alone or in combination in patients with an acute ST-segment-elevation myocardial infarction. *Circulation.* 2016. **134**(23):1833-1847.
10. McCartney PJ, Eteiba H, Maznyczka AM, McEntegart M, Greenwood JP, Muir DF, Chowdhary S, Gershlick AH, Appleby C, Cotton JM, Wragg A, Curzen N, Oldroyd KG, Lindsay M, Rocchiccioli JP, Shaukat A, Good R, Watkins S, Robertson K, Malkin C, Martin Lm Gillespie L, Ford TJ, Petrie MC, Macfarlane PW, Tait RC, Welsh P, Sattar N, Weir RA, Kox KA, Ford I, McConnachie A, Berry C; T-TIME Group. Effect of low-dose intracoronary alteplase during primary percutaneous coronary intervention on microvascular obstruction in patients with acute myocardial infarction: a randomised clinical trial. *JAMA.* 2019. **321**(1):56-68.

11. Fahrni G, Wolfrum M, De Maria GL, Cuculi F, Dawkins S, Alkhalil M, Patel N, Forfar JC, Prendergast BD, Choudhury RP, Channon KM, Banning AP, Kharbanda RK. Index of microcirculatory resistance at the time of primary percutaneous coronary intervention predicts early cardiac complications: insights from the OxAMI (Oxford Study in Acute Myocardial Infarction) cohort. *J Am Heart Assoc.* 2017;6(11).
12. Everaars H, de Waard GA, Driessen RS, Danad I, van de Ven PM, Rajimakers PG, Lammertsma AA, van Rossum AC, Knaapen P, van Royen N. Doppler flow velocity and thermodilution to assess coronary flow reserve: a head-to-head comparison with [<sup>15</sup>O]H<sub>2</sub>O PET. *JACC Cardiovascular Interv.* 2018;11(20):2044-2054.

## FIGURE LEGENDS

**Figure 1.** Title: ROC curves from the derivation population, for association with: presence of MVO (A); death/ heart failure hospitalisation (B & C) and; MACE (D & E). Abbreviations: CFR=coronary flow reserve; HTmn=mean hyperaemic transit time; IMR=index of microcirculatory resistance; MVO=microvascular obstruction; ROC=receiver operating characteristic; TRT=temperature recovery time.

**Figure 2.** Title: From the derivation population; (A) example of IMR-TRT discordance; (B) scatter graph showing IMR-TRT discordance and IMR/ TRT-MVO (microvascular obstruction) discordance and; (C) patients with MVO stratified by combinations of  $IMR \leq 32$ ,  $IMR > 32$ ,  $TRT \leq 0.5$  and  $TRT > 0.5$ . Legend: **A.** Thermodilution curves obtained in triplicate at rest (blue) and during hyperaemia (orange), after primary percutaneous coronary intervention. This patient had high TRT and normal IMR. CMR (cardiovascular magnetic resonance) imaging revealed transmural antero-septal myocardial infarction complicated by MVO. **C.** P-values from Chi-square test ( $\chi^2$ ).

Abbreviations: IMR=index of microcirculatory resistance; TRT=temperature recovery time.

## TABLES

**Table 1.** Characteristics for the derivation population. Data are mean±SD, or n (%) unless otherwise stated.

Derivation Population Characteristics	Overall (n=271)	TRT≤0.5 (n=143)	TRT>0.5 (n=128)	p-value
Age, years	59.5±1.5	57.2±11.1	62.0±11.4	<b>0.001</b> †
Male	194 (71.6)	98 (68.5)	96 (75.0)	0.239‡
Current smoker	170 (62.7)	98 (68.5)	72 (56.3)	<b>0.037</b> ‡
Body mass index, kg/m <sup>2</sup>	28.7±4.8	29.2±4.9	28.0±4.5	<b>0.040</b> †
Hypertension	85 (31.4)	45 (31.5)	40 (31.3)	0.969‡
Diabetes mellitus	30 (11.1)	15 (10.5)	15 (11.7)	0.747‡
Previous myocardial infarction	18 (6.6)	9 (6.3)	9 (7.0)	0.808‡
Reperfusion strategy				0.344‡
Primary PCI	250 (92.3)	134 (93.7)	116 (90.6)	
Thrombolysis followed by PCI	21 (7.8)	9 (6.3)	12 (9.4)	
Presenting heart rate, beats per minute	78.1±16.7	78.2±16.9	78.0±16.7	0.928†
Presenting systolic blood pressure, mmHg	135.2±25.1	134.5±24.8	133.2±25.4	0.217†
Ischaemic time, hours, median (IQR)	2.92 (2.0-5.4)	2.8 (2.0-5.0)	3.4 (2.2-5.7)	0.101§
Baseline creatinine, µmol/L	76.9±18.8	74.5±19.1	79.7±18.1	0.022‡
<b>Procedural Characteristics</b>				
Culprit artery				0.364‡
Left anterior descending/ left main	100 (36.9)	50 (35.0)	50 (39.1)	
Circumflex	52 (19.2)	32 (22.4)	20 (15.6)	
Right coronary artery	119 (43.9)	61 (42.7)	58 (45.3)	
No. of main vessels diseased				0.650‡
1	148 (54.6)	78 (54.6)	70 (54.7)	
2	84 (31.0)	42 (29.4)	42 (32.8)	
3	39 (14.4)	23 (16.1)	16 (12.5)	
Thrombus aspiration	195 (72.0)	102 (71.3)	93 (72.7)	0.808‡
Glycoprotein IIb/IIIa inhibitor	249 (91.9)	132 (92.3)	117 (91.4)	0.786‡



†student's t-test. ‡ $\chi^2$  test. §Mann-Whitney test. Missing data: ischaemic time, n=18; creatinine n=1. Abbreviations: IQR=interquartile range; PCI=percutaneous coronary intervention; TRT=temperature recovery time.

Copyright EuroIntervention

**Table 2.** From the derivation population, electrocardiogram, angiogram, and coronary physiology parameters on admission and CMR findings at 2-7 days after PCI for STEMI.

Data are mean±SD, or n (%) unless otherwise stated.

	Overall	TRT≤0.5	TRT>0.5	p-value
Derivation Population Parameters	n=271	n=143	n=128	
<b>Electrocardiogram</b>				
ST-segment resolution:				<b>0.020<sup>‡</sup></b>
Complete, ≥70%	123 (45.6)	76 (53.5)	47 (36.7)	
<70%	147 (54.4)	66 (46.5)	81 (63.3)	
<b>Angiogram</b>				
Initial TIMI coronary flow grade:				<b>0.029<sup>‡</sup></b>
0	157 (57.9)	73 (51.1)	84 (65.6)	
1	34 (12.6)	18 (12.6)	16 (12.5)	
2	43 (15.9)	25 (17.5)	18 (14.1)	
3	37 (13.7)	27 (18.9)	10 (7.8)	
Final TIMI coronary flow grade:				<b>0.003<sup>‡</sup></b>
1	1 (0.4)	1 (0.7)	0	
2	13 (4.8)	1 (0.7)	12 (9.4)	
3	257 (94.8)	141 (98.6)	116 (90.6)	
TIMI frame count post-PCI, median (IQR)	14.0 (10.0-24.0)	12.0 (8.2-20.0)	17.8 (10.6-25.4)	<b>0.004§</b>
Myocardial perfusion grade post-PCI:				<b>0.028<sup>‡</sup></b>
≤1	76 (28.0)	32 (22.4)	44 (34.4)	
≥2	195 (72.0)	111 (77.6)	84 (65.6)	
<b>Coronary Physiology Post-PCI</b>				
Hyperaemic Pa, mmHg, median (IQR)	76.0 (68.0-87.0)	76.0 (68.0-89.0)	76.0 (67.0-86.5)	0.515§
Hyperaemic Pd, mmHg, median (IQR)	70.0 (60.0-80.0)	69.0 (60.0-79.8)	71.0 (60.0-81.5)	0.983§
IMR, median (IQR)	24.0 (15.0-43.0)	15.4 (11.0-21.1)	44.1 (27.0-63.0)	<b>&lt;0.001§</b>
IMR>32	100 (36.9)	13 (9.1)	87 (68.0)	<b>&lt;0.001§</b>

CFR, median (IQR)	1.6 (1.1-2.1)	1.7 (1.3-2.4)	1.4 (1.0-1.8)	<0.001§
CFR≤2	196 (72.3)	93 (66.0)	103 (83.1)	0.002‡
Hyperaemic Tmn, (s) median (IQR)	0.4 (0.2-0.6)	0.2 (0.2-0.3)	0.6 (0.4-0.9)	<0.001§
Hyperaemic Tmn>median	132 (48.7)	22 (15.4)	110 (0.9)	<0.001‡
Waveform:				<0.001‡
Bimodal	34 (12.5)	5 (3.5)	29 (22.7)	
Wide unimodal	98 (36.2)	38 (26.6)	60 (46.9)	
Narrow unimodal	139 (51.3)	100 (69.9)	39 (30.5)	
<b>CMR 2-7days after PCI</b>				
Time from PCI to CMR (days)	2.1±1.9	2.2±1.9	1.9±1.9	0.174†
MVO extent (% left ventricular mass)	0.2 (0.0-3.3)	0.0 (0.0-1.6)	2.0 (0.0-6.8)	<0.001§
MVO present	137 (50.6)	52 (36.4)	85 (66.4)	<0.001‡

‡ $\chi^2$  test. §Mann-Whitney test. †student t-test. Missing: CFR, n=6; Pa post-PCI, n=57;

ST-segment resolution, n=1. Abbreviations: CFR=coronary flow reserve;

CMR=cardiovascular magnetic resonance; IMR=index of microcirculatory resistance;

IQR=interquartile range; MVO=microvascular obstruction; Pa=aortic pressure;

PCI=percutaneous coronary intervention; Pd=distal coronary pressure; TIMI=Thrombolysis in

Myocardial Infarction; Tmn=mean transit time; TRT=temperature recovery time.

**Table 3.** From the derivation population, logistic and linear regression analyses, showing associations between TRT, MVO, and clinical outcomes.

	Univariable analysis		Multivariable analysis	
	OR/ coefficient	p-value	OR/ coefficient	p-value
	(95% CI)		(95% CI)	
<b>Associations with MVO extent (%LV mass) on CMR 2-7 days post-PCI*</b>				
TRT continuous	4.38 (3.07-5.68)	<b>&lt;0.001</b>	4.09 (2.70-5.48)	<b>&lt;0.001</b>
TRT>0.5	2.84 (1.71-3.97)	<b>&lt;0.001</b>	2.69 (1.49-3.89)	<b>&lt;0.001</b>
TRT>0.5 (IMR>32, substituted by continuous IMR in model)			1.53 (-0.18, 3.23)	0.080
*Other variables in multivariable model: age, ischaemic time, IMR>32, CFR≤2, hyperaemic Tmn>median, thermodilution waveform				
<b>Associations with MVO presence on CMR 2-7 days post-PCI†</b>				
TRT continuous	5.84 (2.72-12.56)	<b>&lt;0.001</b>	5.26 (2.36-11.74)	<b>&lt;0.001</b>
TRT>0.5	3.46 (2.10-5.71)	<b>&lt;0.001</b>	3.01 (1.75-5.16)	<b>&lt;0.001</b>
TRT>0.5 (IMR>32, substituted by continuous IMR in model)			1.72 (0.78-3.77)	0.178
† Other variables in multivariable model: age, ischaemic time, IMR>32, CFR≤2, hyperaemic Tmn>median, thermodilution waveform				
<b>Associations with 30-day death/ heart failure hospitalisation‡</b>				
TRT continuous	6.64 (2.90-15.24)	<b>&lt;0.001</b>	7.37 (2.37-22.94)	<b>0.001</b>
TRT>0.5	8.14 (2.35-28.20)	<b>0.001</b>	7.13 (1.78-28.66)	<b>0.006</b>
TRT>0.5 (IMR>32, substituted by continuous IMR in model)			4.48 (1.14-17.63)	<b>0.032</b>
‡Other variables in multivariable model: IMR>32				
<b>Associations with death/ heart failure hospitalisation at median 5-years§</b>				
TRT continuous	3.85 (1.97-7.51)	<b>&lt;0.001</b>	4.14 (2.08-8.25)	<b>&lt;0.001</b>
TRT>0.5	3.11 (1.63-5.93)	<b>0.001</b>	6.44 (2.48-16.71)	<b>&lt;0.001</b>
TRT>0.5 (IMR>32, substituted by continuous IMR in model)			5.37 (2.00-14.43)	<b>0.001</b>
§Other variables in multivariable model: IMR>32, CFR≤2, hyperaemic Tmn>median, thermodilution waveform				
<b>Associations with 30-day MACE‡</b>				
TRT continuous	6.51 (2.89-14.69)	<b>&lt;0.001</b>	7.38 (2.41-22.55)	<b>&lt;0.001</b>
TRT>0.5	9.16 (2.66-31.51)	<b>&lt;0.001</b>	8.57 (2.18-33.63)	<b>0.002</b>
TRT>0.5 (IMR>32, substituted by continuous IMR in model)			5.18 (1.34-19.99)	<b>0.017</b>
‡Other variables in multivariable model: IMR>32				

---

**Associations with MACE at median 5-years§**

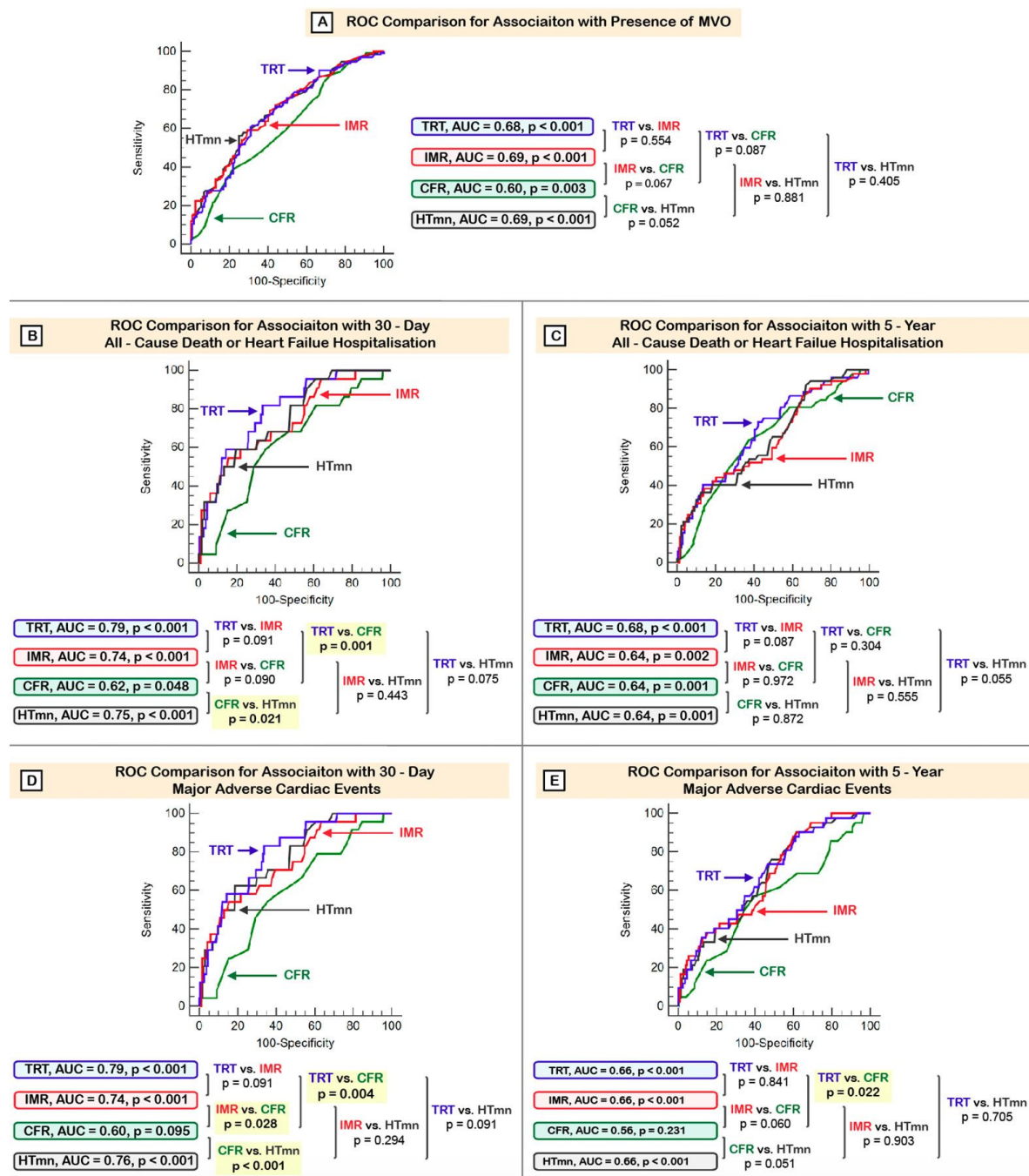
TRT continuous	3.55 (1.79-7.03)	<b>&lt;0.001</b>	4.05 (2.00-8.21)	<b>&lt;0.001</b>
TRT>0.5	2.39 (1.21-4.71)	<b>0.012</b>	2.65 (1.32-5.30)	<b>0.006</b>
TRT>0.5 (IMR>32, substituted by continuous IMR in model)			2.19 (0.76-6.29)	0.145

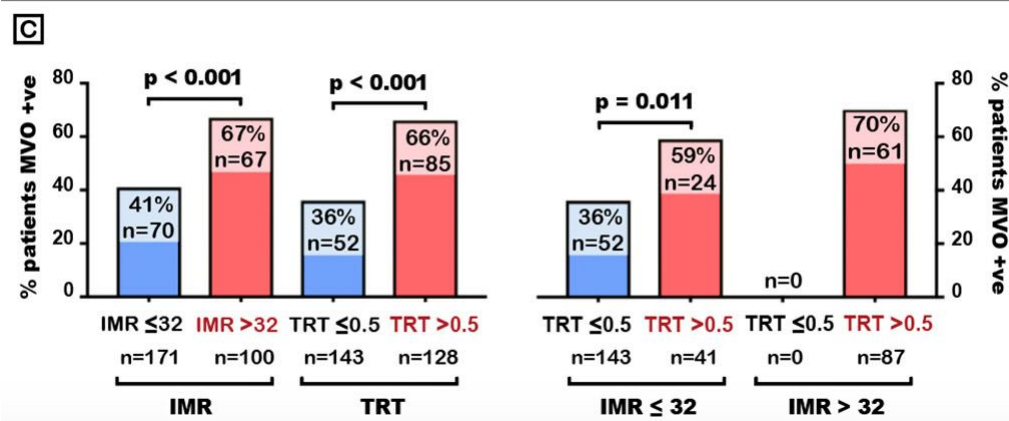
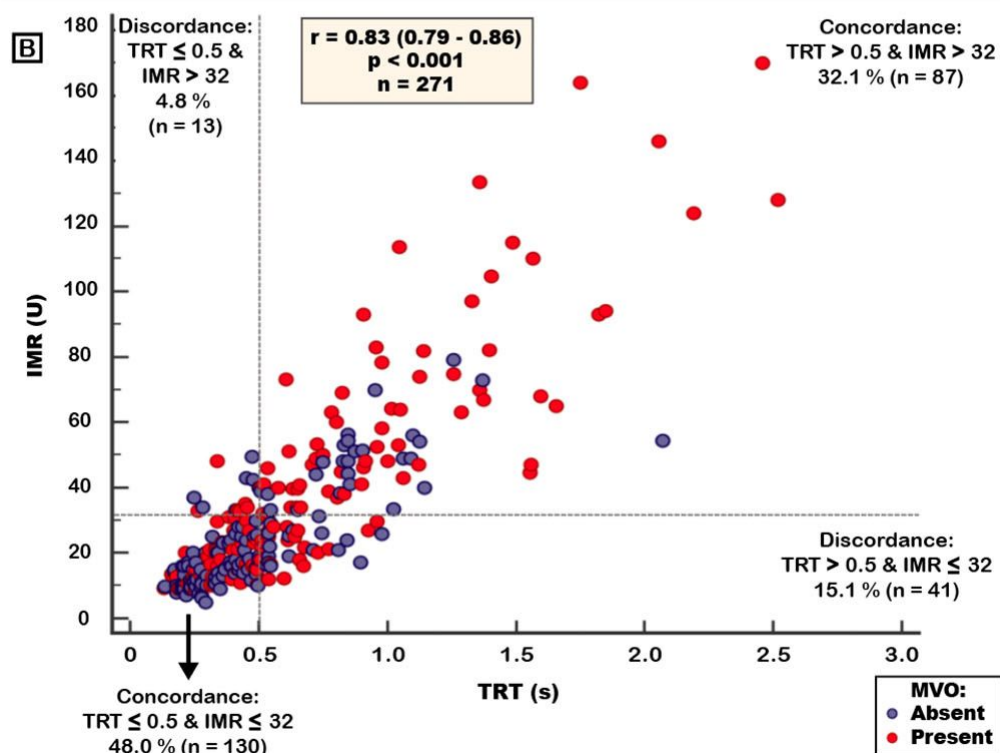
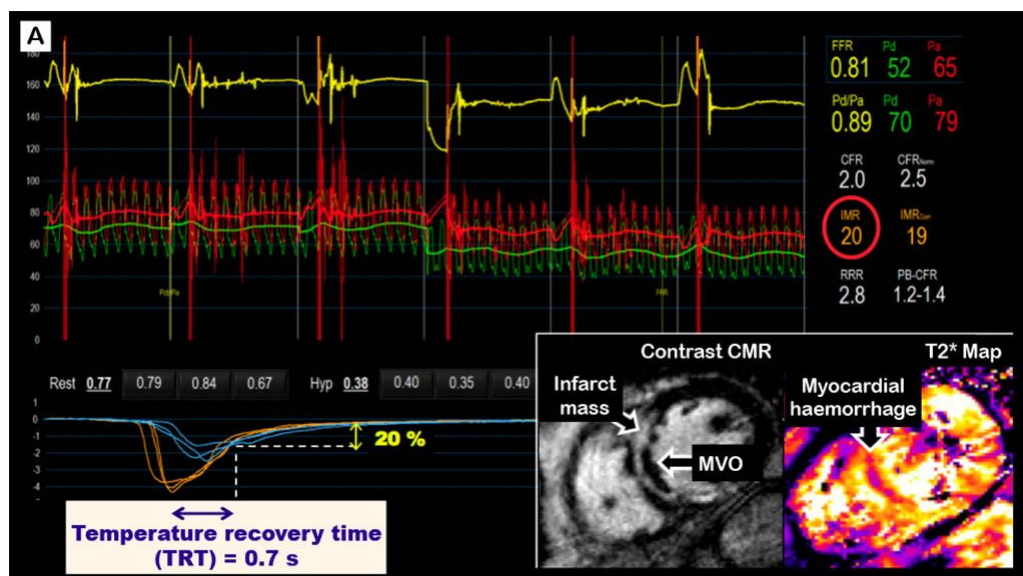
---

§Other variables in multivariable model: IMR>32, CFR≤2, hyperaemic Tmn>median, thermodilution waveform

---

Abbreviations: CFR=coronary flow reserve; CI=confidence interval; CMR=cardiovascular magnetic resonance; IMR=index of microcirculatory resistance; LV=left ventricular; MVO=microvascular obstruction; OR=odds ratio; PCI=percutaneous coronary intervention; Tmn=mean transit time; TRT=temperature recovery time





# SUPPLEMENTARY MATERIAL

## Thermodilution-Derived Temperature Recovery Time, a Novel Predictor of Microvascular Reperfusion and Prognosis After Myocardial Infarction

ClinicalTrials.gov Identifiers: NCT02072850 & NCT02257294

### CONTENTS

<b>Eligibility criteria for the T-TIME clinical trial</b>	Page 3
<b>Angiogram acquisition and analysis methods</b>	Page 6
<b>Invasive coronary physiology acquisition and analysis methods</b>	Page 9
<b>Statistical methods</b>	Page 10
<b>Supplementary Table 1.</b> From the derivation population, summary of logistic and linear regression analyses, showing univariable and multivariable associations (with IMR>40 in multivariable models) between TRT and MVO, all-cause death/ heart failure hospitalisations, or major adverse cardiac events	Page 11
<b>Supplementary Table 2.</b> Summary of logistic and linear regression analyses, showing univariable and multivariable associations (with IMR>32 in multivariable models) between TRT, and angiogram parameters at the end of PCI	Page 13
<b>Supplementary Table 3.</b> Summary of logistic and linear regression analyses, showing univariable and multivariable associations (with IMR>40 in multivariable models) between TRT, and angiogram parameters at the end of PCI	Page 15
<b>Supplementary Table 4.</b> Characteristics for the validation population.	Page 17



<b>Supplementary Table 5.</b> From the validation population, electrocardiogram, angiogram, and coronary physiology parameters on admission and CMR findings at 2-7 days after PCI for STEMI.	Page 19
<b>Supplementary Figure 1.</b> Study design and patients included, for retrospective derivation and prospective validation of TRT	Page 21
<b>Supplementary Figure 2.</b> Derivation of the optimal definition for TRT	Page 22
<b>Supplementary Figure 3.</b> From the derivation population, distribution of TRT	Page 23
<b>Supplementary Figure 4.</b> Examples of clinical cases	Page 24
<b>Supplementary Figure 5.</b> Bland-Altman plot of differences plotted against the averages of paired TRT measurements after primary-PCI	Page 25

## Eligibility criteria for the T-TIME clinical trial

Patients with a clinical diagnosis of acute ST-segment elevation myocardial infarction (STEMI) were eligible for randomisation according to the following eligibility criteria:

### *Inclusion*

- Acute MI (symptom onset  $\leq$  6 hours) with persistent ST-segment elevation or recent left bundle branch block
- Coronary artery occlusion (TIMI [Thrombolysis in Myocardial Infarction] coronary flow grade 0 or 1), or impaired coronary flow (TIMI coronary flow grade 2, slow but complete filling) in the presence of definite angiographic evidence of thrombus (TIMI grade 2 or more)
- Proximal-mid culprit lesion location in a major coronary artery (i.e. the right, left anterior descending, intermediate, or circumflex artery)
- Radial artery access
- TIMI coronary flow grade  $\geq 2$  pre-stent achieved prior to randomisation.
- Informed consent, i.e. only patients who were sufficiently well to understand the information about the study, as described by the attending cardiologist, were eligible to participate.

### *Exclusion*

- Normal flow in the culprit coronary artery at initial angiography (TIMI grade 3)
- Functional coronary collateral supply (Rentrop grade 2/3) to the culprit artery
- Previous infarction in the culprit artery (known or suspected clinically, e.g. wall motion abnormality revealed by echocardiography)
- Cardiogenic shock (Killip Class IV)

- Multivessel percutaneous coronary intervention (PCI) intended before the day 2-7 cardiovascular magnetic resonance (CMR) scan
- Estimated body weight <60 kg
- Non-cardiac co-morbidity with expected survival <1 year
- Contra-indication to contrast-enhance CMR imaging
- Pacemaker, or implantable defibrillator
- Known impaired renal function (estimated glomerular filtration rate <30ml/min)
- Significant bleeding disorder either at present or within the past 6 months
- Known haemorrhagic diathesis
- Patient with current concomitant oral anticoagulation therapy (international normalized ratio >1.3), including apixaban, dabigatran and rivaroxaban
- Any history of central nervous system damage (i.e. neoplasm, aneurysm, intracranial or spinal surgery)
- Severe hypertension (blood pressure >180/110 mmHg) not controlled by medical therapy
- Major surgery, biopsy of a parenchymal organ, or significant trauma within the past 3 months (this includes any trauma associated with the current acute MI)
- Recent trauma to the head (<2 months)
- Prolonged cardiopulmonary resuscitation (>2 minutes) within the past 2 weeks
- Acute pericarditis and/ or subacute bacterial endocarditis
- Acute pancreatitis
- Severe hepatic dysfunction, including hepatic failure, cirrhosis, portal hypertension (oesophageal varices) and active hepatitis
- Active peptic ulceration
- Arterial aneurysm and known arterial/ venous malformation

- Neoplasm with increased bleeding risk
- Any known history of haemorrhagic stroke, or stroke of unknown origin
- Known history of ischemic stroke, or transient ischemic attack in the preceding 6 months
- Dementia
- Hypersensitivity to gentamicin, or natural rubber
- Incapacity, or inability to provide informed consent
- Previous randomisation to this study, or participation in a study with an investigational drug, or medical device within 90 days prior to randomization
- Women of child bearing potential (i.e. pre-menopausal), or breast feeding
- Requirement for immunosuppressive therapy at any time during the preceding 3 months. This would include corticosteroids (but not inhaled or topical), drugs used following transplantation (e.g. tacrolimus, cyclosporine), anti-metabolite therapies (e.g. mycophenolic acid, azathioprine, leflunomide and immunomodulators including biologics (e.g. adalimumab, etanercept) and disease modifying anti-rheumatic drugs. This list is not exhaustive.
- Active or prophylactic treatment with oral, or parenteral antibiotic, antifungal, or antiviral therapy, to prevent or treat infection
- Any anti-cancer treatment (excluding surgery as this is covered above) at any time during the preceding 3 months, including chemotherapy, radiotherapy, and treatment with biologics, such as Vascular Endothelial Growth Factor Receptor (VEGFR) inhibitors (e.g. bevacizumab, pazopanib). This list is not exhaustive.
- Any significant concurrent, or recent condition(s) not listed above that in the opinion of the treating clinician would pose an additional risk to the patient.

## Angiogram acquisition and analysis methods

Coronary angiograms were acquired during emergency care with cardiac catheter laboratory X-ray and information technology equipment. The angiograms were analysed using post-processing software (QAngio® XA Medis, Leiden, NL.) by experienced investigators who were blinded to treatment allocation. Catheter calibration was performed using the catheter calibration function on MEDIS QAngio. For each lesion, a view perpendicular to the long axis of the vessel was used in order to avoid foreshortening and overlap of branches. The single plane projection showing the best opacified and most severe lesion with minimal foreshortening and minimal branch overlap was selected. Feedback was provided to sites on the quality and completeness of the angiograms.

Non-culprit lesions  $\geq 50\%$  visual stenosis, in main vessels, were included in assessment for multivessel disease.

### TIMI Coronary Flow Grade

The TIMI coronary flow grade was assessed using the following definitions:

TIMI coronary flow grade	Definition
0	No flow
1	Minimal flow past obstruction
2	Slow (but complete) filling and slow clearance
3	Normal flow and clearance

## TIMI Myocardial Perfusion Grade

TIMI myocardial perfusion grade provides a score for ground-glass appearance ('blush') of the contrast entering the microvasculature and contrast washout. TIMI myocardial perfusion grade was assessed according to the following definitions:

TIMI myocardial perfusion grade	Definition
0	Minimal or no myocardial blush in the distribution of the culprit artery.
1	Myocardial blush is present in the distribution of the culprit artery. But there is incomplete clearance of dye between injections (with ~ 30 seconds between injections).
2	Myocardial blush is present in the distribution of the culprit artery. But there is slow contrast entry into the microvasculature and slow clearance of contrast. Specifically, blush is strongly persistent (i.e. either does not or only minimally diminishes in intensity) beyond 3 cardiac cycles after injection.
3	Myocardial blush is present in the distribution of the culprit artery, with normal entry and exit of dye (mild/ moderate persistence of dye beyond 3 cardiac cycles, but notably reduced after 3 cardiac cycles). Blush that is only mild intensity throughout 3 cardiac cycles after injection (washout phase), but fades minimally is also classified as grade 3.

## **TIMI Frame Count**

The TIMI frame count represents the amount of time (in frames) for contrast dye to reach a standardised distal landmark. If the culprit vessel was the left anterior descending artery the frame count was divided by 1.7 (correcting for longer vessel length).

## **Invasive coronary physiology acquisition and analysis methods**

Intracoronary nitroglycerin (200 $\mu$ g) was administered to the culprit artery. A calibrated wire was equalised to guide catheter pressure, then advanced to the distal third of the culprit artery. Using thermodilution, the mean transit time (Tmn) of a hand injected 3ml bolus of room temperature saline was measured in triplicate at rest and during steady-state maximal hyperaemia, induced by intravenous adenosine (140 $\mu$ g/kg/min). Simultaneous measurements of Pa, and Pd were made.

To mitigate potential bias through disclosure of IMR, CFR, or TRT results, the operators were blinded by obscuring the display of the RadiAnalyzer™ Xpress monitor. Experienced physiology technicians recorded the thermodilution data and quality assured the acquisition. Data were extracted from the RadiAnalyzer™ Xpress instrument and analysed offline (Coroventis Research AB, Uppsala, Sweden). At the end of primary PCI when IMR was measured after stenting, there was no residual epicardial stenosis, therefore IMR correction with wedge pressure, or Yong's formula was not required.

A narrow unimodal waveform was defined as an acute temperature reduction (duration of <0.42 seconds from the beginning of the temperature reduction to nadir temperature) followed by rapid return to resting temperature. A wide unimodal waveform was defined as a temperature decrease to nadir >0.42 seconds, followed by a gradual return to baseline

temperature. A bimodal waveform was defined as having 2 distinct nadirs, with a valley deeper than 20% of peak temperature drop.

The coronary physiology data were evaluated in the Glasgow Core Laboratory, according to a standard operating procedure, by an investigator blinded to the CMR data (A.M.M.) with the readings second read by an experienced investigator (C.B.). The final coronary physiology data were established by consensus agreement.

### Statistical methods

Between-group comparisons of continuous variables used the Student's t-test, or Mann-Whitney test. Differences in proportions were assessed with a  $\chi^2$  test. Associations with MVO extent were assessed with linear regression, and the regression coefficients represented mean change in MVO extent for a 1-unit increase in TRT. Association with MVO presence, or clinical outcomes were evaluated using odds ratios (ORs), from logistic regression. A preponderance of heart failure episodes occurred during the index hospitalisation, therefore the assumption for the Cox proportional hazards regression model for constant effects over time was not met. The associations with MVO were adjusted for the following covariates: age, ischaemic time,  $\text{CFR} \leq 2$ ,  $\text{IMR} > 32$ , hyperaemic  $\text{Tmn} > \text{median}$  and thermodilution waveform (bimodal or wide unimodal vs. narrow unimodal). There was *a priori* concern that these covariates were clinically relevant confounders. Non-dichotomised continuous TRT, IMR, CFR, or hyperaemic Tmn were not included together in multivariable models due to collinearity. Stepwise regression was performed and the validity of regressions was verified by analysis of model residuals, testing for heteroscedasticity and multicollinearity.

The predictive value of TRT was evaluated using the McNemar test. Receiver operating characteristic (ROC) curve analysis was performed to detect the optimal cut-off



values for predicting MVO. In this, sensitivity and specificity were considered equally important, therefore the optimal cut-off was considered as the one giving the maximum Youden index. ROC comparisons were made using the DeLong method.

All tests were 2-tailed and a p-value of  $<0.05$  was considered statistically significant. There was no imputation for missing values. Statistical analyses were performed in SPSS (version 25.0, SPSS, IBM, Armonk, NY, USA), or MedCalc Statistical Software version 18 (MedCalc Software, Ostend, Belgium).

Copyright EuroIntervention

**Supplementary Table 1:** From the derivation population, summary of logistic and linear regression analyses, showing univariable and multivariable associations (with IMR>40 in multivariable models) between TRT and MVO, all-cause death/ heart failure hospitalisations, or major adverse cardiac events

	Univariable analysis		Multivariable analysis	
	OR/ coefficient	p-value	OR /coefficient	p-value
	(95% CI)		(95% CI)	
<b>Associations with MVO extent (%LV mass) on CMR 2-7 days post-PCI*</b>				
TRT continuous	4.38 (3.07, 5.68)	<0.001	4.09 (2.70, 5.48)	<0.001
TRT>0.5	2.84 (1.71, 3.97)	<0.001	1.70 (0.25, 3.15)	0.022
TRT>0.5 (IMR>40, substituted by continuous IMR in model)			1.53 (-0.18, 3.23)	0.080
*Other variables in multivariable model: age, ischaemic time, IMR>40, CFR≤2, hyperaemic Tmn>median, thermodilution waveform				
<b>Associations with MVO presence on CMR 2-7 days post-PCI†</b>				
TRT continuous	5.84 (2.72, 12.56)	<0.001	5.26 (2.36, 11.74)	<0.001
TRT>0.5	3.46 (2.10, 5.71)	<0.001	3.01 (1.75, 5.16)	<0.001
TRT>0.5 (IMR>40, substituted by continuous IMR in model)			1.72 (0.78, 3.77)	0.178
† Other variables in multivariable model: age, ischaemic time, IMR>40, CFR≤2, hyperaemic Tmn>median, thermodilution waveform				
<b>Associations with 30-day mortality or heart failure hospitalisation‡</b>				
TRT continuous	6.64 (2.90, 15.24)	<0.001	6.27 (1.89, 20.78)	0.003
TRT>0.5	8.14 (2.35, 28.20)	0.001	5.77 (1.44, 23.14)	0.013
TRT>0.5 (IMR>40, substituted by continuous IMR in model)			4.48 (1.14, 17.63)	0.032
‡Other variables in multivariable model: IMR>40				
<b>Associations with mortality or heart failure hospitalisation at median 5-years§</b>				
TRT continuous	3.85 (1.97, 7.51)	<0.001	4.14 (2.08, 8.25)	<0.001
TRT>0.5	3.11 (1.63, 5.93)	0.001	5.81 (2.16, 15.63)	<0.001
TRT>0.5 (IMR>40, substituted by continuous IMR in model)			5.37 (2.00, 14.43)	0.001
§Other variables in multivariable model: IMR>40, CFR≤2, hyperaemic Tmn>median, thermodilution waveform				
<b>Associations with 30-day MACE‡</b>				
TRT continuous	6.51 (2.89, 14.69)	<0.001	6.06 (1.88, 19.57)	0.003

TRT>0.5	9.16 (2.66, 31.51)	<b>&lt;0.001</b>	6.81 (1.74, 26.62)	<b>0.006</b>
TRT>0.5 (IMR>40, substituted by continuous IMR in model)			5.18 (1.34, 19.99)	<b>0.017</b>

‡Other variables in multivariable model: IMR>40

#### Associations with MACE at median 5-years§

TRT continuous	3.55 (1.79, 7.03)	<b>&lt;0.001</b>	4.05 (2.00, 8.21)	<b>&lt;0.001</b>
TRT>0.5	2.39 (1.21, 4.71)	<b>0.012</b>	2.65 (1.32, 5.30)	<b>0.006</b>
TRT>0.5 (IMR>40, substituted by continuous IMR in model)			2.19 (0.76, 6.29)	0.145

§Other variables in multivariable model: IMR>40, CFR≤2, hyperaemic Tmn>median, thermodilution waveform

Abbreviations: CFR=coronary flow reserve; CI=confidence interval; CMR=cardiovascular magnetic resonance; IMR=index of microcirculatory resistance; LV=left ventricular; MVO=microvascular obstruction; OR=odds ratio; PCI=percutaneous coronary intervention; Tmn=mean transit time; TRT=temperature recovery time

**Supplementary Table 2.** Summary of logistic and linear regression analyses, showing univariable and multivariable associations (with IMR>32 in multivariable models) between TRT, and angiogram parameters at the end of PCI.

DERIVATION COHORT				
	Univariable analysis		Multivariable analysis	
	OR/ coefficient	p-value	OR /coefficient	p-value
	(95% CI)		(95% CI)	
<b>Associations with TIMI frame count at the end of PCI*</b>				
TRT continuous	5.68 (2.34, 9.02)	<b>0.001</b>	2.25 (-2.55, 7.04)	0.357
TRT>0.5	3.80 (0.99, 6.61)	<b>0.008</b>	-0.58 (-4.68, 3.52)	0.781
TRT>0.5 (IMR>32, substituted by continuous IMR in model)			-1.95 (-6.00, 2.09)	0.343
<i>*Other variables in multivariable model: IMR&gt;32, CFR≤2, hyperaemic Tmn&gt;median, thermodilution waveform</i>				
<b>Associations with TIMI coronary flow grade ≤2 at the end of PCI†</b>				
TRT continuous	10.24 (3.84, 27.32)	<b>&lt;0.001</b>	12.24 (3.16, 47.41)	<b>&lt;0.001</b>
TRT>0.5	7.29 (1.6, 33.25)	<b>0.010</b>	4.67 (0.81, 26.82)	0.084
TRT>0.5 (IMR>32, substituted by continuous IMR in model)			1.05 (0.16, 7.03)	0.961
<i>† Other variables in multivariable model: IMR&gt;32</i>				
<b>Associations with myocardial perfusion grade ≤1 at the end of PCI‡</b>				
TRT continuous	3.17 (1.69, 5.95)	<b>&lt;0.001</b>	2.99 (1.57, 5.68)	<b>0.001</b>
TRT>0.5	1.82 (1.06, 3.11)	<b>0.029</b>	1.25 (0.55, 2.84)	0.594
TRT>0.5 (IMR>32, substituted by continuous IMR in model)			1.00 (0.43, 2.32)	0.996
<i>‡Other variables in multivariable model: IMR&gt;32, CFR≤2, hyperaemic Tmn&gt;median, thermodilution waveform</i>				
VALIDATION COHORT				
	Univariable analysis		Multivariable analysis	
	OR/ coefficient	p-value	OR /coefficient	p-value
	(95% CI)		(95% CI)	
<b>Associations with TIMI frame count at the end of PCI*</b>				
TRT continuous	15.18 (10.56, 19.79)	<b>&lt;0.001</b>	13.49 (6.68, 20.30)	<b>&lt;0.001</b>
TRT>0.5	10.98 (6.43, 15.52)	<b>&lt;0.001</b>	4.86 (6.59, 15.63)	<b>&lt;0.001</b>

TRT>0.5 (IMR>32, substituted by continuous IMR in model)	4.94 (-1.41, 11.29)	0.126
--	---------------------	-------

*\*Other variables in multivariable model: IMR>32, CFR≤2, hyperaemic Tmn>median, thermodilution waveform*

#### Associations with TIMI coronary flow grade ≤2 at the end of PCI†

TRT continuous	9.42 (3.32, 26.69)	<0.001	4.10 (1.26, 13.30)	0.019
TRT>0.5	17.55 (2.27, 135.88)	0.006	3.86 (0.37, 40.77)	0.262
TRT>0.5 (IMR>32, substituted by continuous IMR in model)			5.33 (0.58, 48.58)	0.138

*† Other variables in multivariable model: IMR>32*

#### Associations with myocardial perfusion grade ≤1 at the end of PCI‡

TRT continuous	3.30 (1.51, 7.21)	0.003	1.36 (0.46, 4.02)	0.578
TRT>0.5	2.72 (1.28, 5.80)	0.009	0.92 (0.29, 2.95)	0.895
TRT>0.5 (IMR>32, substituted by continuous IMR in model)			0.80 (0.25, 2.53)	0.698

*‡Other variables in multivariable model: IMR>32, CFR≤2, hyperaemic Tmn>median, thermodilution waveform*

Abbreviations: CFR=coronary flow reserve; CI=confidence interval; CMR=cardiovascular magnetic resonance; IMR=index of microcirculatory resistance; MVO=microvascular obstruction; OR=odds ratio; PCI=percutaneous coronary intervention; Tmn=mean transit time; TRT=temperature recovery time

**Supplementary Table 3.** Summary of logistic and linear regression analyses, showing univariable and multivariable associations (with IMR>40 in multivariable models) between TRT, and angiogram parameters at the end of PCI.

DERIVATION COHORT				
	Univariable analysis		Multivariable analysis	
	OR/ coefficient	p-value	OR /coefficient	p-value
	(95% CI)		(95% CI)	
<b>Associations with TIMI frame count at the end of PCI*</b>				
TRT continuous	5.68 (2.34, 9.02)	<b>0.001</b>	1.00 (-4.32, 6.31)	0.712
TRT>0.5	3.80 (0.99, 6.61)	<b>0.008</b>	-1.26 (-5.44, 2.91)	0.552
TRT>0.5 (IMR>40, substituted by continuous IMR in model)			-1.95 (-6.00, 2.09)	0.343
<i>*Other variables in multivariable model: IMR&gt;40, CFR≤2, hyperaemic Tmn&gt;median, thermodilution waveform</i>				
<b>Associations with TIMI coronary flow grade ≤2 at the end of PCI†</b>				
TRT continuous	10.24 (3.84, 27.32)	<b>&lt;0.001</b>	8.65 (2.20, 33.99)	<b>0.002</b>
TRT>0.5	7.29 (1.6, 33.25)	<b>0.010</b>	3.06 (0.49, 19.00)	0.231
TRT>0.5 (IMR>, substituted by continuous IMR in model)			1.05 (0.16, 7.03)	0.961
<i>† Other variables in multivariable model: IMR&gt;40</i>				
<b>Associations with myocardial perfusion grade ≤1 at the end of PCI‡</b>				
TRT continuous	3.17 (1.69, 5.95)	<b>&lt;0.001</b>	2.99 (1.57, 5.68)	<b>0.001</b>
TRT>0.5	1.82 (1.06, 3.11)	<b>0.029</b>	1.14 (0.49, 2.62)	0.767
TRT>0.5 (IMR>40, substituted by continuous IMR in model)			0.92 (0.38, 2.12)	0.855
<i>‡Other variables in multivariable model: IMR&gt;40, CFR≤2, hyperaemic Tmn&gt;median, thermodilution waveform</i>				
VALIDATION COHORT				
	Univariable analysis		Multivariable analysis	
	OR/ coefficient	p-value	OR /coefficient	p-value
	(95% CI)		(95% CI)	
<b>Associations with TIMI frame count at the end of PCI*</b>				
TRT continuous	15.18 (10.56, 19.79)	<b>&lt;0.001</b>	12.94 (5.83, 20.05)	<b>&lt;0.001</b>
TRT>0.5	10.98 (6.43, 15.52)	<b>&lt;0.001</b>	5.88 (-0.56, 12.31)	0.073

TRT>0.5 (IMR>40, substituted by continuous IMR in model)	4.94 (-1.41, 11.29)	0.126
--	---------------------	-------

*\*Other variables in multivariable model: IMR>40, CFR≤2, hyperaemic Tmn>median, thermodilution waveform*

#### Associations with TIMI coronary flow grade ≤2 at the end of PCI†

TRT continuous	9.42 (3.32, 26.69)	<b>&lt;0.001</b>	6.65 (1.14, 38.95)	<b>0.038</b>
TRT>0.5	17.55 (2.27, 135.88)	<b>0.006</b>	4.78 (0.48, 47.69)	0.183
TRT>0.5 (IMR>40, substituted by continuous IMR in model)				

† Other variables in multivariable model: IMR>40	5.33 (0.58, 48.58)	0.138
--	--------------------	-------

#### Associations with myocardial perfusion grade ≤1 at the end of PCI‡

TRT continuous	3.30 (1.51, 7.21)	<b>0.003</b>	1.02 (0.33, 3.14)	0.975
TRT>0.5	2.72 (1.28, 5.80)	<b>0.009</b>	0.84 (0.26, 2.74)	0.771
TRT>0.5 (IMR>40, substituted by continuous IMR in model)			0.80 (0.25, 2.53)	0.698

*‡Other variables in multivariable model: IMR>40, CFR≤2, hyperaemic Tmn>median, thermodilution waveform*

Abbreviations: CFR=coronary flow reserve; CI=confidence interval; CMR=cardiovascular magnetic resonance; IMR=index of microcirculatory resistance; MVO=microvascular obstruction; OR=odds ratio; PCI=percutaneous coronary intervention; Tmn=mean transit time; TRT=temperature recovery time

**Supplementary Table 4.** Characteristics for the validation population. Data are mean  $\pm$  SD, or n (%), unless otherwise stated.

Validation Population Characteristics	Overall (n=144)
Age, years	59.4 $\pm$ 10.5
Male	115 (79.9)
Current smoker	68 (47.2)
Body mass index, kg/m <sup>2</sup>	28.4 $\pm$ 5.1
Hypertension	41 (28.5)
Diabetes Mellitus	16 (11.1)
Previous myocardial infarction	8 (5.6)
Presenting heart rate, beats per minute	73.0 $\pm$ 15.1
Presenting systolic blood pressure, mmHg	139.7 $\pm$ 26.1
Ischaemic time, hours, median (IQR)	2.8 (2.0-3.8)
Baseline creatinine, $\mu$ mol/L	79.5 $\pm$ 15.5
<b>Procedural characteristics</b>	
Culprit artery:	
Left anterior descending	54 (37.5)
Circumflex	24 (16.7)
Right coronary artery	66 (45.8)
Number of main vessels diseased	
1	83 (57.6)
2	49 (34.0)
3	12 (8.3)
Thrombus aspiration	23 (16.0)
Glycoprotein IIb/IIIa inhibitor	8 (5.6)
Study drug received:	
Alteplase 20mg	50 (34.7)
Alteplase 10mg	41 (28.5)
Placebo	53 (36.8)



Missing: creatinine, n=1. Abbreviations: IQR=interquartile range; PCI=percutaneous coronary intervention; SD=standard deviation

Copyright EuroIntervention

**Supplementary Table 5.** From the validation population, electrocardiogram, angiogram, and coronary physiology parameters on admission and CMR findings at 2-7 days after PCI for STEMI. Data are mean  $\pm$  SD, or n (%) unless otherwise stated.

Validation Population parameters	Overall (n=144)
<b>Electrocardiogram</b>	
ST-segment resolution:	
Complete, $\geq 70\%$	50 (35.5)
$< 70\%$	91 (64.5)
<b>Angiogram</b>	
Initial TIMI coronary flow grade:	
0	114 (79.2)
1	14 (9.7)
2	16 (11.1)
Final TIMI coronary flow grade:	
1	3 (2.1)
2	15 (10.4)
3	126 (87.5)
TIMI frame count post-PCI, median (IQR)	18.0 (14.0-26.0)
Myocardial perfusion grade post-PCI:	
$\leq 1$	45 (31.3)
$\geq 2$	99 (68.8)
<b>Coronary Physiology Post-PCI</b>	
Pa, mmHg, median (IQR)	76.0 (66.0-86.0)
Pd, mmHg, median (IQR)	69.0 (60.0-78.0)
TRT, median (IQR)	0.5 (0.3-1.0)
TRT $>0.5$	79 (54.9)
IMR, median (IQR)	29.5 (17.0-55.0)
IMR $>32$	69 (47.9)
IMR $>40$	57 (39.6)

CFR, median (IQR)	1.4 (1.1-2.0)
CFR $\leq$ 2	115 (79.9)
Hyperaemic Tmn, median (IQR)	0.4 (0.3-0.8)
Hyperaemic Tmn>median	69 (47.9)
Waveform:	
Bimodal	13 (9.0)
Wide unimodal	56 (38.9)
Wide bimodal	75 (52.1)

#### **CMR 2-7 Days Post-PCI**

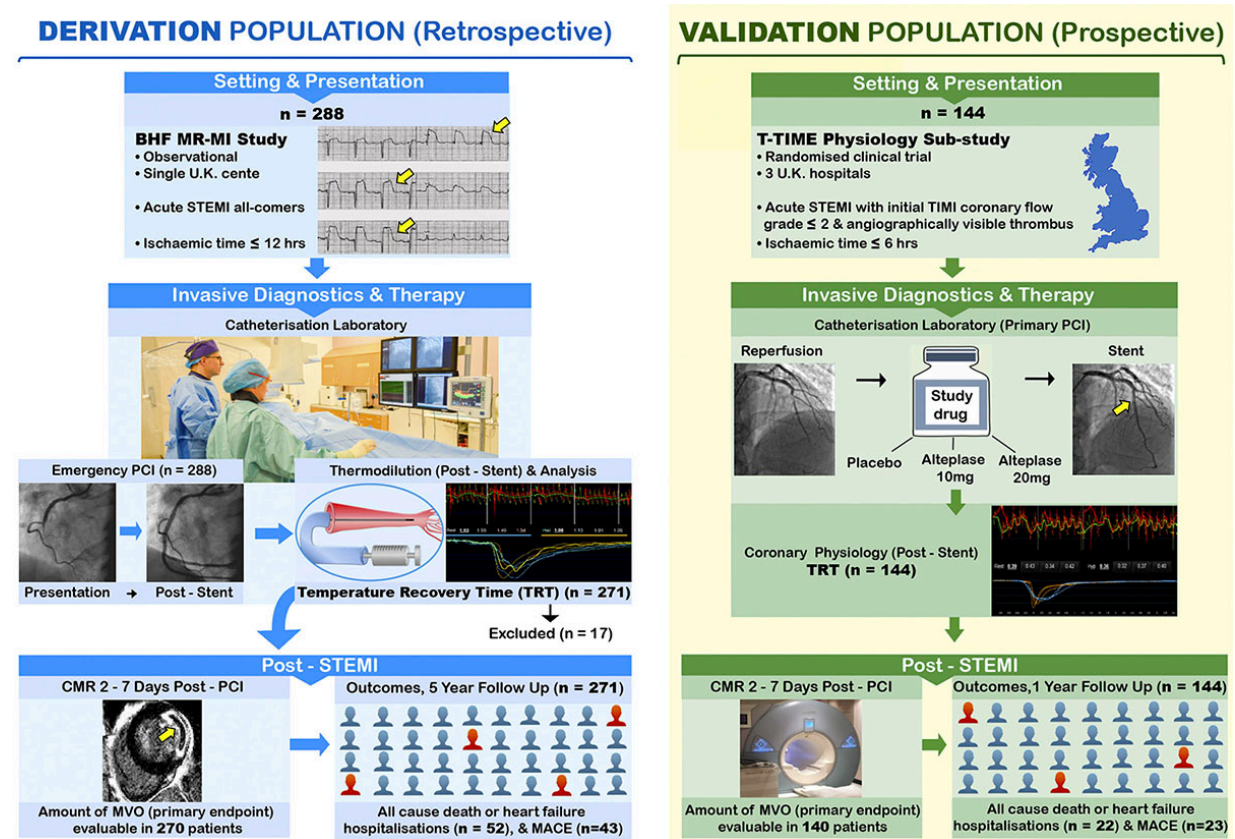
MVO extent (% left ventricular mass)	0.0 (0.0-3.3)
MVO present	57 (41.0)

---

Missing: MVO, n=5; ST-segment resolution, n=3. Abbreviations: CFR=coronary flow reserve; CMR=cardiovascular magnetic resonance; IMR=index of microcirculatory resistance; IQR=interquartile range; MVO=microvascular obstruction; PCI=percutaneous coronary intervention; TIMI=Thrombolysis in Myocardial Infarction; Tmn=mean transit time; TRT=temperature recovery time.

## Supplementary Figure 1.

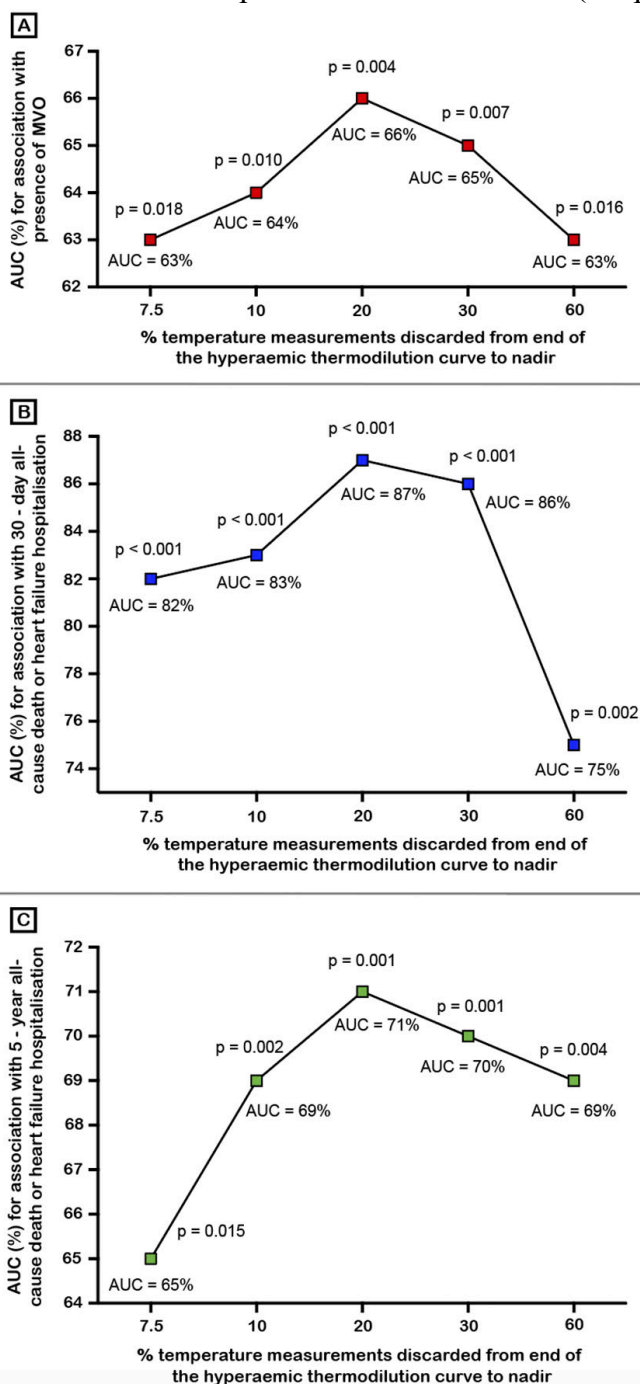
Study design and patients included, for retrospective derivation and prospective validation of TRT (temperature recovery time).



Abbreviations: BHF=British Heart Foundation; CMR=cardiovascular magnetic resonance imaging; PCI=percutaneous coronary interventions; STEMI=ST-segment elevation myocardial infarction; T-TIME=Trial of low-dose adjunctive alteplase during primary PCI.

## Supplementary Figure 2.

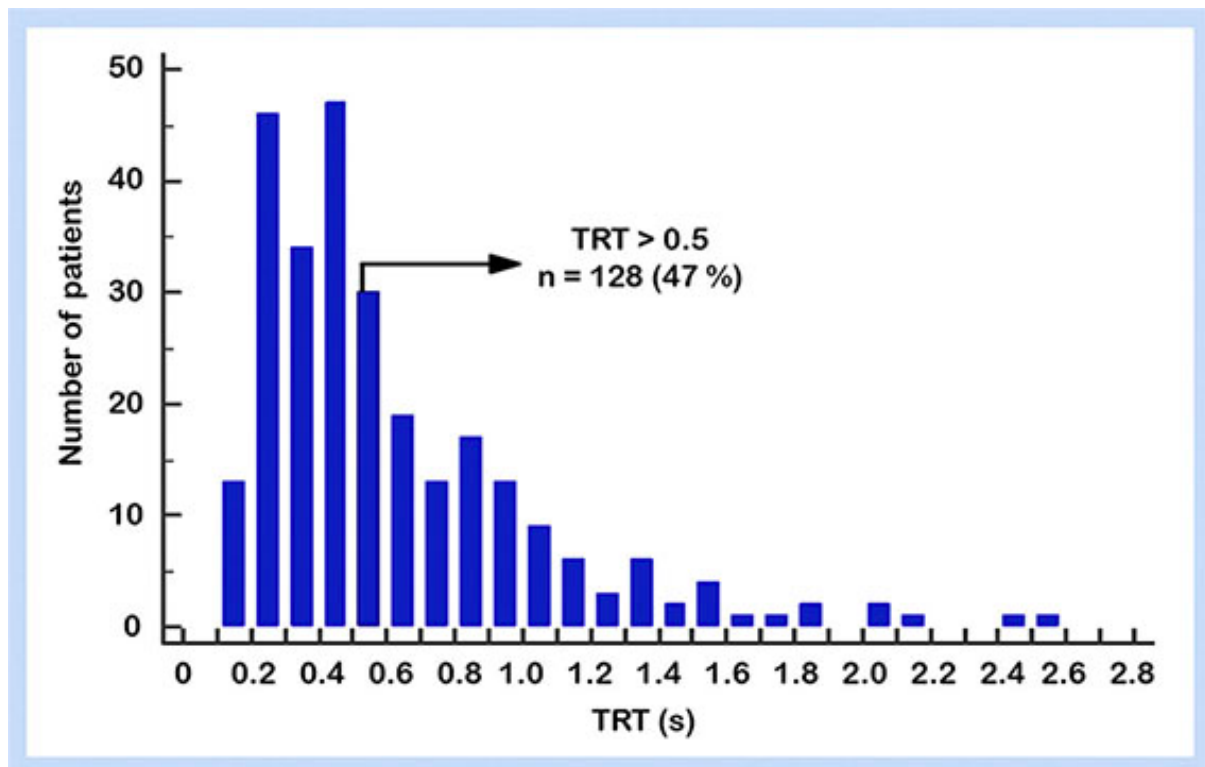
Derivation of the optimal definition for TRT (temperature recovery time).



Data from the first 100 consecutive patients in the derivation cohort. Area under the curves (AUCs) from receiver operating characteristic curve analyses, for predicting: **(A)** microvascular obstruction (MVO) presence/ absence; **(B)** 30-day all-cause death/ heart failure hospitalisation, and; **(C)** 5-year all-cause death/ heart failure hospitalisation. Five different thresholds from the end of the thermodilution curve (i.e. 7.5%, 10%, 20%, 30% and 60%), were used to calculate durations of the thermodilution recovery curve (in seconds) from nadir temperature. The dots represent AUCs. The mean was calculated from 3 hyperaemic thermodilution curves for each percentage threshold (i.e. 7.5%, 10%, 20%, 30% and 60%).

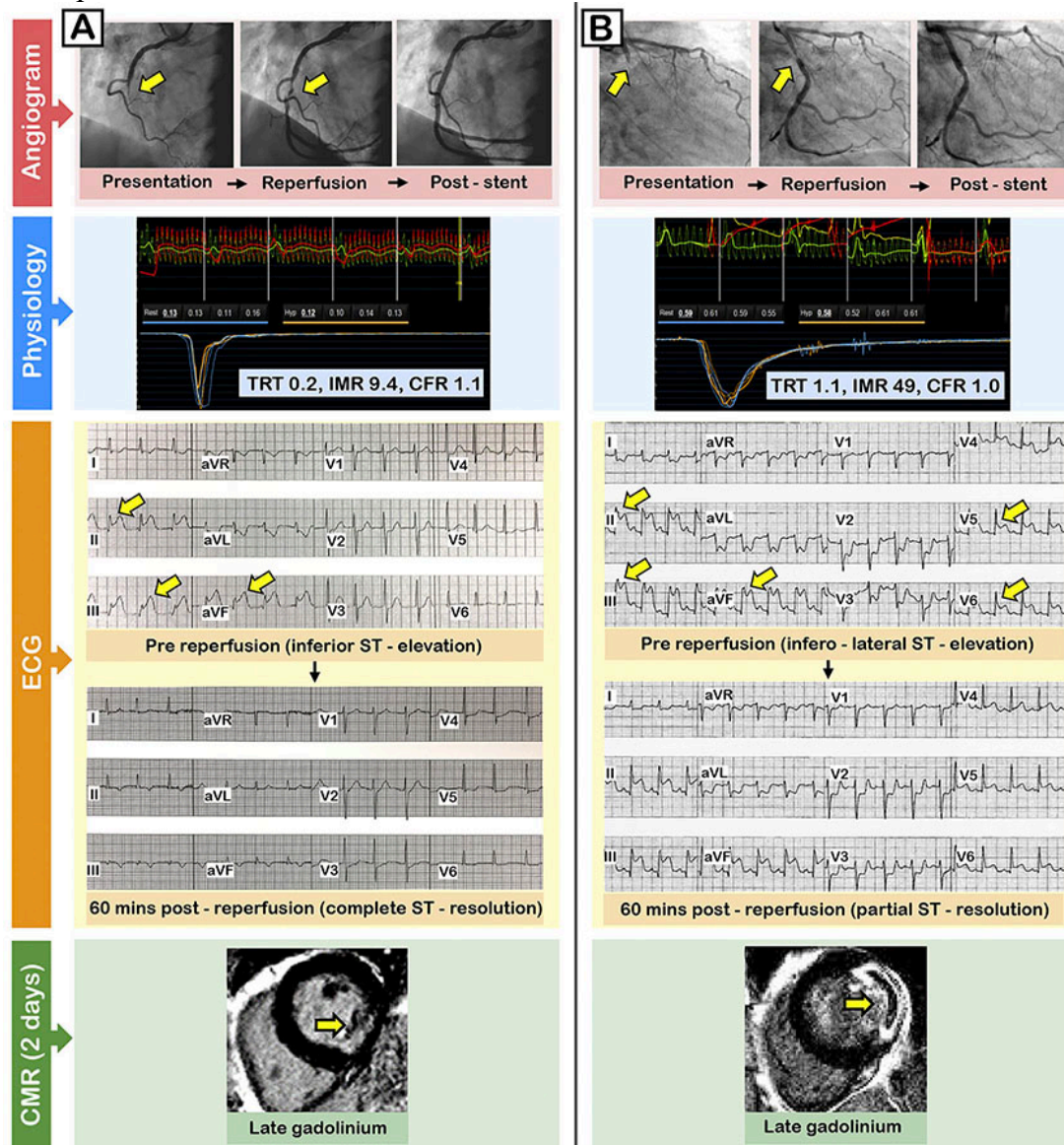
### Supplementary Figure 3.

From the derivation population, distribution of TRT (temperature recovery time) (n=271).



## Supplementary Figure 4.

Examples of clinical cases.

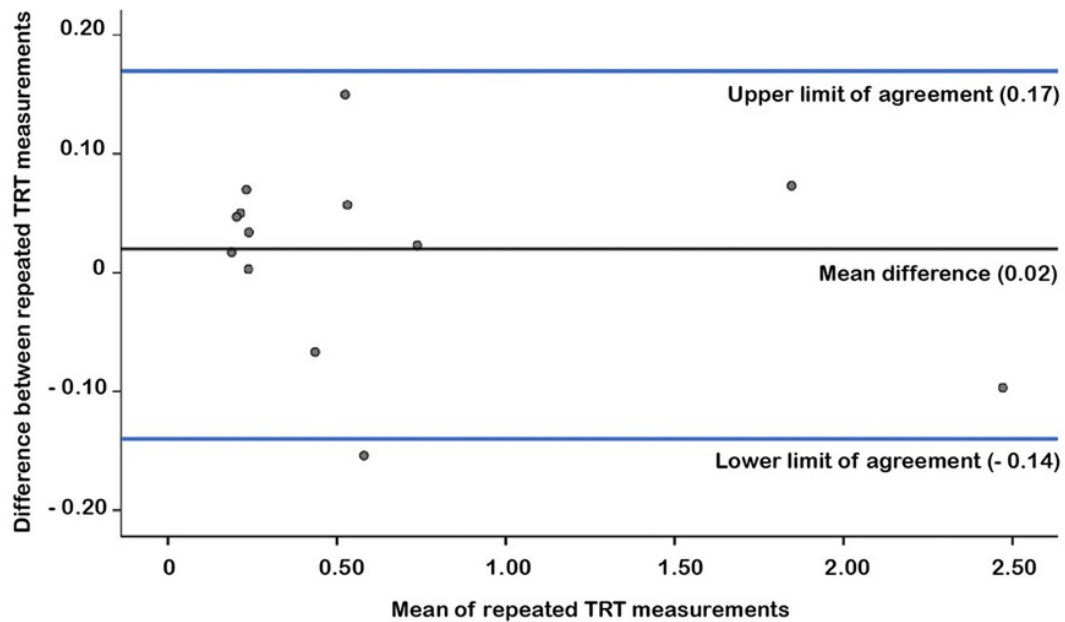


Two patients with acute STEMI (ST-segment elevation myocardial infarction), treated by primary percutaneous coronary intervention (PCI). Both patients had TIMI (Thrombolysis in myocardial Infarction) coronary flow grade 3 in the culprit artery, post-PCI. **A**, Normal TRT (temperature recovery time): The culprit was an occluded right coronary artery. IMR (index of microcirculatory resistance) and TRT were normal, indicating successful myocardial reperfusion. ECGs (electrocardiograms) showed complete resolution of inferior ST-segment elevation. CMR (cardiovascular magnetic resonance) imaging performed 2-days post STEMI revealed a small subendocardial infarct without MVO (microvascular obstruction). **B**, Increased TRT: The culprit was an occluded circumflex artery. Invasively measured microvascular function was abnormal (IMR 49, TRT 1.1), indicating impaired myocardial reperfusion. ECGs showed only partial resolution of infero-lateral ST-segment elevation. Two days later CMR imaging revealed MVO. Abbreviation: CFR=coronary flow reserve.



### Supplementary Figure 5.

Bland-Altman plot of differences plotted against the averages of paired TRT measurements after primary-PCI, obtained by 4 different cardiologists in 13 patients.



Horizontal lines are drawn at the mean difference and at the limits of agreement.