



## Abbreviations

<b>AS</b>	aortic stenosis
<b>(C)ICU</b>	(coronary) intensive care unit
<b>FAST-TAVI</b>	Feasibility And Safety of early discharge after Transfemoral TAVI
<b>IQR</b>	interquartile range
<b>NYHA</b>	New York Heart Association
<b>PPI</b>	permanent pacemaker implantation
<b>PVL</b>	paravalvular leak
<b>RBC</b>	red blood cell
<b>SD</b>	standard deviation
<b>TAVI</b>	transcatheter aortic valve implantation
<b>TIA</b>	transient ischaemic attack

## Introduction

TAVI is an established treatment for severe symptomatic aortic stenosis<sup>1</sup>. Current treatment pathways result in a mean duration of hospitalisation of between six and seven days in France to 16 days in Belgium<sup>2,3</sup>.

The adoption of well-standardised TAVI-specific clinical care pathways can help to identify suitable candidates for early discharge without complications<sup>3-5</sup>. In selected patients deemed as being at low risk for complications, there is no increase in 30-day mortality, disabling stroke, bleeding, permanent pacemaker implantation (PPI) or readmission when discharged early<sup>3,5</sup>. Furthermore, appropriate early discharge has been demonstrated to improve patient outcomes and quality of life after surgical and interventional procedures. In fact, over the last decade, the duration of hospitalisation after TAVI has steadily decreased<sup>3</sup>.

It is, however, obvious that neither a generally minimised length of stay (LoS) nor a standard prolongation of hospitalisation appropriately considers individual patient characteristics and medical needs. Optimising the LoS needs to result in a balance of the potential benefits of early discharge (reduced hospital-borne complications, accelerated patient recovery and mobilisation, lower costs) and the potential benefits of late discharge which are related to the timely detection and appropriate treatment of infrequent complications such as arrhythmia as well as vascular and bleeding complications in the hospital setting<sup>6,7</sup>.

The rationale for further investigating the optimisation of LoS post-TAVI was born from the desire to define a standardised set of risk criteria that allows a safe and timely discharge, to validate their appropriateness prospectively in different centres and multiple European countries, and to assess post-discharge outcomes.

Editorial, see page 131

## Methods

The FAST-TAVI registry is an observational, prospective, multi-centre project. It has been conducted at five sites in Italy, two sites in the Netherlands and three sites in the UK. All centres involved had no administrative restrictions and reimbursement issues potentially affecting post-procedural LoS<sup>8</sup>. The registry was approved by the independent ethics review board at each of the participating institutions and all patients provided written informed consent.

## PATIENT SELECTION

In brief, patients undergoing transfemoral TAVI with the SAPIEN 3 transcatheter heart valve (Edwards Lifesciences, Irvine, CA, USA) were enrolled. Valve selection was restricted according to the potential bias introduced by different valves on the rate of PPI or other relevant complications. Catania was the first centre to enrol patients starting in May 2015 while Cambridge started enrolment in May 2017. Patients were enrolled until the recruitment goal of a mean of 50 patients per centre was reached in November 2017. The decision to perform the procedure, as well as the date of patient discharge, was made by the local team at each institution adhering to medical judgement and standard local practice.

## DISCHARGE CRITERIA

According to the protocol, a list of pre-specified criteria was considered after TAVI to define a low risk of complications after early discharge, including NYHA Class  $\leq$ II, no chest pain attributable to cardiac ischaemia, no untreated major arrhythmias, patients having complications on day 0 to 1, but free of signs or symptoms on day 3, no fever during the last 24 hours and no signs of an infectious cause, independent mobilisation and self-caring, preserved diuresis ( $>40$  ml/hour during the preceding 24 hours), no unresolved acute kidney injury type 3 (according to VARC-2 criteria), no red blood cell (RBC) transfusion during the preceding 72 hours, stable haemoglobin in two consecutive samples (defined as a decrease of no more than 2 mg/dl), no paravalvular leak (PVL) with aortic regurgitation less than moderate, no stroke/transient ischaemic attack (TIA), and no haemodynamic instability.

## OBJECTIVES

The primary objective of the study was to determine the incidence of a composite of VARC-2 defined all-cause mortality, vascular access-related complications, PPI, stroke, re-hospitalisation due to cardiac reasons, kidney failure and major bleeding, occurring during the first 30 days after hospital discharge. The secondary objective prospectively tested a set of pre-specified risk criteria for out-of-hospital complications after early discharge ( $\leq 72$  hours) post-procedure.

## STATISTICAL ANALYSIS

The data are presented descriptively, using means with standard deviation (SD), medians with interquartile range (IQR) or absolute values with percentages. Comparisons were made using a Pearson's chi-square or Fisher's exact test for categorical variables. For continuous variables, a t-test or Mann-Whitney-Wilcoxon rank-sum test, and ANOVA for comparison of more than three groups was used. A p-value of  $<0.05$  was considered statistically significant. Statistical analysis was performed using SPSS, Version 24.0 (IBM Corp., Armonk, NY, USA).

## Results

### PATIENT CHARACTERISTICS AND PROCEDURAL DETAILS

Between May 2015 and October 2017, a total of 502 patients were enrolled, of whom 499 underwent a procedure (**Figure 1**).

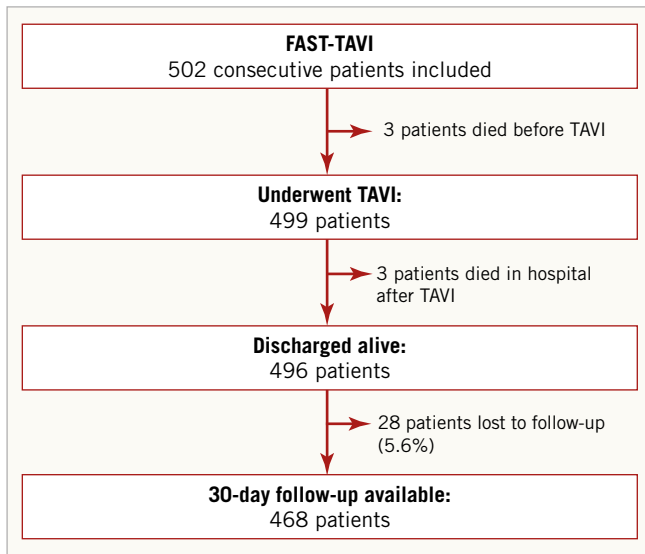


Figure 1. Patient flow chart.

Patients undergoing TAVI (n=499) had a mean age of 81.4±6.0 years, 48.2% were female and the mean EuroSCORE II was 5.0±6.0% (**Supplementary Table 1**). A minority of patients had undergone prior cardiovascular intervention. More than half of the study population were in NYHA Class III/IV (53.3%) and 5.0% had angina CCS III/IV.

Overall, 82.8% of patients underwent transfemoral TAVI with conscious sedation or local analgesia. Three patients (0.6%) required the use of a second valve during the TAVI procedure. Five patients required conversion to open heart surgery (1.0%).

### ACTUAL DISCHARGE MANAGEMENT BASED ON RISK

After the TAVI procedure, 68.6% of patients were admitted to the coronary intensive care unit (CICU), 18.8% to an intermediate care unit and 12.6% directly to the general ward (**Supplementary Table 2**). Overall, three patients died in-hospital post-TAVI (0.6%) and 99.4% (496/499) were discharged (**Table 1**). The median LoS was 2 (IQR 1-4) days. Of the patients who were discharged, 26.8% (n=133) were discharged within one day, 51.0% (n=253) within two days and 72.6% (n=360) within three days. The majority of patients were discharged home (79.0%) with the other patients mostly being transferred to the referring hospital.

A total of 71.0% of patients with low-risk criteria for complications after discharge were actually discharged early; 23.5% were assessed as being high-risk for complications and were discharged late (resulting in an appropriate discharge rate of 94.5%). Discordant discharge (time to discharge inconsistent with the specified risk of discharge) was only seen in 5.5% of patients, comprising high-risk for out-of-hospital complications but still discharged early in 1.2% of patients and discharged late despite being at low risk in 4.3% of patients (**Figure 2**). The principal reasons for a prolonged hospitalisation (>72 hours) included logistical reasons (34.8%), conduction disturbances (25.9%) and bleeding complications (16.3%). Other

Table 1. In-hospital course (n=499) and discharge timing of those with an intervention and being discharged alive (n=496).

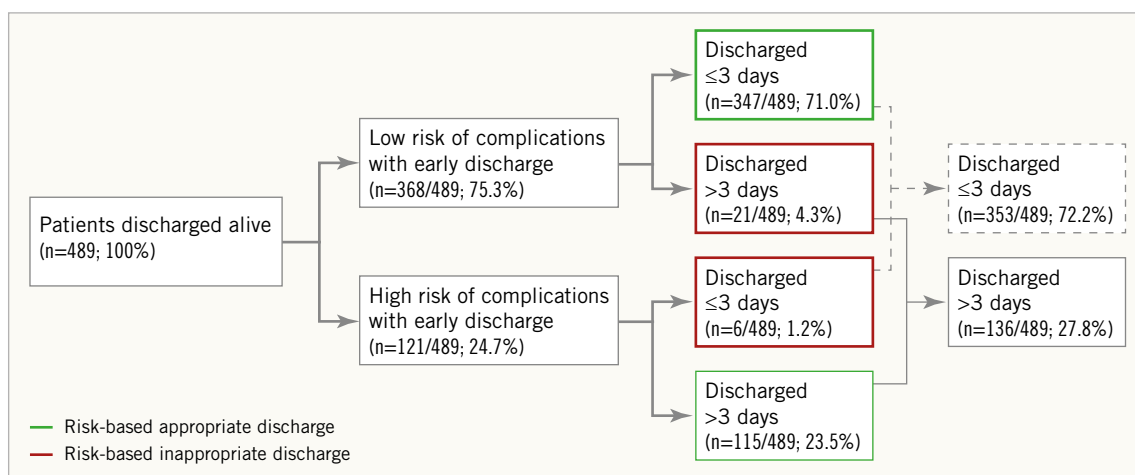
		n/N (%) or median [IQR]
Transfer after the procedure	Cardiac intensive care unit	339/494 (68.6)
	Length of CICU stay (hours)	4 [0; 24]
	Intermediate care unit	93/494 (18.8)
	Length of intermediate care (days)	0 [0; 1]
	General ward	62/494 (12.6)
Length of hospital stay (days)		2 [1; 4]
In-hospital death		3/499 (0.6)
Discharged		496/499 (99.4)
Discharge from the implanting hospital (%)	≤24 hours	133/496 (26.8)
	≤48 hours	253/496 (51.0)
	≤72 hours	360/496 (72.6)
	>72 hours	136/496 (27.4)
Discharge direction	Home	391/495 (79.0)
	Another (referring) hospital	80/495 (16.2)
	Extended care	1/495 (0.2)
	Rehabilitation	20/495 (4.0)
	Nursing home	3/495 (0.6)
Reasons for not being discharged ≤72 hours*,**	Logistic reasons	47/135 (34.8)
	Conduction disturbance	35/135 (25.9)
	Bleeding	22/135 (16.3)
	Mobilisation	20/135 (14.8)
	Renal	14/135 (10.4)
	Vascular	13/135 (9.6)
	Other reasons	20/135 (27.4)

\*Data for 1 patient not available; \*\*more than one reason possible. CICU: cardiac intensive care unit; IQR: interquartile range

predefined reasons also cited as a reason for prolonged hospitalisation included delayed mobilisation as well as renal and vascular complications (**Table 1**). The principal reason for late discharge in the 20 patients considered to be at low risk of complications was logistics (17/20; 85.0%). Two further patients were kept in hospital due to “mobilisation problems” (2/20; 10.0%) and one patient because of “vascular problems” (1/20; 5.0%).

### THIRTY-DAY OUTCOMES AS A RESULT OF PREDEFINED DISCHARGE CRITERIA

Of the 496 patients discharged alive (**Figure 1**), 468 were available for the 30-day follow-up (94.4%). The primary endpoint was reached in 12.9% of patients (95% CI: 11.3-16.5). The overall 30-day mortality was 1.1%, and the rates of stroke/TIA 1.7%, PPI 7.3%, major vascular complications 1.9%, major/life-threatening bleeding 2.4% and cardiac re-hospitalisation 3.7% (**Table 2**). Of those re-hospitalised, 4.8% had valve-related reasons, 9.5% were admitted because of worsening heart failure, 40.5% had other cardiac reasons and 54.8% were not considered cardiac (two patients with TIA, one patient with bleeding complications, the others being unrelated).



**Figure 2.** Patient discharge by risk. Includes all patients alive at discharge; excludes seven patients for whom risk status at discharge was unknown. Definitions for high and low risk complications: see Methods section. Green, desired discharge based on risk; red, undesirable discharge based on risk.

**Table 2.** 30-day outcomes of those discharged alive and with a 30-day follow-up available.

	Total	% with 95% CI
Primary endpoint*	61/474	12.9 (11.3-16.5)
Overall mortality	5/467	1.1 (0.2-2.0)
Stroke/TIA	8/468	1.7 (-0.6-4.0)
Stroke	4/468	0.9 (-1.7-3.5)
TIA	4/468	0.9 (-1.7-3.5)
New PPI	34/466	7.3 (5.8-8.9)
Kidney failure	2/466	0.4 (-1.4-2.2)
Major vascular complications	9/467	1.9 (0.7-3.1)
Major/life-threatening bleeding	11/467	2.4 (1.0-3.8)
Re-hospitalisation (any reason)	45/467	9.6 (7.5-11.8)
Re-hospitalisation (cardiac reason)	17/465	3.7 (1.4-6.0)

\*the primary endpoint and objective of the study was to determine the incidence of a composite of all-cause mortality, vascular access-related complications, PPI, stroke, re-hospitalisation due to cardiac reasons, kidney failure and major bleeding, occurring during the first 30 days after hospital discharge. PPI: permanent pacemaker implantation; TIA: transient ischaemic attack

Patients discharged early because of a perceived low risk of complications (**Table 3**) actually had a significantly lower risk of the primary endpoint (7.0 vs. 26.4%;  $p < 0.001$ ), which was reflected in some of its relevant components: stroke (0 vs. 2.8%), PPI (4.3 vs. 15.9%), major vascular complications (0.3 vs. 4.7%) and major/life-threatening bleeding (0.3 vs. 6.5%). A comparison of out-of-hospital events is provided in **Supplementary Table 3**. No significant increase in the rate of out-of-hospital adverse events was noted with early discharge in patients at low risk of complications. A separation of patients with low risk and early discharge into those discharged within one, two or three days revealed a nominal risk increase for the primary endpoint and for the rate of re-hospitalisation in those discharged very early (**Table 4**).

### COUNTRY-SPECIFIC DIFFERENCES

More patients were enrolled in Italy ( $n=264$ ) than in the Netherlands ( $n=127$ ) and UK ( $n=111$ ). In the Italian group, three patients died prior to the TAVI procedure. Overall, three patients died in hospital (one patient in the Italian group and two patients in the UK group). In the Dutch and UK groups, 51.2% and 49.5% of patients were discharged post TF-TAVI within 24 hours, compared with only 5.4% of patients in the Italian group (**Supplementary Table 4**). The majority of all patients had early discharge (ED) ( $\leq 72$  hours) – 61.9% of patients in Italy, 80.3% of Dutch patients and 89.0% of patients in the UK.

Most patients were discharged home in Italy (92.3%) and the UK (93.6%), while many patients were transferred back to the referring hospital in the Netherlands (58.3%) (both  $p < 0.001$  across groups).

There were no statistically significant differences in the primary outcome at 30 days among the three countries. The rate of re-hospitalisation was, however, higher in the Netherlands (14.9%) and UK (13.3%) compared to Italy (5.7%) ( $p=0.006$ ). Re-hospitalisation for cardiac reasons was substantially higher in the Netherlands (12.3%) than in Italy (0%) and the UK (2.9%) ( $p < 0.001$ ).

Clinical events at 30 days of those actually discharged were low in general, but there were between-country differences in pacemaker rates (lowest 1.9% in the UK) and re-hospitalisation (lowest 5.7% in Italy).

### Discussion

A predefined set of risk criteria was able to guide discharge decisions appropriately for patients undergoing TF-TAVI with a balloon-expandable valve in multiple centres across Europe. The criteria allowed the appropriate selection of patients eligible for early discharge because of a low risk of out-of-hospital complications as well as the identification of those patients most probably

**Table 3. 30-day outcomes based on four different risk and discharge categories.**

30-day outcomes	Concordant discharge			Discordant discharge	
	Low risk of complications & discharged ≤3 days	High risk of complications & discharged >3 days	p-value	High risk of complications & discharged ≤3 days	Low risk of complications & discharged >3 days
Primary endpoint*	23/328 (7.0)	29/110 (26.4)	<0.001	2/6 (33.3)	3/20 (15.0)
Overall mortality	2/326 (0.6)	0/106 (0)	1.000	1/6 (16.7)	0/19 (0)
Stroke/TIA	4/326 (1.2)	3/107 (2.8)	0.371	1/6 (16.7)	0/19 (0)
Stroke	0/326 (0)	3/107 (2.8)	0.015	1/6 (16.7)	0/19 (0)
TIA	4/326 (1.2)	0/107 (0)	0.576	0/6 (0)	0/19 (0)
PPI	14/325 (4.3)	17/107 (15.9)	<0.001	0/6 (0)	2/20 (10.0)
Kidney failure	0/325 (0.0)	1/106 (0.9)	0.246	0/6 (0)	0/19 (0)
Major vascular complications	1/325 (0.3)	5/107 (4.7)	0.004	0/6 (0)	0/19 (0)
Major/life-threatening bleeding	1/325 (0.3)	7/107 (6.5)	<0.001	0/6 (0)	0/19 (0)
Re-hospitalisation (any reason)	29/327 (8.6)	12/107 (11.2)	0.471	1/6 (16.7)	2/19 (10.5)
Re-hospitalisation (cardiac reason)	11/326 (3.4)	3/106 (2.8)	1.000	1/6 (16.7)	1/19 (5.3)

\*The primary endpoint and objective of the study was to determine the incidence of a composite of all-cause mortality, vascular access-related complications, PPI, stroke, re-hospitalisation due to cardiac reasons, kidney failure and major bleeding, occurring during the first 30 days after hospital discharge. PPI: permanent pacemaker implantation; TIA: transient ischaemic attack

benefiting from a longer hospitalisation. An optimised discharge strategy appeared to be associated with a low rate of adverse events and a low re-hospitalisation rate.

#### DISCHARGE CRITERIA

The potential for the optimisation of hospital discharge after TAVI has previously been investigated in a single centre<sup>3,4,9</sup> and one multicentre study<sup>10</sup>. The first<sup>3</sup> was a retrospective analysis from Italy where factors indicating low risk for early discharge (≤3 days) were identified from multivariable analysis. The second<sup>4</sup> reported on the feasibility of safe early discharge (≤3 days) of patients who had undergone TAVI. The primary endpoint (death and

re-hospitalisation at 30 days) was reached in a comparable number of patients in the early and late discharge groups. The investigators analysed predictive factors of early discharge using multivariable analysis of the baseline criteria. The third publication<sup>9</sup> prospectively assessed the eligibility for discharge after TF-TAVI within 72 hours. Fifty-nine percent (59%) were discharged early. This was considered safe as the mortality was one in 130 patients at 30 days and three (4%) were re-hospitalised.

Based on the evidence described above, a prospective assessment of predefined early discharge criteria was warranted to optimise post-TAVI outcomes. However, an approach different from the recently presented 3M TAVR study was chosen<sup>10</sup>.

**Table 4. 30-day outcomes based on actual discharge decision (n=468).**

30-day outcomes	Low risk of complications & discharged day 1	Low risk of complications & discharged day 2	Low risk of complications & discharged day 3	p-value (comparison of discharge time)	Any patient discharged >3 days
Primary endpoint *	12/122 (9.8)	4/115 (3.5)	7/91 (7.7)	0.187	32/130 (24.6)
Overall mortality	2/121 (1.7)	0/115 (0.0)	0/90 (0.0)	0.336	0/125 (0.0)
Stroke/TIA	2/121 (1.7)	2/115 (1.7)	0/90 (0.0)	0.562	3/126 (2.4)
Stroke	0/121 (0.0)	0/115 (0.0)	0/90 (0.0)	n.a.	3/126 (2.4)
TIA	2/121 (1.7)	2/115 (1.7)	0/90 (0.0)	0.562	0/126 (0.0)
PPI	5/120 (4.2)	3/115 (2.6)	6/90 (6.7)	0.352	19/127 (15.0)
Kidney failure	0/120 (0.0)	0/115 (0.0)	0/90 (0.0)	n.a.	1/125 (0.8)
Major vascular complications	1/120 (0.8)	0/115 (0.0)	0/90 (0.0)	1.000	5/126 (4.0)
Major/life-threatening bleeding	1/120 (0.8)	0/115 (0.0)	0/90 (0.0)	0.738	7/126 (5.6)
Re-hospitalisation (any reason)	16/122 (13.1)	7/115 (6.1)	6/90 (6.7)	0.113	14/126 (11.1)
Re-hospitalisation (cardiac reason)	8/122 (6.6)	1/114 (0.9)	2/90 (1.1)	0.344	4/125 (3.2)

\*The primary endpoint and objective of the study was to determine the incidence of a composite of all-cause mortality, vascular access-related complications, PPI, stroke, re-hospitalisation due to cardiac reasons, kidney failure and major bleeding, occurring during the first 30 days after hospital discharge. PPI: permanent pacemaker implantation; TIA: transient ischaemic attack

The 3M study excluded a significant number of patients not meeting predefined criteria with regard to life expectancy, computed tomography (CT) quality, vascular access, iliofemoral artery size, clinical stability and mobilisation, language skills, level of social support, cognitive function, and airway anatomy. In contrast, FAST TAVI included unselected patients undergoing transfemoral TAVI with SAPIEN 3, where individual patient risk and the actual risk of complications with early or late discharge was assessed after the intervention. The post-interventional assessment was then compared to the actual discharge pattern and 30-day outcomes analysed. Our two groups (low risk and early discharge, and low risk and late discharge) would be comparable with those included in the 3M study, while our high-risk patients would have been excluded from 3M.

## OUTCOMES

Clinical outcomes after TF-TAVI have steadily improved over time. Major studies and registries<sup>11,12</sup> published in recent years (2014 to 2016) report 30-day rates of mortality as low as 1.1 to 5.1%, stroke rates of 1.7 to 6.4%, cardiac readmission rates of 4.3 to 6.5% and new pacemaker rates of 8.5 to 27.0%. Reported rates for 3M were at the lower end of this range (1.5%, 1.5%, 5.7%, and 5.7%, respectively)<sup>10</sup> but were the result of the aforementioned selection of lower-risk patients in the trial. Our event rates in an unselected patient population (including those with high risk of complications when discharged early) confirmed the adequacy of our predefined discharge criteria in that rates of mortality at 30 days (1.1%), stroke (1.7%), re-hospitalisation for cardiac reasons (3.7%), and new pacemaker (7.3%) were all lower than in the unselected large registries referred to above. A word of caution is warranted, however, as strategies to recognise the need for pacemaker implantation early before may decrease PPI after TAVI.

We further explored the pre-specified discharge criteria and showed that the majority (>70%) of patients undergoing TF-TAVI can be safely discharged within three days post intervention if this set of pre-specified criteria is applied. Furthermore, our study indicates that patients at low risk of post-discharge complications are actually at a very low risk of death, re-hospitalisation, PPI, major vascular complications and life-threatening bleeding, even below the above-mentioned rates. While delayed discharge is medically mandated for some patients, for approximately one third of patients delayed discharge was due to logistical (non-medical) reasons.

## COUNTRY ANALYSIS

Our study also confirms that timely discharge of patients who have undergone TF-TAVI can be performed safely in different European geographies (80.3% of patients in the Netherlands and 89.0% of patients in the UK). A lower percentage of patients (61.9%) was discharged early in the Italian cohort, which is probably due to the fact that those patients were sicker at study enrolment (including a higher percentage of patients in NYHA Class III/IV and patients with higher aortic valve [AV] peak and mean gradients) and were

more frequently discharged home rather than to a referring hospital as documented for the Netherlands.

While the multinational nature of this study is a key advantage as it increases the applicability of our findings to other countries, it has to be noted that differences in the healthcare systems might have an impact on LoS after TAVI. It is also possible that there could be variations in patient management and treatment between institutions within the same country. There is a further project underway in France (ClinicalTrials.gov Identifier: NCT02956915) to determine average LoS post TF-TAVI. The results of the French study may add further support to the development of guidance for specific discharge criteria post TF-TAVI.

## Limitations

While patients were unselected with respect to their potential risk after discharge, inclusion was restricted to patients undergoing TF-TAVI using the Edwards SAPIEN 3 valve. A specific valve and access route were mandated in the protocol as different valves are associated with, for example, differing pacemaker rates and this is one of the key early discharge criteria. Centres participating started recruiting patients at different time points, resulting in a prolonged recruitment period spanning three years. This may have resulted in a loss of consecutiveness but will not interfere with the objective of the study. Finally, as in every registry, data completeness may not be achievable for every variable, but in this study the key variables for the current manuscript were available in >90% of patients.

## Conclusions

The FAST-TAVI registry validated the appropriateness of a pre-specified set of risk criteria that allow a safe and timely discharge. The rate of 30-day complications did not reveal any risk increase with this strategy compared with the reported outcomes in major TAVI trials and registries.

### Impact on daily practice

The data support previous findings that, in selected patients, optimising discharge post TAVI is feasible, safe and beneficial to the patient<sup>13</sup>. As LoS appears to be an important contributor to the overall cost of the procedure<sup>2</sup>, a decrease would be associated with a significant decrease in treatment costs<sup>6,7</sup>. As well as being medically advantageous for patients, optimising LoS would reduce procedure-related and resource utilisation costs as well as other risks associated with prolonged hospitalisation<sup>14</sup>. In order to facilitate optimised timely discharge, the logistics of patient discharge should be planned in advance of the patient admission.

## Acknowledgements

Data were captured using the s4trials software provided by Software for Trials Europe GmbH, Berlin, Germany. F. Iacovelli is currently attending the Cardiopath PhD programme. The authors wish to thank

Rodolfo Estay, Sandra Lauck, David Wood, Michelle McEvoy, and Lenka Sykorova for their tremendous help with the study.

## Funding

This work was funded by a research grant provided by Edwards Lifesciences (Nyon, Switzerland) to the Institute for Pharmacology and Preventive Medicine (IPPMed).

## Appendix. Study collaborators

Jan Baan, MD; *Cardiology Department, Amsterdam UMC, University of Amsterdam, the Netherlands.* Jana Kurucova, MD; *Edwards Lifesciences, Nyon, Switzerland.* Martin Thoenes, MD; *Edwards Lifesciences, Nyon, Switzerland.* Claudia M. Lüske, PhD; *Institute for Pharmacology and Preventive Medicine, Cloppenburg, Germany.* Cornelia Deutsch, MD; *Institute for Pharmacology and Preventive Medicine, Cloppenburg, Germany.* Giuliano Costa, MD; *Cardiology Department, Policlinico-Vittorio Emanuele Hospital, University of Catania, Italy.* Colum G. Owens, MD; *Cardiology Department, Royal Victoria Hospital, Belfast, United Kingdom.*

## Conflict of interest statement

P. Bramlage represents IPPMed, Cloppenburg. M. Barbanti is a consultant for Edwards and advisory board member for Medtronic. M. Spence is a proctor and consultant for Edwards. D. Muir is a proctor for Edwards. The other authors have no conflicts of interest to declare.

## References

- Makkar RR, Fontana GP, Jilalawi H, Kapadia S, Pichard AD, Douglas PS, Thourani VH, Babaliaros VC, Webb JG, Herrmann HC, Bavaria JE, Kodali S, Brown DL, Bowers B, Dewey TM, Svensson LG, Tuzcu M, Moses JW, Williams MR, Siegel RJ, Akin JJ, Anderson WN, Pocock S, Smith CR, Leon MB; PARTNER Trial Investigators. Transcatheter aortic-valve replacement for inoperable severe aortic stenosis. *N Engl J Med.* 2012;366:1696-704.
- Awad W, Mathur A, Baldock L, Oliver S, Kennon S. Comparing post-operative resource consumption following transcatheter aortic valve implantation (TAVI) and conventional aortic valve replacement in the UK. *J Med Econ.* 2014;17:357-64.
- Barbanti M, Capranzano P, Ohno Y, Attizzani GF, Gulino S, Imme S, Cannata S, Aruta P, Bottari V, Patanè M, Tamburino C, Di Stefano D, Deste W, Giannazzo D, Gargiulo G, Caruso G, Sgroi C, Todaro D, di Simone E, Capodanno D, Tamburino C. Early discharge after transfemoral transcatheter aortic valve implantation. *Heart.* 2015;101:1485-90.
- Durand E, Eltchaninoff H, Canville A, Bouhazam N, Godin M, Tron C, Rodriguez C, Litzler PY, Bauer F, Cribier A. Feasibility and safety of early discharge after transfemoral transcatheter aortic valve implantation with the Edwards SAPIEN-XT prosthesis. *Am J Cardiol.* 2015;115:1116-22.
- Lauck SB, Wood DA, Baumbusch J, Kwon JY, Stub D, Achtem L, Blanke P, Boone RH, Cheung A, Dvir D, Gibson JA, Lee B, Leipsic J, Moss R, Perlman G, Polderman J, Ramanathan K, Ye J, Webb JG. Vancouver Transcatheter Aortic Valve Replacement Clinical Pathway: Minimalist Approach, Standardized Care, and Discharge Criteria to Reduce Length of Stay. *Circ Cardiovasc Qual Outcomes.* 2016;9:312-21.
- Reynolds MR, Magnuson EA, Wang K, Lei Y, Vilain K, Walczak J, Kodali SK, Lasala JM, O'Neill WW, Davidson CJ, Smith CR, Leon MB, Cohen DJ; PARTNER Investigators. Cost-effectiveness of transcatheter aortic valve replacement compared with standard care among inoperable patients with severe aortic stenosis: results from the placement of aortic transcatheter valves (PARTNER) trial (Cohort B). *Circulation.* 2012;125:1102-9.
- Reynolds MR, Magnuson EA, Lei Y, Wang K, Vilain K, Li H, Walczak J, Pinto DS, Thourani VH, Svensson LG, Mack MJ, Miller DC, Satler LE, Bavaria J, Smith CR, Leon MB, Cohen DJ; PARTNER Investigators. Cost-effectiveness of transcatheter aortic valve replacement compared with surgical aortic valve replacement in high-risk patients with severe aortic stenosis: results of the PARTNER (Placement of Aortic Transcatheter Valves) trial (Cohort A). *J Am Coll Cardiol.* 2012;60:2683-92.
- Barbanti M, Baan J, Spence MS, Iacovelli F, Martinelli GL, Saia F, Bortone AS, van der Kley F, Muir DF, Densem CG, Vis M, van Mourik MS, Seilerova L, Luske CM, Bramlage P, Tamburino C. Feasibility and safety of early discharge after transfemoral transcatheter aortic valve implantation - rationale and design of the FAST-TAVI registry. *BMC Cardiovasc Disord.* 2017;17:259.
- Serletis-Bizios A, Durand E, Cellier G, Tron C, Bauer F, Glinel B, Dacher JN, Cribier A, Eltchaninoff H. A Prospective Analysis of Early Discharge After Transfemoral Transcatheter Aortic Valve Implantation. *Am J Cardiol.* 2016;118:866-72.
- Wood DA, Lauck SB, Cairns JA, Humphries KH, Cook R, Welsh R, Leipsic J, Genereux P, Moss R, Jue J, Blanke P, Cheung A, Ye J, Dvir D, Umedaly H, Klein R, Rondi K, Poulter R, Stub D, Barbanti M, Fahmy P, Htun N, Murdoch D, Prakash R, Barker M, Nickel K, Thakkar J, Sathananthan J, Tyrell B, Al-Qoofi F, Velianou JL, Natarajan MK, Wijeyesundera HC, Radhakrishnan S, Horlick E, Osten M, Buller C, Peterson M, Asgar A, Palisaitis D, Masson JB, Kodali S, Nazif T, Thourani V, Babaliaros VC, Cohen DJ, Park JE, Leon MB, Webb JG. The Vancouver 3M (Multidisciplinary, Multimodality, But Minimalist) Clinical Pathway Facilitates Safe Next-Day Discharge Home at Low-, Medium-, and High-Volume Transfemoral Transcatheter Aortic Valve Replacement Centers: The 3M TAVR Study. *JACC Cardiovasc Interv.* 2019;12:459-69.
- Beckmann A, Hamm C, Figulla HR, Cremer J, Kuck KH, Lange R, Zahn R, Sack S, Schuler GC, Walther T, Beyersdorf F, Bohm M, Heusch G, Funkat AK, Meinertz T, Neumann T, Papoutsis K, Schneider S, Welz A, Mohr FW; GARY Executive Board. The German Aortic Valve Registry (GARY): a nationwide registry for patients undergoing invasive therapy for severe aortic valve stenosis. *Thorac Cardiovasc Surg.* 2012;60:319-25.
- Leon MB, Smith CR, Mack MJ, Makkar RR, Svensson LG, Kodali SK, Thourani VH, Tuzcu EM, Miller DC, Herrmann HC, Doshi D, Cohen DJ, Pichard AD, Kapadia S, Dewey T, Babaliaros V,

Szeto WY, Williams MR, Kereiakes D, Zajarias A, Greason KL, Whisenant BK, Hodson RW, Moses JW, Trento A, Brown DL, Fearon WF, Pibarot P, Hahn RT, Jaber WA, Anderson WN, Alu MC, Webb JG; PARTNER 2 Investigators. Transcatheter or Surgical Aortic-Valve Replacement in Intermediate-Risk Patients. *N Engl J Med*. 2016;374:1609-20.

13. Noad RL, Johnston N, McKinley A, Dougherty M, Nzewi OC, Jeganathan R, Manoharan G, Spence MS. A pathway to earlier discharge following TAVI: Assessment of safety and resource utilization. *Catheter Cardiovasc Interv*. 2016;87:134-42.

14. Klein H, Boleckova J. Resource utilization and procedure-related costs associated with transfemoral transcatheter aortic valve replacement. *J Med Econ*. 2017;20:640-5.

## Supplementary data

**Supplementary Table 1.** Patient population and procedural characteristics (10 centres; n=499).

**Supplementary Table 2.** Patient population and procedural characteristics of those who underwent TAVI (10 centres; n=499).

**Supplementary Table 3.** 30-day out-of-hospital outcomes based on four different risk and discharge categories.

**Supplementary Table 4.** Between-country differences in those undergoing the procedure.

The supplementary data are published online at:  
[https://eurointervention.pcronline.com/  
doi/10.4244/EIJ-D-18-01197](https://eurointervention.pcronline.com/doi/10.4244/EIJ-D-18-01197)





## Supplementary data

**Supplementary Table 1. Patient population and procedural characteristics (10 centres; n=499).**

	n/N (%) or mean±SD
Patient characteristics	
Age (years)	81.4±6.0
Female gender (%)	242/502 (48.2)
Prior cardiovascular intervention	
Coronary artery bypass grafting	49/494 (9.9)
Percutaneous coronary intervention <6 weeks	43/494 (8.7)
Comorbidities	
Hypertension	384/496 (77.4)
Coronary artery disease	209/495 (42.2)
Diabetes	132/499 (26.5)
Atrial fibrillation	126/486 (25.9)
Chronic obstructive pulmonary disease	88/496 (17.7)
Prior myocardial infarction	64/491 (13.0)
Peripheral vascular disease	37/482 (7.7)
Prior permanent pacemaker	36/482 (7.5)
Renal insufficiency*	21/497 (4.2)
Dialysis	16/499 (3.2)
Porcelain aorta	13/482 (2.7)
Cardiac characteristics	
NYHA Class III/IV (%)	258/484 (53.3)
Angina CCS III/IV (%)	24/484 (5.0)
Ejection fraction (%)	52.8±11.7
AV peak gradient (mmHg)	71.6±23.9
AV mean gradient (mmHg)	44.2±16.0
EuroSCORE II (%)	5.0±6.0
Anaesthesia	
Full anaesthesia	86/499 (17.2)
Conscious sedation / local anaesthesia**	413/499 (82.8)
Balloon dilation prior to TAVI	216/499 (43.3)
Balloon dilation after TAVI	26/499 (5.2)
Conversion to conventional surgery	5/497 (1.0)
Valve size implanted	

20 mm	8/498 (1.6)
23 mm	206/498 (41.4)
26 mm	194/498 (39.0)
29 mm	90/498 (18.1)
Second valve used	3/499 (0.6)
Heart-lung machine used	6/498 (1.2)
Temporary pacemaker	
Removal thereof after the procedure	424/498 (85.1)

---

\* Defined as creatinine >200 µmol/l or dialysis.

\*\* In 5 patients a bail-out full anaesthesia was performed.

AV: atrioventricular; CCS: Canadian Cardiovascular Society; NYHA: New York Heart Association; SD: standard deviation; TIA: transient ischaemic attack

**Supplementary Table 2. Patient population and procedural characteristics of those who underwent TAVI (10 centres; n=499).**

	Cardiac CCU (n=339; 68.6%) n/N (%) or mean±SD	Non-ICU unit (n=155; 31.4%) n/N (%) or mean±SD
Age (years)	81.0±5.9	82.4±5.8
Female gender (%)	181/339 (53.4)	57/155 (36.8)
Prior cardiovascular intervention		
CABG	26/335 (7.8)	23/154 (14.9)
PCI <6 weeks	27/335 (8.1)	16/154 (10.4)
Comorbidities		
CAD	128/335 (38.2)	79/155 (51.0)
Porcelain aorta	9/338 (2.7)	4/141 (2.8)
PVD	26/336 (7.7)	11/143 (7.7)
COPD	59/339 (17.4)	29/152 (19.1)
Atrial fibrillation	96/332 (28.9)	30/150 (20.0)
Renal insufficiency*	13/339 (3.8)	8/154 (5.2)
Dialysis	10/339 (2.9)	6/155 (3.9)
Diabetes	88/339 (26.0)	40/155 (25.8)
Hypertension	279/339 (82.3)	102/152 (67.1)
Prior MI	51/334 (15.3)	12/152 (7.9)
PPI	21/334 (6.3)	14/140 (10.0)
Cardiac characteristics		
NYHA Class III/IV (%)	189/333 (56.8)	63/143 (44.1)
Angina CCS III/IV (%)	19/334 (5.7)	5/143 (3.5)
Ejection fraction (%)	52.4±11.6	53.4±12.0
AV peak gradient (mmHg)	72.6±23.8	69.8±24.1
AV mean gradient (mmHg)	45.9±15.9	40.8±15.7
EuroSCORE II (%)	4.5±5.3	6.5±7.4
Anaesthesia		
Full anaesthesia	75/339 (22.1)	10/155 (6.5)
Conscious sedation / local anaesthesia**	264/339 (77.9)	145/155 (93.5)
Balloon dilation prior to TAVI	173/339 (51.0)	39/155 (25.2)
Balloon dilation after TAVI	17/339 (5.0)	8/155 (5.2)
Conversion to conventional surgery	4/337 (1.2)	0/155 (0)

Valve size implanted		
20 mm	5/339 (1.5)	3/155 (1.9)
23 mm	166/339 (49.0)	39/155 (25.2)
26 mm	121/339 (35.7)	70/155 (45.2)
29 mm	47/339 (13.9)	43/155 (27.7)
Second valve used	3/339 (0.9)	0/155 (0)
Heart-lung machine used	6/338 (1.8)	0/155 (0)

---

\* Defined as creatinine >200 µmol/l or dialysis.

\*\* In 5 patients a bail-out full anaesthesia was performed (ICU 4/339 [1.2] vs. Non-ICU 1/155 [0.6]).

AV: atrioventricular; CABG: coronary artery bypass grafting; CAD: coronary artery disease; CCS: Canadian Cardiovascular Society; COPD: chronic obstructive pulmonary disease; MI: myocardial infarction; NYHA: New York Heart Association; PCI: percutaneous coronary intervention; PPI: permanent pacemaker implantation; PVD: peripheral vascular disease; SD: standard deviation; TIA: transient ischaemic attack

**Supplementary Table 3. 30-day out-of-hospital outcomes based on four different risk and discharge categories.**

30-day outcomes	Concordant discharge		<i>p</i> -value	Discordant discharge	
	Low risk of complications & Discharged ≤3 days	High risk of complications & Discharged >3 days		High risk of complications & Discharged ≤3 days	Low risk of complications & Discharged >3 days
Primary endpoint**	15/327 (4.6)	4/106 (3.8)	1.000	1/6 (16.7)	1/19 (5.3)
Overall mortality	2/326 (0.6)	0/106 (0)	1.000	1/6 (16.7)	0/19 (0.0)
Stroke/TIA	4/326 (1.2)	0/107 (0)	0.576	0/6 (0.0)	0/19 (0.0)
Stroke	0/326 (0.0)	0/107 (0.0)	n.a.	0/6 (0.0)	0/19 (0.0)
TIA	4/326 (1.2)	0/107 (0.0)	0.576	0/6 (0.0)	0/19 (0.0)
PPI	4/325 (1.2)	0/107 (0.0)	0.576	0/6 (0.0)	0/20 (0.0)
Kidney failure	0/325 (0.0)	0/106 (0.0)	n.a.	0/6 (0.0)	0/19 (0.0)
Major vascular complications	0/325 (0.0)	0/107 (0.0)	n.a.	0/6 (0.0)	0/19 (0.0)
Major/life-threatening bleeding	0/325 (0.0)	1/107 (0.9)	0.248	0/6 (0.0)	0/19 (0.0)
Re-hospitalisation (any reason)	29/327 (8.6)	12/107 (11.2)	0.471	1/6 (16.7)	2/19 (10.5)
Re-hospitalisation (cardiac reason)	11/326 (3.4)	3/106 (2.8)	1.000	1/6 (16.7)	1/19 (5.3)

\*\* The primary endpoint and objective of the study was to determine the incidence of a composite of all-cause mortality, vascular access-related complications, permanent pacemaker implantation, stroke, re-hospitalisation due to cardiac reasons, kidney failure and major bleeding, occurring during the first 30 days after hospital discharge.

PPI: permanent pacemaker implantation; TIA: transient ischaemic attack

**Supplementary Table 4. Between-country differences in those undergoing the procedure.**

<b>All patients undergoing TAVI (n=499)</b>	Italy 5 centres n=261*	The Netherlands 2 centres n=127	United Kingdom 3 centres n=111	<i>p</i> -value across countries
<b>Patient characteristics</b>				
Age (years)	81.4±5.9	80.5±6.1	82.6±5.8	0.021
Female gender (%)	133/261 (51.0)	63/127 (49.6)	44/111 (39.6)	0.125
NYHA Class III/IV (%)	159/261 (60.9)	51/121 (42.1)	46/99 (46.5)	0.001
Ejection fraction (%)	54.3±11.3	46.4±11.9	52.3±11.4	<0.001
AV peak gradient (mmHg)	76.7±21.9	60.0±24.5	71.7±23.6	<0.001
AV mean gradient (mmHg)	47.7±14.5	37.2±17.3	41.1±16.0	<0.001
EuroSCORE II (%)	4.7±4.6	4.9±6.6	6.4±8.3	0.067
In-hospital death	1/261 (0.4)	0/127 (0.0)	2/111 (1.8)	0.185
<b>All patients discharged alive (n=496)</b>				
	n=260	n=127	n=109	
Length of hospital stay (days)	3.0 (2.0; 5.0)	1.0 (1.0; 3.0)	2.0 (1.0; 2.0)	<0.001
Length of ICU stay (hours)	24 (2; 48)	4 (4; 4)	0 (0; 0)	<0.001
Length of intermediate care stay (days)	0 (0; 1)	0 (0; 0)	1 (0.5; 2)	<0.001
<b>Discharge (%)</b>				
≤24 hrs**	14/260 (5.4)	65/127 (51.2)	54/109 (49.5)	<0.001
≤48 hrs**	88/260 (33.8)	73/127 (57.5)	92/109 (84.4)	<0.001
≤72 hrs**	161/260 (61.9)	102/127 (80.3)	97/109 (89.0)	<0.001
>72 hrs	99/260 (38.1)	25/127 (19.7)	12/109 (11.0)	<0.001
Discharge ≤3 days & low risk of complications after discharge (%)	161/260 (61.9)	92/120 (76.7)	94/109 (86.2)	<0.001
Discharge >3 days & high risk of complications after discharge (%)	81/260 (31.2)	24/120 (20.0)	11/109 (10.1)	<0.001
Discordant discharge	18/260 (6.9)	4/120 (0.3)	4/109 (3.7)	0.240
<b>Destination on discharge</b>				
Home	240/260 (92.3)	49/127 (38.6)	102/108 (93.6)	<0.001
Another (referring) hospital	2/260 (0.8)	74/127 (58.3)	4/108 (3.7)	<0.001

Extended care	1/260 (0.4)	0/127 (0.0)	0/108 (0.0)	1.000
Rehabilitation	16/260 (6.2)	3/127 (2.4)	1/108 (0.9)	0.040
Nursing home	1/260 (0.4)	1/127 (0.8)	1/108 (0.9)	0.606
<b>30-day outcomes of those discharged alive (n=468)</b>				
Primary endpoint ***	30/253 (11.9)	19/113 (16.8)	9/105 (8.6)	0.171
Overall mortality	1/247 (0.4)	2/113 (1.8)	0/104 (0)	0.276
Stroke/TIA	4/248 (1.6)	0/113 (0)	4/104 (3.8)	0.071
Stroke	3/248 (1.2)	0/113 (0)	1/104 (1.0)	0.665
TIA	1/248 (0.4)	0/113 (0)	3/104 (2.9)	0.070
PPI	23/250 (9.2)	8/111 (7.2)	2/104 (1.9)	0.052
Kidney failure	0/246 (0.8)	0/113 (0)	1/104 (1.0)	0.225
Major vascular complications	4/247 (1.6)	1/113 (0.9)	1/104 (1.0)	1.000
Major/life-threatening bleeding	4/247 (1.6)	1/113 (0.9)	3/104 (2.9)	0.569
Re-hospitalisation (any reason)	14/247 (5.7)	17/114 (14.9)	14/105 (13.3)	0.006
Re-hospitalisation (cardiac reason)	0/245 (0)	14/114 (12.3)	3/105 (2.9)	<0.001

\* three patients died prior to TAVI; \*\* cumulative percentage; \*\*\* the primary endpoint and objective of the study was to determine the incidence of a composite of all-cause mortality, vascular access-related complications, permanent pacemaker implantation, stroke, re-hospitalisation due to cardiac reasons, kidney failure and major bleeding, occurring during the first 30 days after hospital discharge.

PPI: permanent pacemaker implantation; TIA: transient ischaemic attack