

No-reflow after primary percutaneous coronary intervention in patients with ST-elevation myocardial infarction: an angiographic core laboratory analysis of the TOTAL Trial

Marc-André d'Entremont^{1,2}, MD, MPH; Ashraf Alazzoni³, MD; Vladimír Džavík⁴, MD; Vinoda Sharma⁵, MBBS; Christopher B. Overgaard⁶, MD; Samuel Lemaire-Paquette¹, MSc; Pablo Lamelas⁷, MD; John A. Cairns⁸, MD; Shamir R. Mehta^{2,9}, MD, MSc; Madhu K. Natarajan^{2,9}, MD, MSc; Tej Sheth^{2,9}, MD; John-David Schwalm^{2,9}, MD, MSc; Sunil V. Rao¹⁰, MD; Goran Stankovic¹¹, MD; Sasko Kedev¹², MD; Raul Moreno¹³, MD; Warren J. Cantor⁶, MD; Shahar Lavi¹⁴, MD; Olivier F. Bertrand¹⁵, MD, PhD; Michel Nguyen¹, MD; Étienne L. Couture¹, MD, MPH; Sanjit Jolly^{2,9*}, MD, MSc

1. Sherbrooke University Hospital Center (CHUS), Sherbrooke, QC, Canada; 2. Population Health Research Institute, McMaster University, Hamilton Health Sciences, Hamilton, ON, Canada; 3. Cleveland Clinic Abu Dhabi, Abu Dhabi, UAE; 4. Peter Munk Cardiac Centre, University Health Network, Toronto, ON, Canada; 5. Birmingham City Hospital, University of Birmingham, Birmingham, UK; 6. Southlake Regional Health Centre, University of Toronto, Toronto, ON, Canada; 7. Instituto Cardiovascular de Buenos Aires, Buenos Aires, Argentina; 8. Vancouver Coastal Health Research Institute, Vancouver, BC, Canada; 9. Hamilton Health Sciences, Hamilton, ON, Canada; 10. New York University Langone Health, New York, NY, USA; 11. Department of Cardiology, University Clinical Center of Serbia, University of Belgrade, Belgrade, Serbia; 12. University Clinic of Cardiology, Ss. Cyril and Methodius University, Skopje, Republic of North Macedonia; 13. University Hospital La Paz, Madrid, Spain; 14. London Health Sciences Centre, London, ON, Canada; 15. Quebec Heart and Lung Institute, Quebec City, QC, Canada

This paper also includes supplementary data published online at: <https://eurointervention.pcronline.com/doi/10.4244/EIJ-D-23-00112>

KEYWORDS

- drug-eluting stent
- STEMI
- thrombus-containing lesion

Abstract

Background: The optimal strategy to prevent no-reflow in ST-elevation myocardial infarction (STEMI) patients undergoing percutaneous coronary intervention (PCI) is unknown.

Aims: We aimed to examine the effect of thrombectomy on the outcome of no-reflow in key subgroups and the adverse clinical outcomes associated with no-reflow.

Methods: We performed a *post hoc* analysis of the TOTAL Trial, a randomised trial of 10,732 patients comparing thrombectomy versus PCI alone. This analysis utilised the angiographic data of 1,800 randomly selected patients.

Results: No-reflow was diagnosed in 196 of 1,800 eligible patients (10.9%). No-reflow occurred in 95/891 (10.7%) patients randomised to thrombectomy compared with 101/909 (11.1%) in the PCI-alone arm (odds ratio [OR] 0.95, 95% confidence interval [CI]: 0.71-1.28; p-value=0.76). In the subgroup of patients who underwent direct stenting, those randomised to thrombectomy compared with PCI alone experienced less no-reflow (19/371 [5.1%] vs 21/216 [9.7%], OR 0.50, 95% CI: 0.26-0.96). In patients who did not undergo direct stenting, there was no difference between the groups (64/504 [12.7%] vs 75/686 [10.9%]), OR 1.18, 95% CI: 0.82-1.69; interaction p-value=0.02). No-reflow patients had a significantly increased risk of experiencing the primary composite outcome (cardiovascular death, recurrent myocardial infarction, cardiogenic shock, or NYHA Class IV heart failure) at 1 year (adjusted hazard ratio 1.70, 95% CI: 1.13-2.56; p-value=0.01).

Conclusions: In patients with STEMI treated by PCI, thrombectomy did not reduce no-reflow in all patients but may be synergistic with direct stenting. No-reflow is associated with increased adverse clinical outcomes.

*Corresponding author: Population Health Research Institute, Hamilton General Hospital, 237 Barton Street East, Hamilton, ON L8L 2X2, Canada. E-mail: sanjit.jolly@phri.ca

Abbreviations

CI	confidence interval
MI	myocardial infarction
OR	odds ratio
PCI	percutaneous coronary intervention
STEMI	ST-segment elevation myocardial infarction
TIMI	Thrombolysis in Myocardial Infarction
TOTAL	Trial of Routine Aspiration Thrombectomy with PCI Versus PCI Alone in Patients With STEMI Undergoing Primary PCI

Introduction

Coronary no-reflow is defined as myocardial hypoperfusion resulting from microvascular obstruction in the presence of a patent epicardial circulation¹. In the primary percutaneous coronary intervention (PCI) era for ST-elevation myocardial infarction (STEMI), the no-reflow phenomenon is increasingly recognised as a poor prognostic marker for left ventricular remodelling, infarct size, left ventricular ejection fraction, and long-term mortality². Despite its clinical importance, no preventive or treatment strategies for no-reflow have demonstrated significant benefits on hard clinical outcomes²⁻⁴.

The Trial of Routine Aspiration Thrombectomy with PCI Versus PCI Alone in Patients With STEMI Undergoing Primary PCI (TOTAL) was a randomised controlled trial comparing routine upfront manual aspiration thrombectomy versus primary PCI alone⁵. The trial showed no difference for the primary composite outcome of cardiovascular death, myocardial infarction (MI), cardiogenic shock, or New York Heart Association (NYHA) Class IV heart failure between the groups; although, there was an increased risk of stroke in the thrombectomy group^{6,7}.

We investigated whether being randomised to thrombectomy versus PCI alone affected the angiographic core laboratory-adjudicated outcome of no-reflow in key subgroups. Furthermore, we explored the association between no-reflow and major cardiovascular outcomes at 1 year and determined significant clinical predictors of no-reflow.

Methods

POPULATION AND STUDY DESIGN

The TOTAL Trial was an international, multicentre randomised trial in which 10,732 patients (87 centres, 20 countries) with STEMI were randomly (1:1) assigned to undergo routine upfront manual aspiration thrombectomy (using the Export catheter; Medtronic) versus PCI alone. The trial protocol and results have been previously published^{5,8}. The angiographic parameters of a randomly selected subset of patients were assessed at the angiographic core laboratory at the Peter Munk Cardiac Care Centre, Toronto, Canada, where the investigators were blinded to all non-angiographic patient characteristics⁸. The study complies with the Declaration of Helsinki and was approved by the ethics committee at each participating centre. All patients provided written informed consent before enrolment.

DEFINITIONS AND ENDPOINTS

No-reflow was defined as a post-PCI (measured at the end of the procedure) reduction in coronary flow, characterised by a Thrombolysis in Myocardial Infarction (TIMI) flow <3 in the absence of dissection, thrombus, spasm, or high-grade residual stenosis at the original target lesion^{3,9}. No-reflow was determined by the operators during the initial procedure and subsequently by the blinded core laboratory personnel for the angiographic core laboratory subset.

The primary composite outcome for the present analysis included cardiovascular mortality, recurrent myocardial infarction, cardiogenic shock, or NYHA Class IV heart failure, as per the TOTAL Trial⁵. Other outcomes included the individual components of the composite endpoint: all-cause mortality, all-cause rehospitalisation, and stent thrombosis. The definitions of these endpoints have been previously described in detail^{5,8}. A central committee blinded to study group allocation adjudicated all outcome events.

ANGIOGRAPHIC CORE LABORATORY ANALYSIS

Quantitative coronary angiographic analysis was performed using QAngio XA version 7.3 (Medis Medical Imaging). As previously described, the epicardial coronary flow was reported using the qualitative TIMI classification, while thrombus grades were defined according to Gibson^{10,11}.

STATISTICAL ANALYSIS

We used the modified intention-to-treat data from the TOTAL Trial to include only patients who had undergone randomisation and primary PCI. The primary study population was the angiographic core laboratory subset. For comparison, analyses were also performed for the entire TOTAL population, in which the operator assessed no-reflow.

We presented continuous data with normal distribution as means with standard deviations and used the Student's t-test for statistical testing. Non-normal data were presented as medians with interquartile ranges and compared using the Wilcoxon rank-sum test. We assessed dichotomous variables using chi-square analysis and Fisher's exact test.

Logistic regression with randomisation to thrombectomy as the exposure and no-reflow status as the outcome across multiple subgroups with interaction terms was used to calculate odds ratios (OR) and 95% confidence intervals (CI). The key subgroups were chosen from the initial TOTAL Trial and subject matter knowledge. The key subgroups included TIMI thrombus grade (<4 vs ≥4), symptom onset (<6 hours vs 6-12 hours), initial TIMI flow (0-1 vs 2-3), primary PCI operator volume (mean and below vs above mean), MI type (anterior vs non-anterior), age (≤65 years vs >65 years), and direct stenting (yes vs no)⁷.

We calculated unadjusted and adjusted hazard ratios (HR) and 95% CI using an inverse probability of treatment-weighted (IPTW) Cox proportional hazards model for the clinical outcomes defined above. The adjusted model included age, sex, previous MI,

Killip class ≥ 2 , anterior MI, presenting systolic blood pressure, initial TIMI thrombus grade, and initial TIMI flow. No violation of the proportional hazard modelling choice was detected using Schoenfeld residuals. We plotted the standardised differences before and after IPTW modelling. We also plotted the unadjusted and adjusted marginal survival functions according to no-reflow status for the primary composite outcome. We used multiple imputations (5 datasets) using fully conditional specification methods for missing data¹². In the case of missing data, missing values for each covariate were $<1\%$.

Multivariable predictors of no-reflow were identified using a stepwise selection algorithm with a significance level of <0.10 for entry and exit in a logistic regression model. We included age, sex, hypertension, diabetes mellitus, smoking status, previous MI, Killip class, anterior MI, presenting heart rate, presenting systolic and diastolic blood pressure, initial TIMI thrombus grade (<4 vs ≥ 4), initial TIMI flow (0-1 vs 2-3), prophylactic use of GPIIb/IIIa inhibitors and vasodilators, operator experience by primary PCI volume, actual thrombectomy use, and direct stenting.

To investigate the interrater reliability between angiographic core laboratory analysis and operator assessment, we constructed a 2x2 table and calculated Cohen's κ coefficient. A 2-sided p-value of <0.05 was considered significant for all analyses. We did not adjust for multiple comparisons. Results were obtained using R software, version 4.1.3 (R Foundation for Statistical Computing).

Results

ANGIOGRAPHIC CORE LABORATORY ANALYSIS

A total of 1,800 patients from the angiographic core laboratory analysis were included, with 196 (10.9%) patients experiencing the no-reflow phenomenon (Figure 1). The patients in the no-reflow group were older (64.4 years vs 60.8 years); however, both groups had a similar proportion of female patients (25.0% [no-reflow] vs 22.1% [without no-reflow]) (Table 1). Patients with no-reflow had a higher Killip class, lower pre-PCI TIMI flow, and less direct stenting.

No-reflow occurred in 95/891 (10.7%) patients randomised to thrombectomy compared with 101/909 (11.1%) in the PCI-alone

arm (OR 0.95, 95% CI: 0.71-1.28; $p=0.76$) (Figure 2). In the subgroup of patients who underwent direct stenting, those randomised to thrombectomy compared with PCI alone experienced less no-reflow (19/371 [5.1%] vs 21/216 [9.7%], OR 0.50, 95% CI: 0.26-0.96). In patients who did not undergo direct stenting, there was no difference between groups (64/504 [12.7%] vs 75/686 [10.9%], OR 1.18, 95% CI: 0.82-1.69; interaction p -value=0.02). The effect of thrombectomy on no-reflow remained consistent across all other subgroups. Of note, the effect of thrombectomy on no-reflow did not change according to the infarct-related artery (Supplementary Figure 1).

At 1 year, STEMI patients with no-reflow had a 70% increased relative risk of experiencing the primary composite outcome of cardiovascular death, recurrent myocardial infarction, cardiogenic shock, or NYHA Class IV heart failure (31/196 [15.8%] vs 101/1,604 [6.3%], adjusted HR 1.70, 95% CI: 1.13-2.56; p -value=0.01) compared with patients without no-reflow (Table 2, Figure 3). Furthermore, no-reflow was also associated with an adjusted increased risk of cardiogenic shock (16/196 [8.2%] vs 28/1,604 [1.7%], HR 2.20, 95% CI: 1.14-4.24; p -value=0.02). The IPTW modelling provided adequate covariate balance with all absolute standardised mean differences reduced to less than 0.1 (Supplementary Figure 2).

As demonstrated in Figure 4, the 3 significant predictors of no-reflow were age (per 10-year increment) (OR 1.25, 95% CI: 1.09-1.42; p -value=0.001), pre-PCI TIMI flow 3 (OR 0.33, 95% CI: 0.19-0.56; p -value <0.0001), and direct stenting (OR 0.66, 95% CI: 0.45-0.95; p -value=0.03).

INVESTIGATOR-REPORTED NO-REFLOW

The baseline characteristics of the operator-assessed patients were similar to those of the angiographic core laboratory patients, as demonstrated in Supplementary Table 1. According to operator assessment, 644 of the 9,755 (6.6%) eligible patients were deemed to have no-reflow compared with 10.9% in the angiographic core laboratory review (Supplementary Table 2, Supplementary Figure 3). Cohen's κ value of 0.29 demonstrates only fair inter-rater agreement (Table 3).

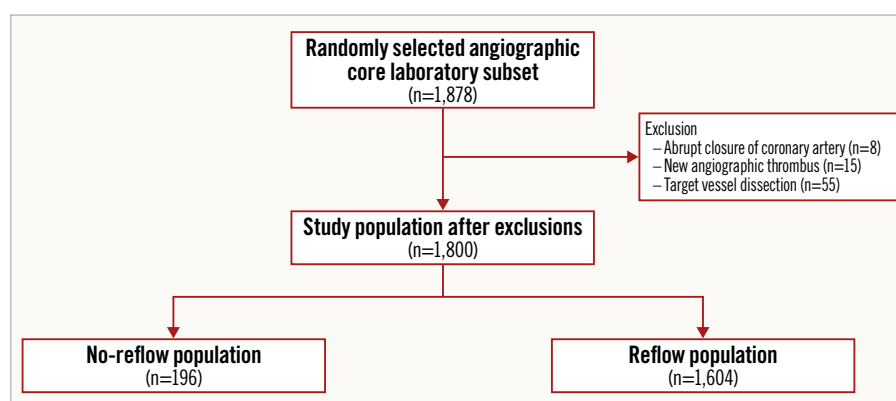


Figure 1. CONSORT diagram for the angiographic core laboratory population according to no-reflow statistics.

Table 1. Baseline and procedural characteristics for the angiographic core laboratory patients.

Variable		No-reflow (n=196)	Reflow (n=1,604)	p-value
Demographic and comorbidities				
Age, years		64.4±12.9	60.8±11.8	<0.01
Female sex		49 (25.0)	354 (22.1)	0.40
Hypertension		104 (53.1)	823 (51.3)	0.69
Diabetes mellitus		40 (20.4)	287 (17.9)	0.44
Current smoker		63 (32.1)	752 (46.9)	<0.01
Previous MI		20 (10.2)	172 (10.7)	0.92
Previous PCI		14 (7.1)	148 (9.2)	0.41
Clinical presentation				
Killip class ≥2		16 (8.1)	68 (4.2)	0.02
Location of myocardial infarction	Anterior	93 (47.4)	626 (39.0)	0.05
	Inferior	98 (50.0)	908 (56.6)	
	Lateral or other	5 (2.6)	70 (4.4)	
Presenting heart rate, beats per minute*		79.2±19.4	76.8±17.7	0.10
Presenting systolic blood pressure, mmHg*		135.0±25.1	134.1±24.3	0.63
Presenting diastolic blood pressure, mmHg*		81.7±16.1	82.5±16.1	0.86
Periprocedural medication use				
Unfractionated heparin		160 (81.6)	1,196 (74.6)	0.04
Bivalirudin		32 (16.3)	260 (16.2)	1.0
Low molecular weight heparin		55 (28.1)	406 (25.3)	0.46
Intracoronary vasodilator	Upfront	19 (9.7)	131 (8.2)	0.33
	Bailout	22 (11.2)	53 (3.3)	<0.01
Glycoprotein IIb/IIIa inhibitor	Upfront	48 (24.5)	474 (29.6)	0.14
	Bailout	46 (23.5)	247 (15.4)	<0.01
	Intracoronary bolus	34 (36.2) ¹	280 (38.8) ¹	0.97
Initial thrombus grade				
0: no thrombus present		8 (4.1)	73 (4.6)	<0.01
1: possible thrombus present		4 (2.0)	135 (8.4)	
2: definite thrombus present, <0.5x vessel diameter		9 (4.6)	77 (4.8)	
3: definite thrombus present, 0.5-2.0x vessel diameter		5 (2.6)	120 (7.5)	
4: definite thrombus present, >2.0x vessel diameter		28 (14.3)	248 (15.5)	
5: total occlusion		138 (70.4)	946 (59.0)	
Missing data		4 (2.0)	5 (0.03)	
TIMI flow before PCI				
TIMI flow 0		142 (72.4)	960 (59.9)	<0.01
TIMI flow 1		24 (12.2)	119 (7.4)	
TIMI flow 2		18 (9.2)	191 (11.9)	
TIMI flow 3		10 (5.1)	330 (20.6)	
Missing data		2 (1.0)	4 (0.2)	
Thrombectomy		91 (46.4)	820 (51.1)	0.98
Presence of macroscopic aspirate material retrieved with thrombectomy catheter		60 (65.9)	539 (65.7)	0.91
Use of stenting				
Stenting		169 (86.2)	1,552 (96.8)	<0.01
Direct stenting ²		40 (23.7)	547 (35.2)	<0.01
Stenting with DES ²		91 (53.8)	822 (53.0)	0.95
PCI procedure time, mins		43 [30.0-60.5]	37 [27.0-50.0]	<0.01
Data are mean±SD, n (%) or median [IQR]. ¹ The denominator is based on the number of patients who received a glycoprotein IIb/IIIa inhibitor. ² The denominator is based on the number of patients who received a stent. *Less than 1% missing data. DES: drug-eluting stent; IQR: interquartile range; MI: myocardial infarction; PCI: percutaneous coronary intervention; SD: standard deviation; TIMI: Thrombolysis in Myocardial Infarction				

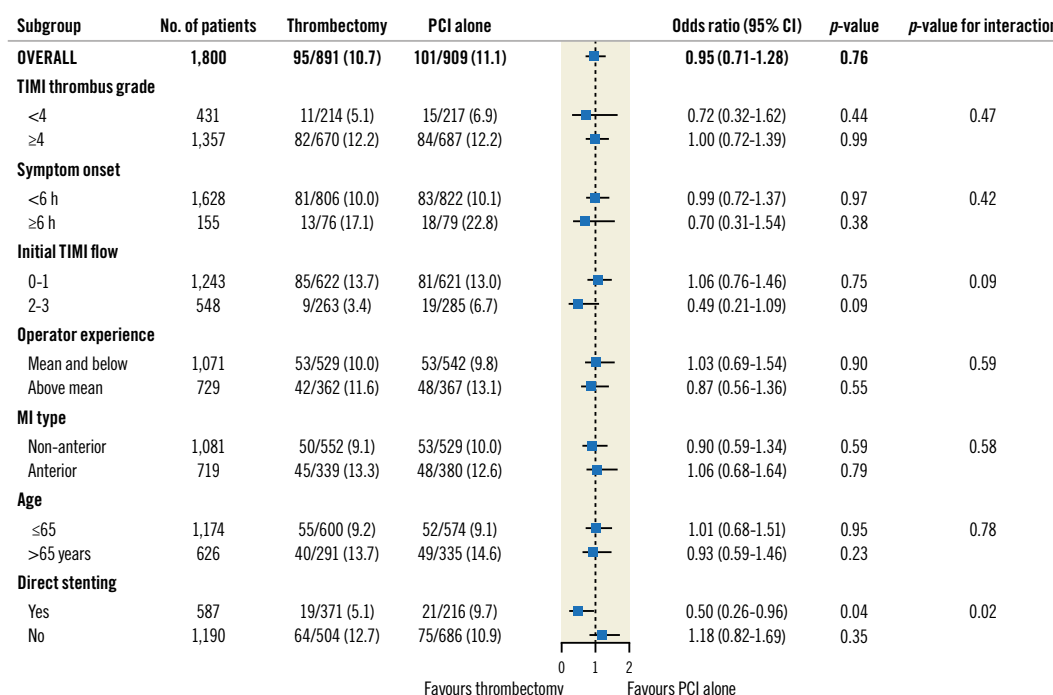


Figure 2. Randomised subgroup analysis for no-reflow in the angiographic core laboratory population. CI: confidence intervals; MI: myocardial infarction; PCI: percutaneous coronary intervention; TIMI: Thrombolysis in Myocardial Infarction

Table 2. Major adverse outcomes according to no-reflow status at 1 year for the angiographic core laboratory patients.

Variables	No-reflow (n=196)	Reflow (n=1,604)	Unadjusted HR (95% CI)	Adjusted HR ¹ (95% CI)	p-value
Primary composite outcome					
Cardiovascular death, recurrent myocardial infarction, cardiogenic shock, or NYHA Class IV heart failure	31 (15.8)	101 (6.3)	2.69 (1.80-4.02)	1.70 (1.13-2.56)	0.01
Other outcomes					
All-cause mortality	17 (8.7)	44 (2.7)	3.31 (1.89-5.79)	1.54 (0.90-2.66)	0.12
Cardiovascular mortality	14 (7.1)	34 (2.1)	3.51 (1.88-6.55)	1.67 (0.88-3.19)	0.12
Recurrent myocardial infarction	7 (3.6)	43 (2.7)	1.34 (0.60-2.98)	1.16 (0.28-4.74)	0.81
NYHA Class IV heart failure	8 (4.1)	27 (1.7)	2.52 (1.14-5.56)	1.63 (0.69-3.86)	0.25
Cardiogenic shock	16 (8.2)	28 (1.7)	4.89 (2.65-9.04)	2.20 (1.14-4.24)	0.02
All-cause rehospitalisation	8 (4.1)	40 (2.3)	1.71 (0.80-3.64)	1.25 (0.63-2.51)	0.52
Stent thrombosis	6 (3.1)	27 (1.7)	1.93 (0.80-4.67)	1.36 (0.35-5.23)	0.62

Data are n (%). ¹C-statistic=0.57 (95% CI: 0.53-0.61). CI: confidence interval; HR: hazard ratio; NYHA: New York Heart Association

In the operator-assessed no-reflow population, the randomised subgroup analysis demonstrated that the effect of thrombectomy remained consistent across all subgroups with no significant interaction with direct stenting (**Supplementary Figure 4**). However, direct stenting remained a strong predictor of no-reflow (OR 0.66, 95% CI: 0.53-0.69; p-value<0.0001) (**Supplementary Figure 5**).

After IPTW adjustment (**Supplementary Figure 6**), the operator-assessed no-reflow patients had a significantly increased risk of experiencing the primary composite outcome (104/644 [16.1%] vs 679/9,111 [7.5%], HR 1.73, 95% CI: 1.33-2.25; p-value≤0.01), all-cause mortality (79/644 [12.3%] vs 335/9,111 [3.7%], HR 2.39, 95% CI: 1.73-3.30; p-value≤0.01), cardiovascular mortality

(72/644 [11.2%] vs 274/9,111 [3.0%], HR 2.60, 95% CI: 1.85-3.66, p-value≤0.01) and cardiogenic shock (44/644 [6.8%] vs 174/9,111 [1.9%], HR 2.41, 95% CI: 1.68-3.46; p-value≤0.0001) at 1 year compared to patients without no-reflow (**Supplementary Table 2**).

Discussion

Data from the angiographic core laboratory of the largest randomised trial of manual thrombus aspiration during primary PCI in STEMI demonstrated that routine use of manual thrombus aspiration did not reduce the incidence of no-reflow. However, no-reflow was reduced in the subgroup of patients who received direct stenting following thrombus aspiration. Finally, these

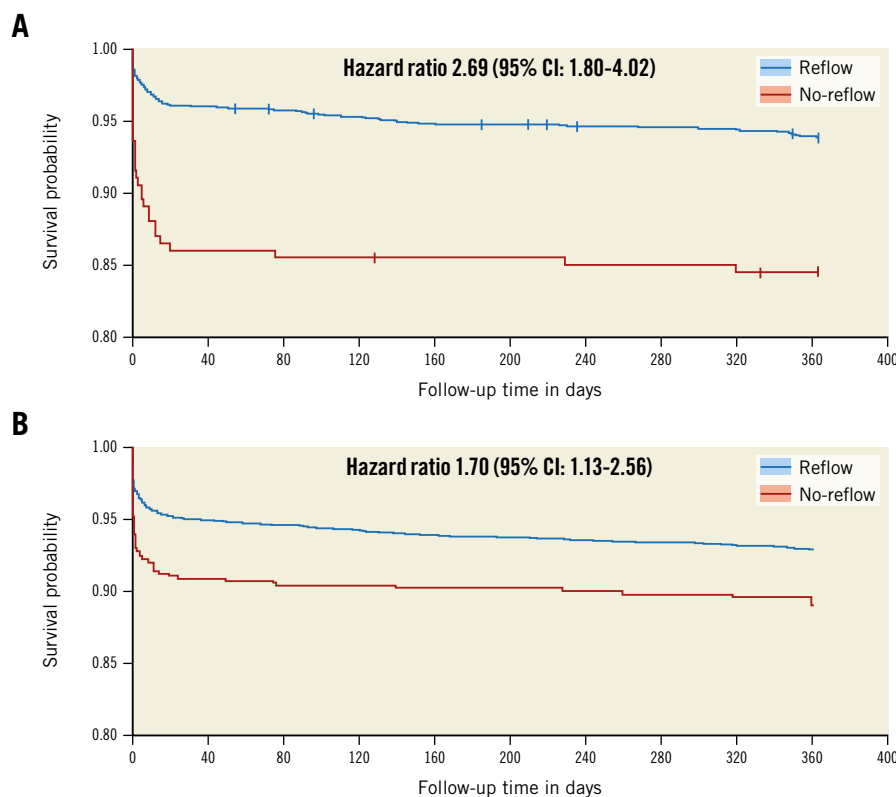


Figure 3. Survivor probability for the composite primary outcome according to reflow status in the angiographic core laboratory population. A) Unadjusted survivor function and B) adjusted marginal survivor function. CI: confidence interval

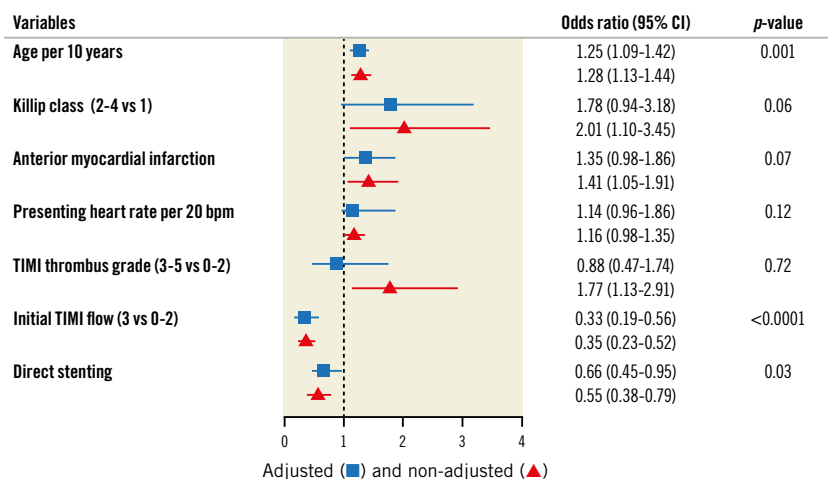


Figure 4. Independent predictors of no-reflow in the angiographic core laboratory population. C-statistic=0.67 (95% CI: 0.63-0.71) for the multivariable logistic regression model. CI: confidence interval; TIMI: Thrombolysis in Myocardial Infarction

analyses confirm that no-reflow is common, prognostically important, and associated with adverse events in the current era of primary PCI. We demonstrated that no-reflow is associated with adverse outcomes, which is confirmatory; our randomised analysis showed that thrombectomy is not associated with a reduction in no-reflow and that direct stenting may have a synergistic effect with thrombectomy in an angiographic core laboratory-adjudicated population, which is novel.

There have been mixed results regarding the use of direct stenting to prevent no-reflow in STEMI. A meta-analysis of randomised trials of direct stenting in myocardial infarction (n=754) demonstrated that direct stenting did not significantly improve no-reflow (6.6% in the direct-stenting group compared to 6.9% in the conventional-stenting group, OR 0.78, 95% CI: 0.39-1.55; p=0.48)¹³. However, trials that combined thrombectomy with direct stenting versus standard PCI alone were excluded. The Polish-Italian-Hungarian RAndomized

Table 3. Agreement between operator assessment and angiographic core laboratory assessment for post-PCI no-reflow.

Operator assessment				
Angiographic core lab assessment		Reflow	No-reflow	Total
	Reflow	1,486 (85.7)	74 (4.3)	1,560 (89.9)
	No-reflow	122 (7.0)	53 (3.0)	175 (10.1)
Total		1,608 (92.7)	127 (7.3)	1,735

Data are n (%). McNemar's chi-squared test $p < 0.01$; Cohen's $\kappa = 0.29$. PCI: percutaneous coronary intervention

Thrombectomy Trial (PIHRATE) demonstrated that a thrombectomy and direct-stenting strategy decreased no-reflow after primary PCI compared to a predilatation strategy without thrombectomy in a STEMI population¹⁴. While similar, our comparison is slightly different; our randomised data suggest that thrombectomy may be associated with a decreased risk of no-reflow in patients undergoing direct stenting, compared to direct stenting alone. Thrombus aspiration likely facilitates direct stenting. Although prior studies did not find an interaction between thrombus aspiration and direct stenting, they used investigator-reported no-reflow rather than reports from angiographic core laboratories¹⁵. Similarly, we caution against over-interpreting the absence of significant interaction between direct stenting and thrombectomy in the operator-assessed population, as we have demonstrated that operator-assessed no-reflow may be unreliable and may lead to patient misclassification ($\kappa = 0.29$). A similar interrater agreement for no-reflow has been previously reported¹⁶. Our study may be used as a cautionary tale, underlining the importance for studies analysing angiographic markers of no-reflow to use blinded core angiographic laboratory-adjudicated data as much as possible to avoid biased findings.

Our finding that no-reflow is associated with a markedly increased relative risk for adverse clinical outcomes at 1 year is comparable to previous studies^{17,18}. In an observational study by Ndrepepa et al, STEMI patients who experienced no-reflow had a larger infarct size (15% vs 8.0% of the left ventricle; $p < 0.001$) and had an increased risk of 5-year mortality (adjusted HR 1.66, 95% CI: 1.17-2.36; $p = 0.004$)¹⁸. When blood cannot circulate through the necrotic myocardium, macrophages cannot clear cellular debris, and humoral factors cannot access the tissue, thus, disrupting the optimal myocardial healing processes¹⁹. Consequently, no-reflow leads to maladaptive remodelling, left ventricular dysfunction, and a higher incidence of adverse events.

More than 10% of our study population developed no-reflow. Given the poor prognosis associated with no-reflow, clinicians may benefit from early recognition of the risk factors for no-reflow. Age and initial TIMI flow are well-known predictors of no-reflow post-PCI in STEMI patients^{17,20}. Direct stenting is a modifiable risk factor that should be tested in prospective randomised trials. However, there is a theoretical risk of stent undersizing, as reduced flow may lead to vessel size underestimation²¹. Intracoronary imaging may be helpful to identify coronary anatomy at high risk of no-reflow and to mitigate the risk of undersizing by allowing optimal size expansion and apposition^{22,23}.

Limitations

The present study has several limitations. First, the *post hoc* subgroup analyses should be considered hypothesis-generating. Second, as direct stenting was a post-randomisation variable, thrombectomy may have influenced the decision or the ability to use a direct-stenting strategy. It is possible that lower-risk patients with lower thrombus burdens may explain some of the association between direct stenting and no-reflow. Third, while our study sample is relatively large for a core laboratory- and physician-adjudicated clinical endpoint study, we had low power to detect differences for the secondary endpoints. However, the low interrater agreement suggests that blinded angiographic core laboratory analyses are essential, as operators may misclassify no-reflow. Finally, we did not have imaging studies correlating no-reflow status to infarct size or left ventricular dysfunction.

Conclusions

The present TOTAL angiographic core laboratory analysis demonstrates that thrombectomy did not reduce no-reflow in all patients but may be synergistic with direct stenting. No-reflow is associated with an increased risk of cardiovascular mortality, recurrent MI, cardiogenic shock, or NYHA Class IV heart failure. Contemporary randomised controlled trials are warranted to better assess the association between direct stenting and no-reflow.

Impact on daily practice

No-reflow management in ST-segment elevation myocardial infarction patients undergoing primary percutaneous coronary intervention is poorly defined. We performed a *post hoc* analysis of the TOTAL Trial angiographic core laboratory data ($n = 1,800$), demonstrating that while thrombectomy did not reduce no-reflow in all patients, it may have a synergistic effect with direct stenting to decrease no-reflow. No-reflow is associated with an increased risk of cardiovascular mortality, recurrent myocardial infarction, cardiogenic shock, or NYHA Class IV heart failure.

Acknowledgments

The authors would like to acknowledge the diligent work of Mrs Fei Yuan and Peggy Gao for assisting with the statistical analyses.

Funding

Medtronic and the Canadian Institutes of Health Research supported the original TOTAL Trial.

Conflict of interest statement

C.B. Overgaard reports receiving consulting fees from Boston Scientific. J.A. Cairns reports receiving research grants from Medtronic, AstraZeneca, Boston Scientific, and Edwards Lifesciences; consulting fees from Abbott Vascular; and receipt of equipment and materials from AstraZeneca. S. Jolly reports

receiving grants from Boston Scientific and honoraria from Penumbra. The other authors have no conflicts of interest to declare.

References

- Kloner RA, Ganote CE, Jennings RB. The "no-reflow" phenomenon after temporary coronary occlusion in the dog. *J Clin Invest.* 1974;54:1496-508.
- Rezkalla SH, Stankowski RV, Hanna J, Kloner RA. Management of No-Reflow Phenomenon in the Catheterization Laboratory. *JACC Cardiovasc Interv.* 2017;10:215-23.
- Wong DT, Puri R, Richardson JD, Worthley MI, Worthley SG. Myocardial 'no-reflow'--diagnosis, pathophysiology and treatment. *Int J Cardiol.* 2013;167:1798-806.
- Niccoli G, Kharbanda RK, Crea F, Banning AP. No-reflow: again prevention is better than treatment. *Eur Heart J.* 2010;31:2449-55.
- Jolly SS, Cairns JA, Yusuf S, Meeks B, Pogue J, Rokoss MJ, Kedev S, Thabane L, Stankovic G, Moreno R, Gershlick A, Chowdhary S, Lavi S, Niemelä K, Steg PG, Bernat I, Xu Y, Cantor WJ, Overgaard CB, Naber CK, Cheema AN, Welsh RC, Bertrand OF, Avezum A, Bhindi R, Pancholy S, Rao SV, Natarajan MK, ten Berg JM, Shestakovska O, Gao P, Widimsky P, Džavik V; TOTAL Investigators. Randomized trial of primary PCI with or without routine manual thrombectomy. *N Engl J Med.* 2015;372:1389-98.
- Jolly SS, Cairns JA, Yusuf S, Rokoss MJ, Gao P, Meeks B, Kedev S, Stankovic G, Moreno R, Gershlick A, Chowdhary S, Lavi S, Niemela K, Bernat I, Cantor WJ, Cheema AN, Steg PG, Welsh RC, Sheth T, Bertrand OF, Avezum A, Bhindi R, Natarajan MK, Horak D, Leung RC, Kassam S, Rao SV, El-Omar M, Mehta SR, Velianou JL, Pancholy S, Džavik V; TOTAL Investigators. Outcomes after thrombus aspiration for ST elevation myocardial infarction: 1-year follow-up of the prospective randomised TOTAL trial. *Lancet.* 2016;387:127-35.
- Jolly SS, Cairns JA, Yusuf S, Meeks B, Gao P, Hart RG, Kedev S, Stankovic G, Moreno R, Horak D, Kassam S, Rokoss MJ, Leung RC, El-Omar M, Romppanen HO, Alazzoni A, Alak A, Fung A, Alexopoulos D, Schwalm JD, Valettas N, Džavik V; TOTAL Investigators. Stroke in the TOTAL trial: a randomized trial of routine thrombectomy vs. percutaneous coronary intervention alone in ST elevation myocardial infarction. *Eur Heart J.* 2015;36:2364-72.
- Jolly SS, Cairns J, Yusuf S, Meeks B, Shestakovska O, Thabane L, Niemelä K, Steg PG, Bertrand OF, Rao SV, Avezum A, Cantor WJ, Pancholy SB, Moreno R, Gershlick A, Bhindi R, Welsh RC, Cheema AN, Lavi S, Rokoss M, Džavik V. Design and rationale of the TOTAL trial: a randomized trial of routine aspiration Thrombectomy with percutaneous coronary intervention (PCI) versus PCI Alone in patients with ST-elevation myocardial infarction undergoing primary PCI. *Am Heart J.* 2014;167:315-21.e1.
- Eeckhout E, Kern MJ. The coronary no-reflow phenomenon: a review of mechanisms and therapies. *Eur Heart J.* 2001;22:729-39.
- Sharma V, Jolly SS, Hamid T, Sharma D, Chiha J, Chan W, Fuchs F, Bui S, Gao P, Kassam S, Leung RC, Horak D, Romppanen HO, El-Omar M, Chowdhary S, Stankovic G, Kedev S, Rokoss MJ, Sheth T, Džavik V, Overgaard CB. Myocardial blush and microvascular reperfusion following manual thrombectomy during percutaneous coronary intervention for ST elevation myocardial infarction: insights from the TOTAL trial. *Eur Heart J.* 2016;37:1891-8.
- Garcia-Garcia HM, McFadden EP, Farb A, Mehran R, Stone GW, Spertus J, Onuma Y, Morel MA, van Es GA, Zuckerman B, Fearon WF, Taggart D, Kappetein AP, Krucoff MW, Vranckx P, Windecker S, Cutlip D, Serruys PW; Academic Research Consortium. Standardized End Point Definitions for Coronary Intervention Trials: The Academic Research Consortium-2 Consensus Document. *Eur Heart J.* 2018;39:2192-207.
- Rubin D. Multiple Imputations for Nonresponse in Surveys. New York: John Wiley & Sons; 2008.
- Alak A, Lugomirski P, Aleksova N, Jolly S. A Meta-Analysis of Randomized Controlled Trials of Conventional Stenting Versus Direct Stenting in Patients with Acute Myocardial Infarction. *J Invasive Cardiol.* 2015;27:405-9.
- Dudek D, Mielecki W, Burzotta F, Gasior M, Witkowski A, Horvath IG, Legutko J, Ochala A, Rubartelli P, Wojdyla RM, Siudak Z, Buchta P, Pregowski J, Aradi D, Machnik A, Hawranek M, Rakowski T, Dziewierz A, Zmudka K. Thrombus aspiration followed by direct stenting: a novel strategy of primary percutaneous coronary intervention in ST-segment elevation myocardial infarction. Results of the Polish-Italian-Hungarian Randomized Thrombectomy Trial (PIHRATE Trial). *Am Heart J.* 2010;160:966-72.
- Mahmoud KD, Jolly SS, James S, Džavik V, Cairns JA, Olivecrona GK, Renlund H, Gao P, Lagerqvist B, Alazzoni A, Kedev S, Stankovic G, Meeks B, Frøbert O, Zijlstra F. Clinical impact of direct stenting and interaction with thrombus aspiration in patients with ST-segment elevation myocardial infarction undergoing percutaneous coronary intervention: Thrombectomy Trialists Collaboration. *Eur Heart J.* 2018;39:2472-9.
- Brener SJ, Cristea E, Lansky AJ, Fahy M, Mehran R, Stone GW. Operator versus core laboratory assessment of angiographic reperfusion markers in patients undergoing primary percutaneous coronary intervention for ST-segment-elevation myocardial infarction. *Circ Cardiovasc Interv.* 2012;5:563-9.
- Ndrepepa G, Tiroch K, Keta D, Fusaro M, Seyfarth M, Pache J, Mehili J, Schomig A, Kastrati A. Predictive factors and impact of no reflow after primary percutaneous coronary intervention in patients with acute myocardial infarction. *Circ Cardiovasc Interv.* 2010;3:27-33.
- Ndrepepa G, Tiroch K, Fusaro M, Keta D, Seyfarth M, Byrne RA, Pache J, Alger P, Mehili J, Schomig A, Kastrati A. 5-year prognostic value of no-reflow phenomenon after percutaneous coronary intervention in patients with acute myocardial infarction. *J Am Coll Cardiol.* 2010;55:2383-9.
- Ertl G, Frantz S. Healing after myocardial infarction. *Cardiovasc Res.* 2005;66:22-32.
- Tasar O, Karabay AK, Oduncu V, Kirma C. Predictors and outcomes of no-reflow phenomenon in patients with acute ST-segment elevation myocardial infarction undergoing primary percutaneous coronary intervention. *Coron Artery Dis.* 2019;30:270-6.
- Barbato E, Marco J, Wijns W. Direct stenting. *Eur Heart J.* 2003;24:394-403.
- Patel VG, Brayton KM, Mintz GS, Maehara A, Banerjee S, Brilakis ES. Intracoronary and noninvasive imaging for prediction of distal embolization and periprocedural myocardial infarction during native coronary artery percutaneous intervention. *Circ Cardiovasc Imaging.* 2013;6:1102-14.
- Johnson TW, Räber L, di Mario C, Bourantas C, Jia H, Mattesini A, Gonzalo N, de la Torre Hernandez JM, Prati F, Koskinas K, Joner M, Radu MD, Erlinge D, Regar E, Kunadian V, Maehara A, Byrne RA, Capodanno D, Akasaka T, Wijns W, Mintz GS, Guagliumi G. Clinical use of intracoronary imaging. Part 2: acute coronary syndromes, ambiguous coronary angiography findings, and guiding interventional decision-making: an expert consensus document of the European Association of Percutaneous Cardiovascular Interventions. *Eur Heart J.* 2019;40:2566-84.

Supplementary data

Supplementary Table 1. Baseline and periprocedural characteristics for the operator-assessed patients.

Supplementary Table 2. Major adverse outcomes according to no-reflow status at 1 year for the operator-assessed patients.

Supplementary Figure 1. Randomised subgroup analysis for no-reflow in the angiographic core laboratory population for the left and right coronary arteries.

Supplementary Figure 2. Covariate balance before and after inverse probability of treatment weighting for the angiographic core laboratory patients.

Supplementary Figure 3. CONSORT diagram for the operator-assessed population according to no-reflow status.

Supplementary Figure 4. Randomised subgroup analysis for no-reflow in the operator-assessed population.

Supplementary Figure 5. Independent predictors of no-reflow in the operator-assessed population.

Supplementary Figure 6. Covariate balance before and after inverse probability of treatment weighting for the operator-assessed patients.

The supplementary data are published online at:

<https://eurointervention.pcronline.com/>

doi/10.4244/EIJ-D-23-00112



Supplementary data

Supplementary Table 1. Baseline and periprocedural characteristics for the operator-assessed patients.

Variable		No-reflow (n = 644)	Reflow (n =9,111)	<i>p-value</i>
Demographic and comorbidities				
Age (years) – mean (SD)		65.02 (12.6)	61.3 (11.8)	<0.01
Female sex – no. (%)		157 (24.4)	2,026 (22.2)	0.23
Hypertension – no. (%)		348 (54.0)	4,544 (49.9)	0.05
Diabetes mellitus – no. (%)		151 (23.4)	1,648 (18.1)	<0.01
Current smoker – no. (%)		230 (35.7)	4,214 (46.3)	<0.01
Previous MI – no. (%)		63 (9.8)	815 (8.9)	0.52
Previous PCI – no. (%)		38 (5.9)	777 (8.5)	0.02
Clinical presentation				
Killip class ≥ 2 – no. (%)		58 (9.0)	351 (3.9)	<0.01
Location of myocardial infarction	Anterior – no. (%)	298 (46.3)	3,752 (41.2)	0.04
	Inferior – no. (%)	322 (50.0)	5,015 (55.0)	
	Lateral or other – no. (%)	54 (8.4)	444 (4.9)	
Presenting heart rate in beats per minute – mean (SD)*		78.0 (19.8)	76.3 (17.2)	0.04
Presenting systolic blood pressure in mmHg – median (IQR)*		133.7 (27.0)	135.2 (26.5)	0.16
Presenting diastolic blood pressure in mmHg – median (IQR)*		81.1 (16.5)	82.2 (16.6)	0.12
Periprocedural medication use – no. (%)				
Unfractionated heparin		474 (73.6)	6,908 (75.8)	0.22
Bivalirudin		131 (20.3)	1,476 (16.2)	<0.01
Low molecular weight heparin		175 (27.1)	2,499 (27.4)	0.92
Intracoronary vasodilator				
Upfront		87 (13.5)	708 (7.8)	<0.01
Bailout		108 (16.8)	236 (2.6)	<0.01
Glycoprotein IIb/IIIa inhibitor				
Upfront		169 (26.3)	2,186 (24.0)	0.20
Bailout		157 (24.5)	1,329 (14.6)	<0.01
Intracoronary bolus ¹		126 (38.7)	1,329 (37.8)	0.76
Initial thrombus grade – no. (%)				
0: no thrombus present		49 (7.6)	721 (7.9)	<0.01

1: possible thrombus present	44 (6.8)	1,012 (11.1)	
2: definite thrombus present, < 0.5x vessel diameter	30 (4.7)	413 (4.5)	
3: definite thrombus present, 0.5 – 2.0x vessel diameter	31 (4.8)	778 (8.5)	
4: definite thrombus present, >2.0x vessel diameter	50 (7.8)	868 (9.5)	
5: Total occlusion	438 (68.0)	5295 (58.1)	
Missing data	2 (0.3)	24 (0.3)	
TIMI flow before PCI – no. (%)			
TIMI flow 0	482 (74.8)	6038 (66.3)	<0.01
TIMI flow 1	74 (11.5)	666 (7.3)	
TIMI flow 2	60 (9.3)	1126 (12.4)	
TIMI flow 3	24 (3.7)	1257 (13.8)	
Missing data	4 (0.6)	24 (0.3)	
Thrombectomy – no. (%)	350 (54.4)	4716 (51.8)	0.22
Use of stenting			
Stenting* – no. (%)	509 (79.0)	8802 (96.6)	<0.01
Direct stenting – no. (%) ²	130 (25.5)	2801 (31.8)	<0.01
Stenting with DES – no. (%) ²	266 (52.3)	4848 (55.1)	0.21
Median PCI procedure time (mins) – median (IQR)	49 (35 – 67)	36 (27 – 50)	<0.01

DES, Drug-eluting stent; IQR, Interquartile range; MI, Myocardial infarction PCI, Percutaneous coronary intervention; SD, standard deviation; TIMI, Thrombolysis in myocardial infarction

¹ The denominator is based on the number of patients who received a glycoprotein IIb/IIIa inhibitor

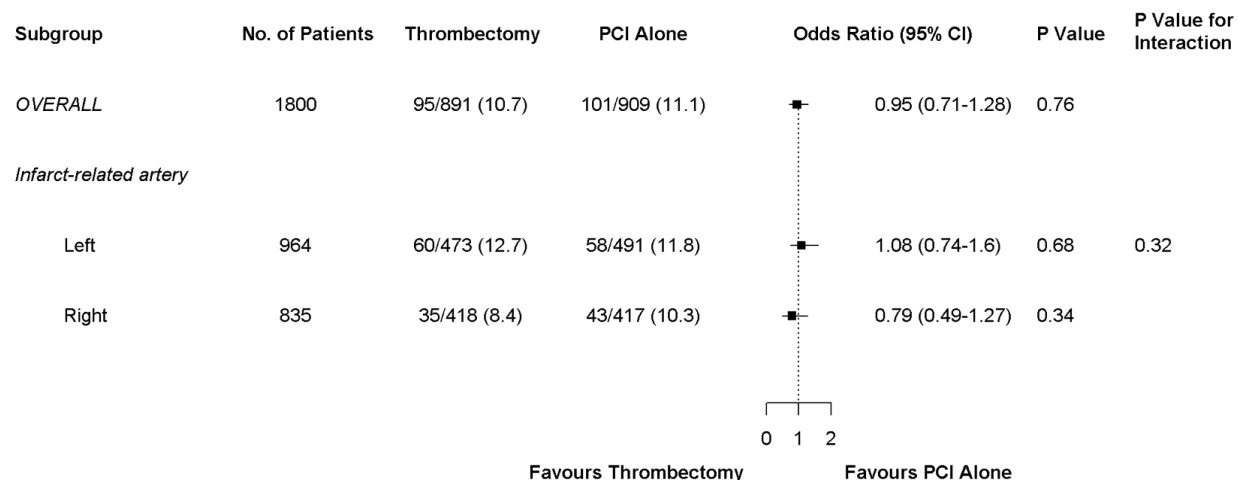
² The denominator is based on the number of patients who received a stent

* Less than 1% missing data

Supplementary Table 2. Major adverse outcomes according to no-reflow status at 1 year for the operator-assessed patients.

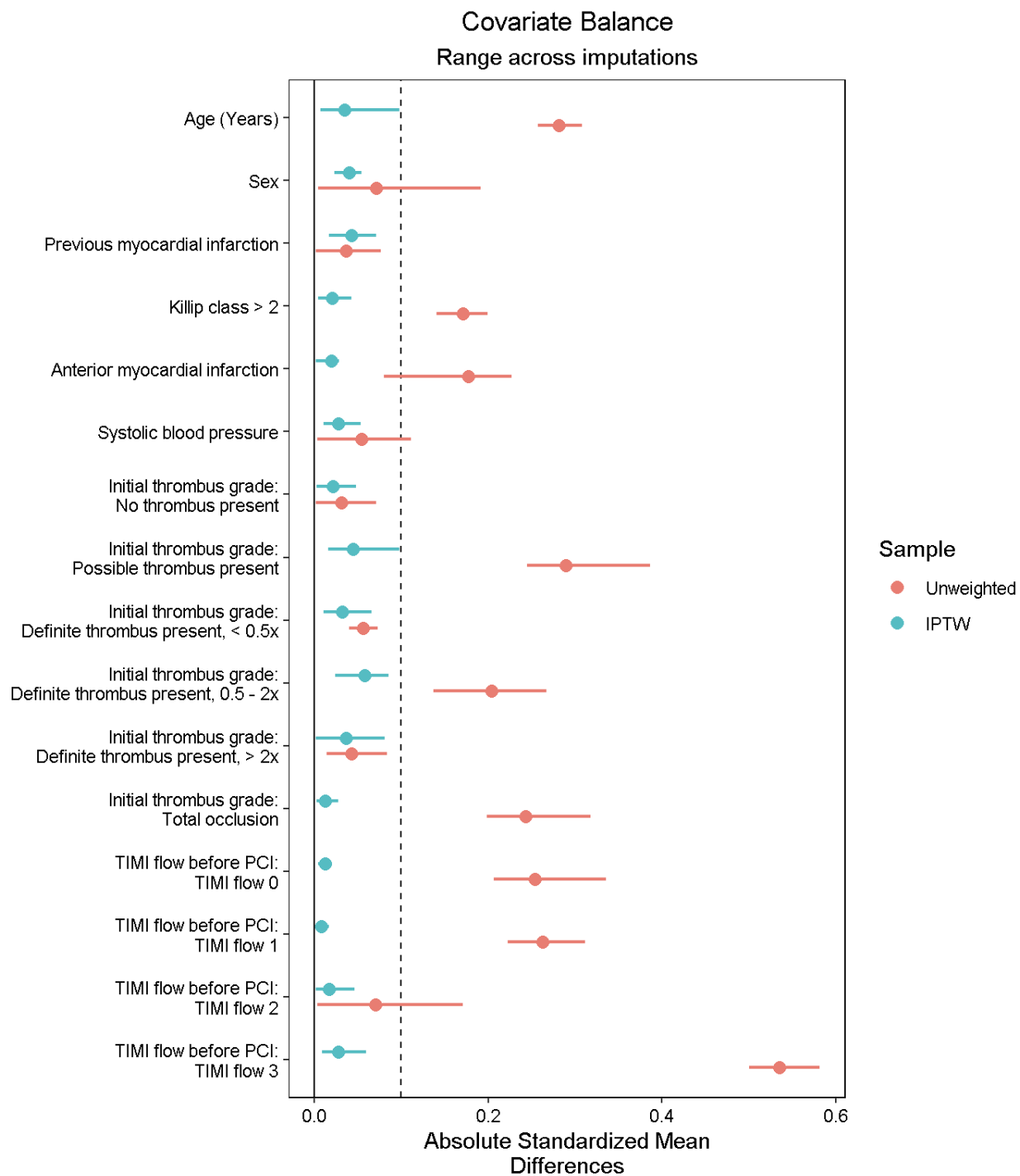
Variables	No-reflow (n = 644)	Reflow (n =9,111)	Unadjusted HR (95% CI)	Adjusted HR (95% CI)	p-value
Primary composite outcome					
Cardiovascular death, recurrent myocardial infarction, cardiogenic shock, or NYHA class IV heart failure – no. (%)	104 (16.1)	679 (7.5)	2.32 (1.89, 2.86)	1.73 (1.33, 2.25)	<0.0001
Other outcomes					
All-cause mortality – no. (%)	79 (12.3)	335 (3.7)	3.55 (2.78, 4.54)	2.39 (1.73, 3.3)	<0.0001
Cardiovascular mortality – no. (%)	72 (11.2)	274 (3.0)	3.94 (3.04, 5.11)	2.60 (1.85, 3.66)	<0.0001
Recurrent myocardial infarction – no. (%)	17 (2.6)	249 (2.7)	1.02 (0.63, 1.68)	0.86 (0.48, 1.54)	0.61
NYHA Class IV heart failure – no. (%)	20 (3.1)	190 (2.1)	1.57 (0.99, 2.49)	1.20 (0.72, 1.99)	0.49
Cardiogenic shock – no. (%)	44 (6.8)	174 (1.9)	3.73 (2.68, 5.19)	2.41 (1.68, 3.46)	<0.0001
All-cause rehospitalization – no. (%)	11 (1.7)	225 (2.4)	0.75 (0.41, 1.37)	0.54 (0.28, 1.04)	0.06
Stent thrombosis – no. (%)	10 (1.6)	176 (1.9)	0.85 (0.45, 1.60)	0.72 (0.36, 1.44)	0.36

CI, Confidence interval; HR, Hazard ratio; NYHA, New York Heart Association

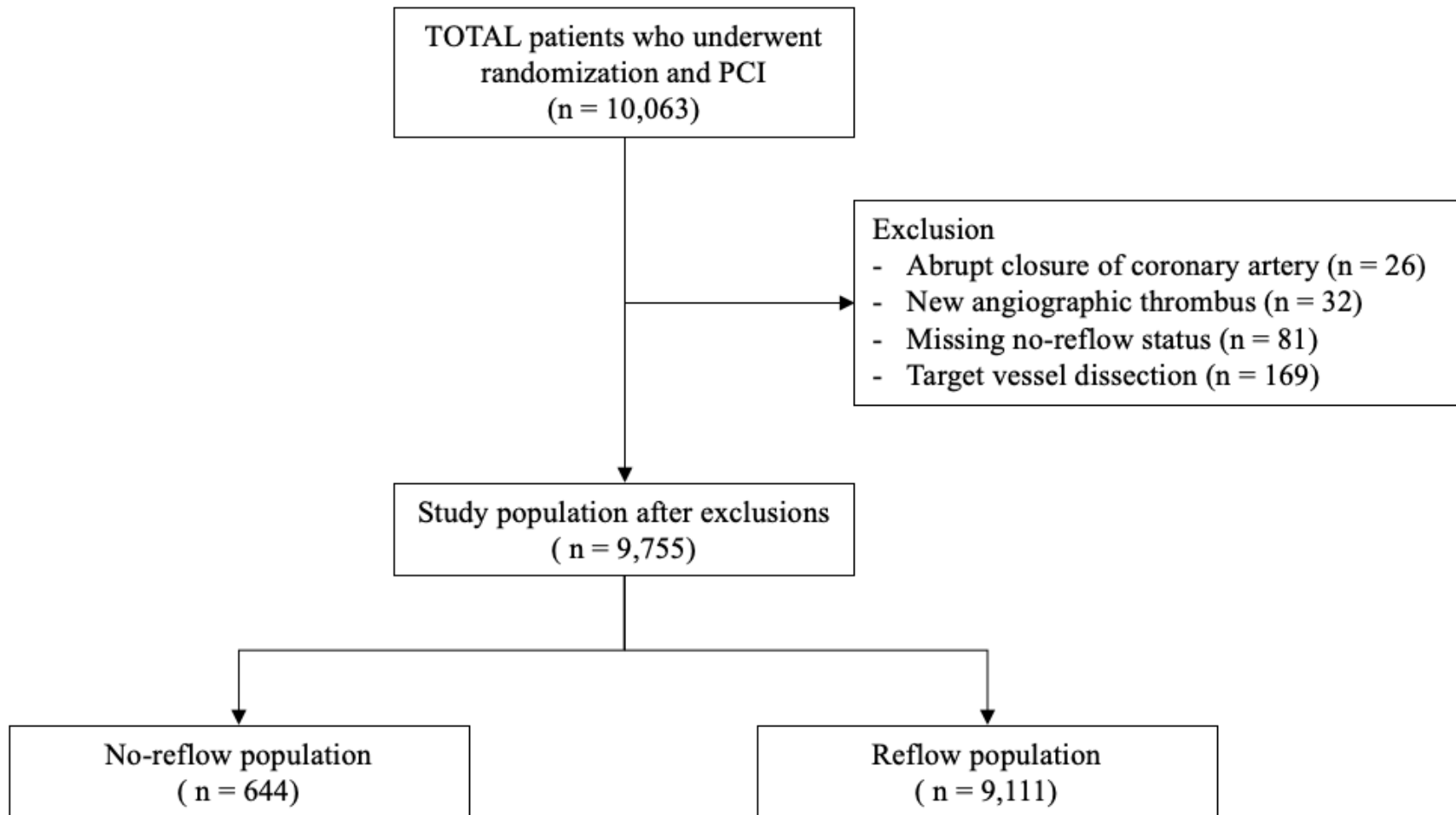


Supplementary Figure 1. Randomised subgroup analysis for no-reflow in the angiographic core laboratory population for the left and right coronary arteries.

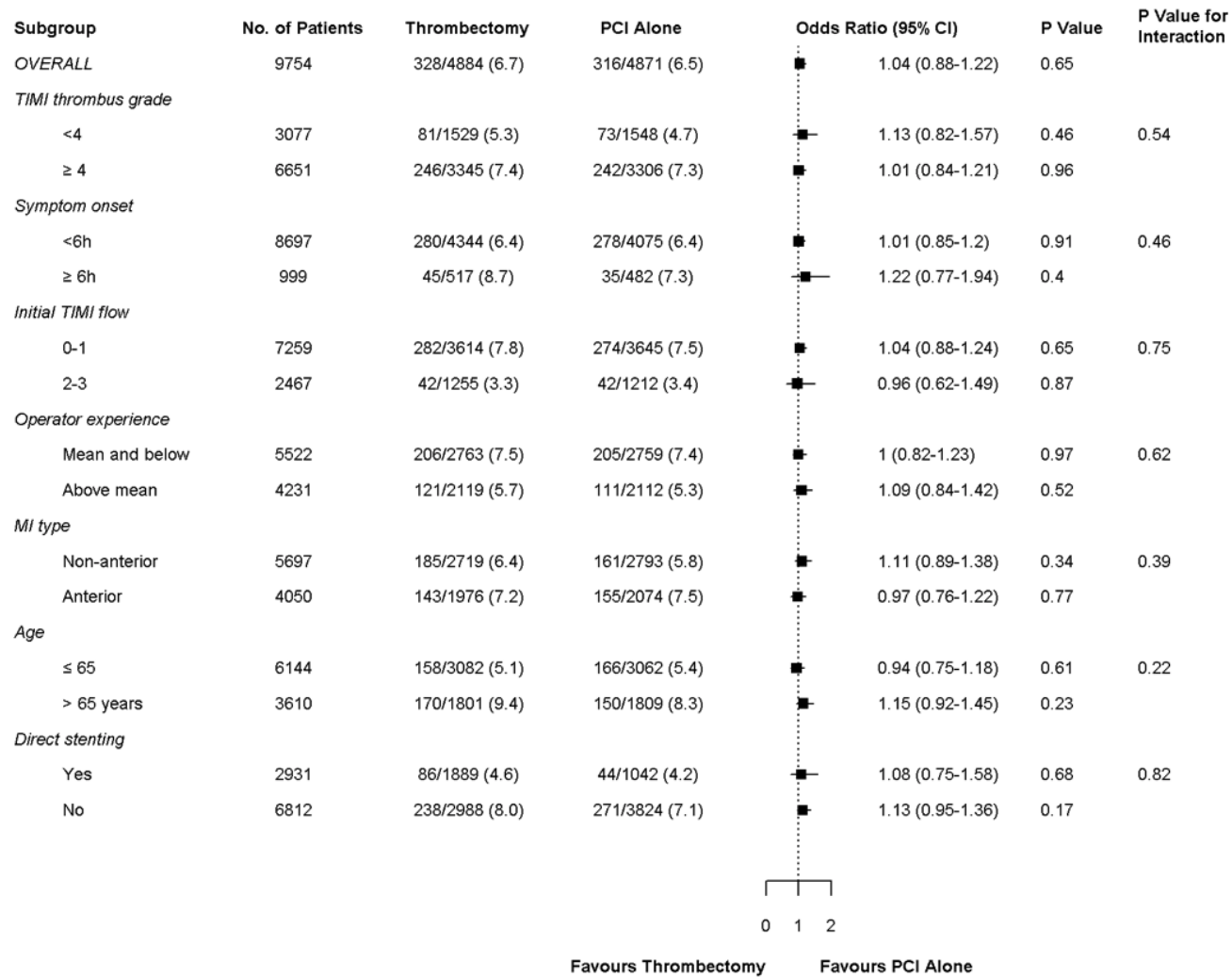
CI, confidence intervals; PCI, percutaneous coronary intervention.



Supplementary Figure 2. Covariate balance before and after inverse probability of treatment weighting for the angiographic core laboratory patients.

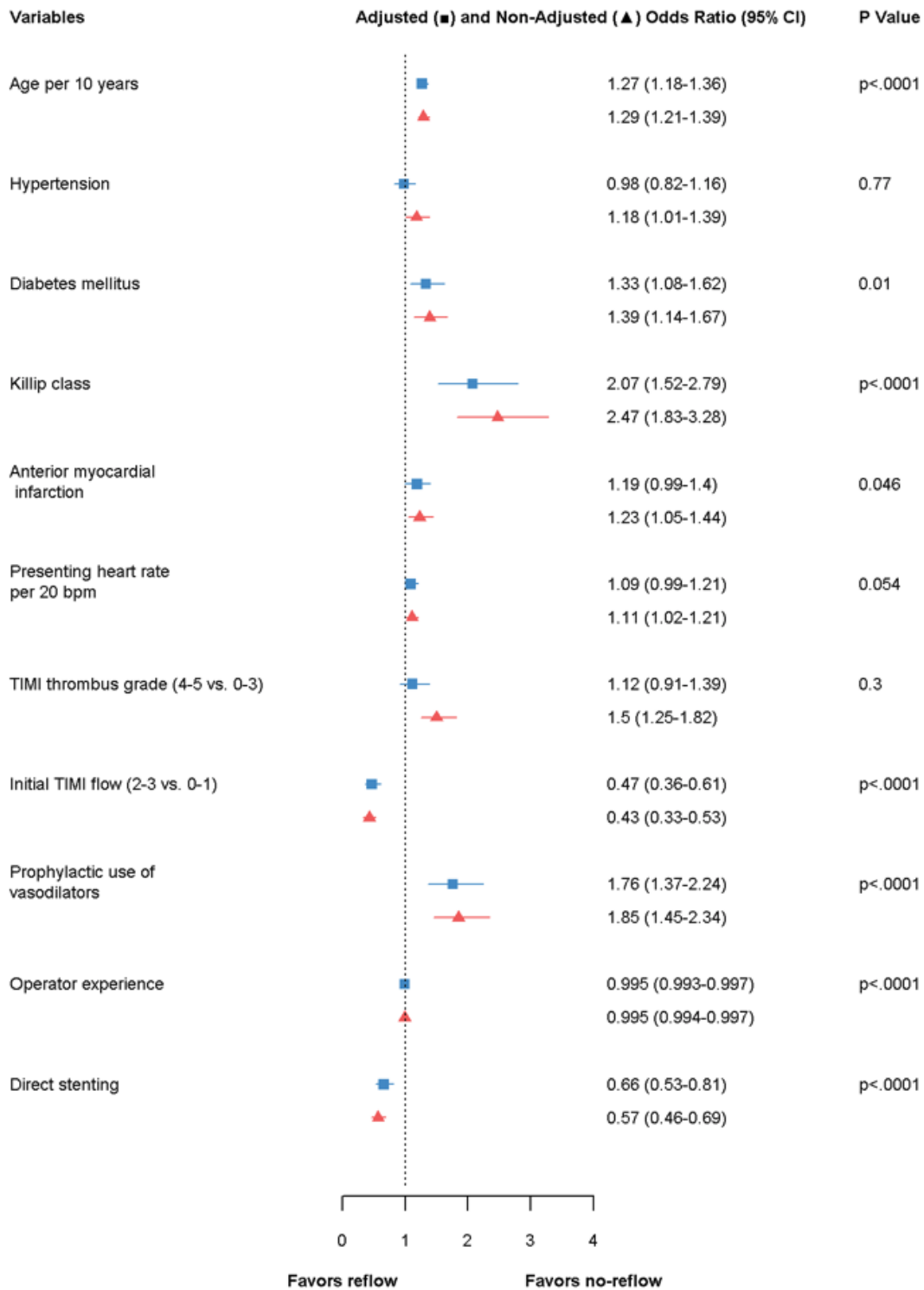


Supplementary Figure 3. CONSORT diagram for the operator-assessed population according to no-reflow status.



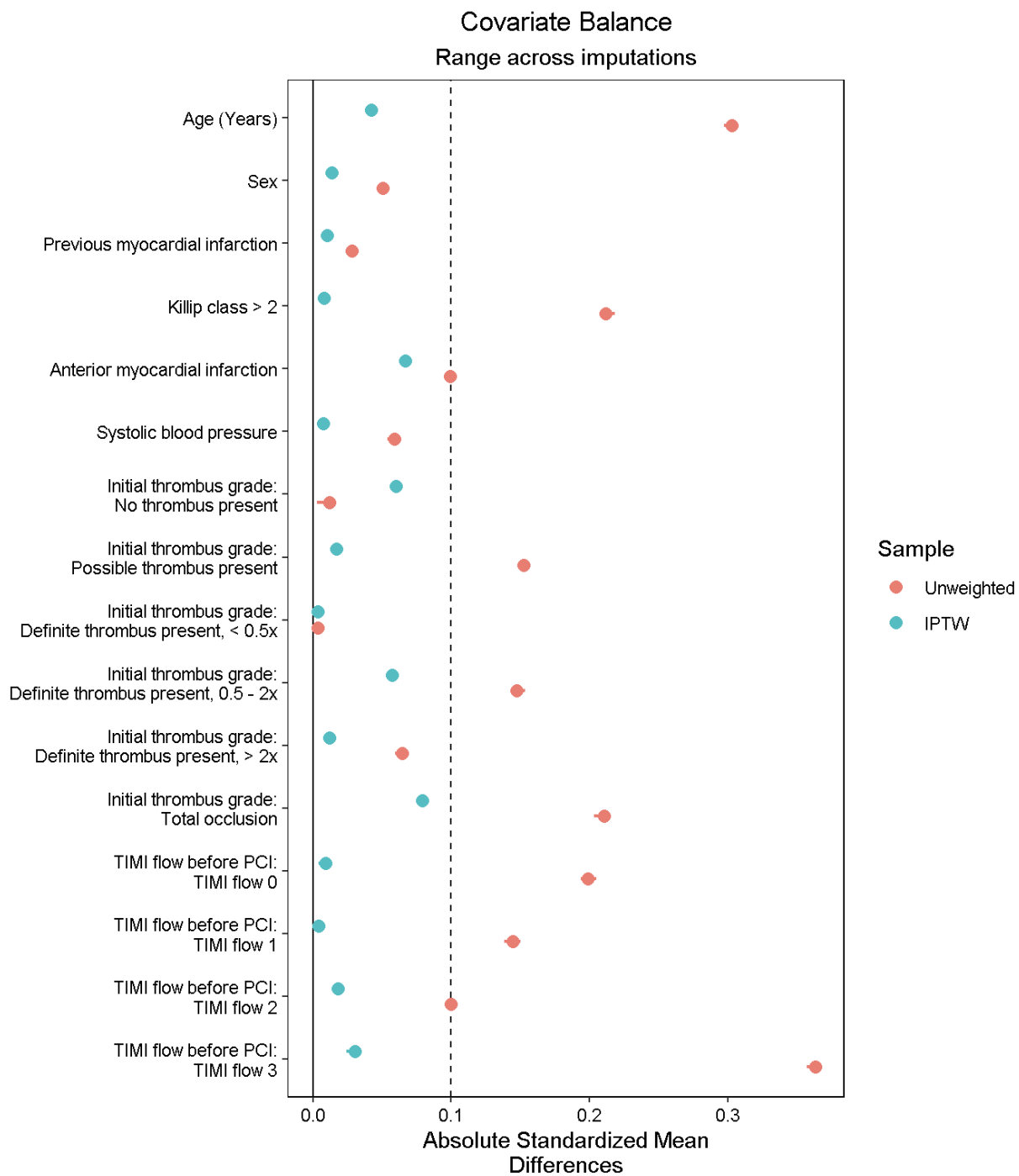
Supplementary Figure 4. Randomised subgroup analysis for no-reflow in the operator-assessed population.

CI, confidence intervals; PCI, percutaneous coronary intervention; TIMI, Thrombolysis in Myocardial Infarction.



Supplementary Figure 5. Independent predictors of no-reflow in the operator-assessed population.

TIMI, Thrombolysis in Myocardial Infarction.



Supplementary Figure 6. Covariate balance before and after inverse probability of treatment weighting for the operator-assessed patients.